




Product datasheet

Anti-SLC23A2 antibody ab229802

1 References 3 Images

Overview

Product name	Anti-SLC23A2 antibody
Description	Rabbit polyclonal to SLC23A2
Host species	Rabbit
Tested applications	Suitable for: IHC-P, WB
Species reactivity	<p>Reacts with: Human</p> <p>Predicted to work with: Mouse, Rat </p>
Immunogen	<p>Recombinant fragment corresponding to Human SLC23A2 aa 1-90. Sequence:</p> <p>MMGIGKNTTSKSMEAGSSTEGKYEDEAKHPAFFTLPVVIN GGATSSGEQD NEDTELMAYTTENGLAEKSSLAETLDSTGSLDPQRSDMI</p> <p>Database link: Q9UGH3</p> <p style="text-align: right;">  Run BLAST with  Run BLAST with </p>
Positive control	WB: SH-SY5Y and A-375 whole cell lysates. IHC-P: Human tonsil and rectum tissue.
General notes	<p>Reproducibility is key to advancing scientific discovery and accelerating scientists' next breakthrough.</p> <p>Abcam is leading the way with our range of recombinant antibodies, knockout-validated antibodies and knockout cell lines, all of which support improved reproducibility.</p> <p>We are also planning to innovate the way in which we present recommended applications and species on our product datasheets, so that only applications & species that have been tested in our own labs, our suppliers or by selected trusted collaborators are covered by our Abpromise™ guarantee.</p> <p>In preparation for this, we have started to update the applications & species that this product is Abpromise guaranteed for.</p> <p>We are also updating the applications & species that this product has been “predicted to work with,” however this information is not covered by our Abpromise guarantee.</p> <p>Applications & species from publications and Abreviews that have not been tested in our own labs or in those of our suppliers are not covered by the Abpromise guarantee.</p> <p>Please check that this product meets your needs before purchasing. If you have any questions, special requirements or concerns, please send us an inquiry and/or contact our Support team ahead of purchase. Recommended alternatives for this product can be found below, as well as</p>

customer reviews and Q&As.

Properties

Form	Liquid
Storage instructions	Shipped at 4°C. Store at +4°C short term (1-2 weeks). Upon delivery aliquot. Store at -20°C long term. Avoid freeze / thaw cycle.
Storage buffer	pH: 7.30 Preservative: 0.02% Sodium azide Constituents: PBS, 50% Glycerol
Purity	Immunogen affinity purified
Clonality	Polyclonal
Isotype	IgG

Applications

Our [Abpromise guarantee](#) covers the use of **ab229802** in the following tested applications.

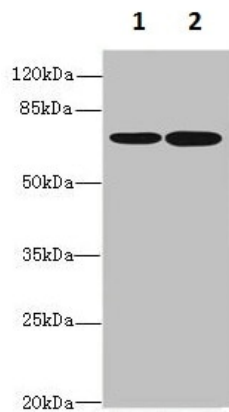
The application notes include recommended starting dilutions; optimal dilutions/concentrations should be determined by the end user.

Application	Abreviews	Notes
IHC-P		1/20 - 1/200.
WB		1/1000 - 1/5000. Detects a band of approximately 70 kDa (predicted molecular weight: 70 kDa).

Target

Relevance	Sodium/ascorbate cotransporter. Mediates electrogenic uptake of vitamin C, with a stoichiometry of 2 Na(+) for each ascorbate.
Cellular localization	Membrane; multi-pass membrane protein.

Images



Western blot - Anti-SLC23A2 antibody (ab229802)

All lanes : Anti-SLC23A2 antibody (ab229802) at 1/1000 dilution

Lane 1 : SH-SY5Y (human neuroblastoma cell line from bone marrow) whole cell lysate

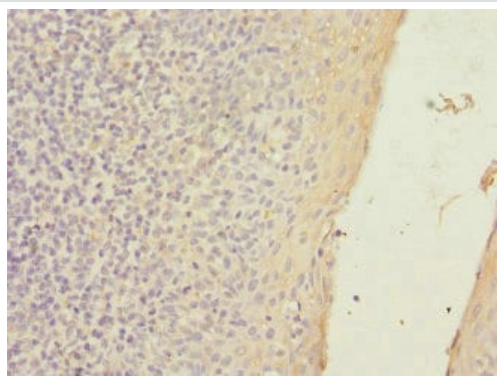
Lane 2 : A-375 (human malignant melanoma cell line) whole cell lysate

Secondary

All lanes : Goat polyclonal to Rabbit IgG at 1/10000 dilution

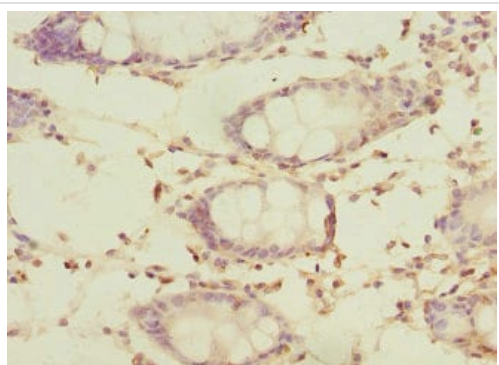
Predicted band size: 70 kDa

Observed band size: 70 kDa



Immunohistochemistry (Formalin/PFA-fixed paraffin-embedded sections) - Anti-SLC23A2 antibody (ab229802)

Paraffin-embedded human tonsil tissue stained for SLC23A2 using ab229802 at 1/100 dilution in immunohistochemical analysis.



Paraffin-embedded human rectum tissue stained for SLC23A2 using ab229802 at 1/100 dilution in immunohistochemical analysis.

Immunohistochemistry (Formalin/PFA-fixed paraffin-embedded sections) - Anti-SLC23A2 antibody (ab229802)

Please note: All products are "FOR RESEARCH USE ONLY. NOT FOR USE IN DIAGNOSTIC PROCEDURES"

Our Abpromise to you: Quality guaranteed and expert technical support

- Replacement or refund for products not performing as stated on the datasheet
- Valid for 12 months from date of delivery
- Response to your inquiry within 24 hours
- We provide support in Chinese, English, French, German, Japanese and Spanish
- Extensive multi-media technical resources to help you
- We investigate all quality concerns to ensure our products perform to the highest standards

If the product does not perform as described on this datasheet, we will offer a refund or replacement. For full details of the Abpromise, please visit <https://www.abcam.com/abpromise> or contact our technical team.

Terms and conditions

- Guarantee only valid for products bought direct from Abcam or one of our authorized distributors