

Product datasheet

Anti-SLC25A12 antibody ab234975

3 Images

Overview

Product name	Anti-SLC25A12 antibody
Description	Rabbit polyclonal to SLC25A12
Host species	Rabbit
Tested applications	Suitable for: IHC-P, WB
Species reactivity	Reacts with: Mouse, Rat, Human
Immunogen	Recombinant fragment corresponding to Human SLC25A12 aa 202-317. Database link: O75746
Positive control	WB: HEK-293 whole cell lysate. Mouse and rat heart and kidney tissue lysates. IHC-P: Human pancreatic cancer and brain tissues.

Properties

Form	Liquid
Storage instructions	Shipped at 4°C. Store at +4°C short term (1-2 weeks). Upon delivery aliquot. Store at -20°C long term. Avoid freeze / thaw cycle.
Storage buffer	pH: 7.40 Preservative: 0.03% Proclin Constituents: 50% Glycerol, PBS
Purity	Protein G purified
Purification notes	Purity >95%.
Clonality	Polyclonal
Isotype	IgG

Applications

Our [Abpromise guarantee](#) covers the use of **ab234975** in the following tested applications.

The application notes include recommended starting dilutions; optimal dilutions/concentrations should be determined by the end user.

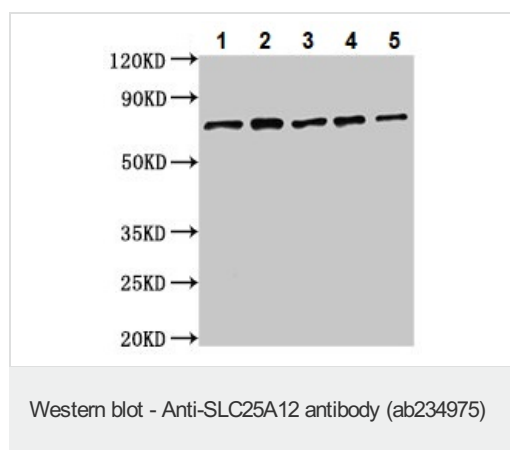
Application	Abreviews	Notes
IHC-P		1/20 - 1/200.

Application	Abreviews	Notes
WB		1/500 - 1/5000. Predicted molecular weight: 74 kDa.

Target

Function	Calcium-dependent mitochondrial aspartate and glutamate carrier. May have a function in the urea cycle.
Tissue specificity	High levels in heart and skeletal muscle, low in brain and very low in kidney.
Involvement in disease	Defects in SLC25A12 are the cause of aspartate-glutamate carrier 1 deficiency (AGC1D) [MIM:612949]; also called global cerebral hypomyelination. This syndrome consists of a child severe psychomotor retardation, hypotonia and hypomyelination of the central nervous system.
Sequence similarities	Belongs to the mitochondrial carrier family. Contains 4 EF-hand domains. Contains 3 Solcar repeats.
Cellular localization	Mitochondrion inner membrane.

Images



All lanes : Anti-SLC25A12 antibody (ab234975) at 1/500 dilution

Lane 1 : HEK-293 (Human epithelial cell line from embryonic kidney) whole cell lysate

Lane 2 : Rat heart tissue lysate

Lane 3 : Rat kidney tissue lysate

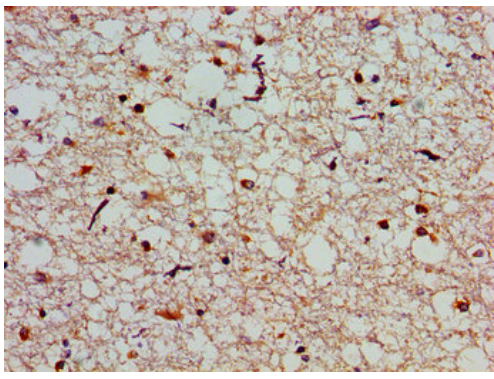
Lane 4 : Mouse kidney tissue lysate

Lane 5 : Mouse heart tissue lysate

Secondary

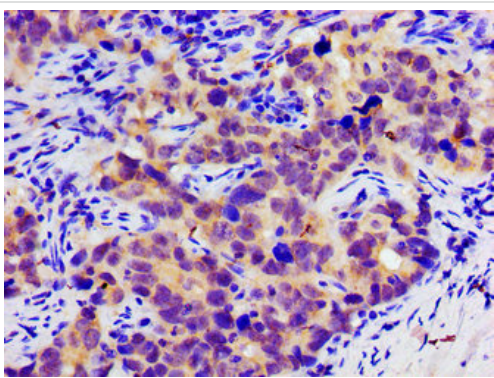
All lanes : Goat polyclonal to rabbit IgG at 1/50000 dilution

Predicted band size: 74 kDa



Immunohistochemistry (Formalin/PFA-fixed paraffin-embedded sections) - Anti-SLC25A12 antibody (ab234975)

Paraffin-embedded human brain tissue stained for SLC25A12 with ab234975 at 1/100 dilution in immunohistochemical analysis.



Immunohistochemistry (Formalin/PFA-fixed paraffin-embedded sections) - Anti-SLC25A12 antibody (ab234975)

Paraffin-embedded human pancreatic cancer tissue stained for SLC25A12 with ab234975 at 1/100 dilution in immunohistochemical analysis.

Please note: All products are "FOR RESEARCH USE ONLY. NOT FOR USE IN DIAGNOSTIC PROCEDURES"

Our Abpromise to you: Quality guaranteed and expert technical support

- Replacement or refund for products not performing as stated on the datasheet
- Valid for 12 months from date of delivery
- Response to your inquiry within 24 hours
- We provide support in Chinese, English, French, German, Japanese and Spanish
- Extensive multi-media technical resources to help you
- We investigate all quality concerns to ensure our products perform to the highest standards

If the product does not perform as described on this datasheet, we will offer a refund or replacement. For full details of the Abpromise, please visit <https://www.abcam.com/abpromise> or contact our technical team.

Terms and conditions

- Guarantee only valid for products bought direct from Abcam or one of our authorized distributors