

## Product datasheet

# Anti-SLC25A3/PHC antibody ab89117

3 Images

### Overview

---

<b>Product name</b>	Anti-SLC25A3/PHC antibody
<b>Description</b>	Mouse polyclonal to SLC25A3/PHC
<b>Host species</b>	Mouse
<b>Tested applications</b>	<b>Suitable for:</b> WB, ICC/IF
<b>Species reactivity</b>	<b>Reacts with:</b> Human
<b>Immunogen</b>	Full length protein corresponding to Human SLC25A3/PHC. Database link: <a href="#">NP_002626.1</a>
<b>Positive control</b>	Human pancreas tissue lysate, SLC25A3/PHC transfected 293T cell line lysate and HeLa cells.
<b>General notes</b>	This product was previously labelled as SLC25A3

Reproducibility is key to advancing scientific discovery and accelerating scientists' next breakthrough.

Abcam is leading the way with our range of recombinant antibodies, knockout-validated antibodies and knockout cell lines, all of which support improved reproducibility.

We are also planning to innovate the way in which we present recommended applications and species on our product datasheets, so that only applications & species that have been tested in our own labs, our suppliers or by selected trusted collaborators are covered by our Abpromise™ guarantee.

In preparation for this, we have started to update the applications & species that this product is Abpromise guaranteed for.

We are also updating the applications & species that this product has been "predicted to work with," however this information is not covered by our Abpromise guarantee.

Applications & species from publications and Abreviews that have not been tested in our own labs or in those of our suppliers are not covered by the Abpromise guarantee.

Please check that this product meets your needs before purchasing. If you have any questions, special requirements or concerns, please send us an inquiry and/or contact our Support team ahead of purchase. Recommended alternatives for this product can be found below, as well as customer reviews and Q&As.

### Properties

---

<b>Form</b>	Liquid
<b>Storage instructions</b>	Shipped at 4°C. Upon delivery aliquot and store at -20°C or -80°C. Avoid repeated freeze / thaw cycles.
<b>Storage buffer</b>	pH: 7.4 Constituent: 2.68% PBS
<b>Purity</b>	Protein A purified
<b>Clonality</b>	Polyclonal
<b>Isotype</b>	IgG

## Applications

Our [Abpromise guarantee](#) covers the use of **ab89117** in the following tested applications.

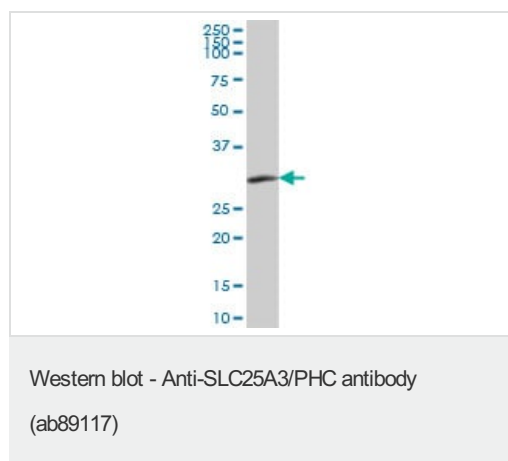
The application notes include recommended starting dilutions; optimal dilutions/concentrations should be determined by the end user.

Application	Abreviews	Notes
WB		Use a concentration of 1 µg/ml. Predicted molecular weight: 40 kDa.
ICC/IF		Use a concentration of 10 µg/ml.

## Target

<b>Function</b>	Transport of phosphate groups from the cytosol to the mitochondrial matrix. Phosphate is cotransported with H(+).
<b>Involvement in disease</b>	Defects in SLC25A3 are a cause of mitochondrial phosphate carrier deficiency (MPCD) [MIM:610773]. MPCD is a fatal disorder of oxidative phosphorylation. Patients have lactic acidosis, hypertrophic cardiomyopathy and muscular hypotonia and die within the first year of life.
<b>Sequence similarities</b>	Belongs to the mitochondrial carrier family. Contains 3 Solcar repeats.
<b>Cellular localization</b>	Mitochondrion inner membrane.

## Images

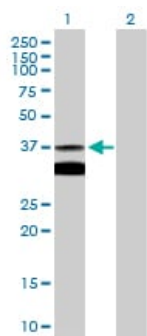


Anti-SLC25A3/PHC antibody (ab89117) at 1 µg/ml + Human pancreas tissue lysate at 50 µg

**Predicted band size:** 40 kDa

**Observed band size:** 30 kDa

[why is the actual band size different from the predicted?](#)



Western blot - Anti-SLC25A3/PHC antibody (ab89117)

**All lanes :** Anti-SLC25A3/PHC antibody (ab89117) at 1 µg/ml

**Lane 1 :** SLC25A3/PHC transfected 293T cell line lysate

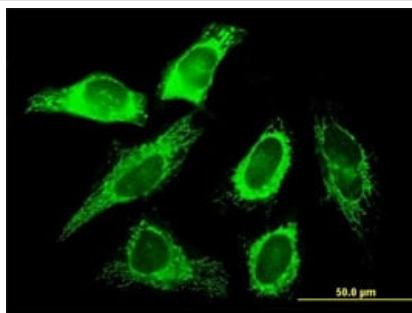
**Lane 2 :** Non-transfected lysate

Lysates/proteins at 25 µg per lane.

**Predicted band size:** 40 kDa

**Observed band size:** 37 kDa [why is the actual band size different from the predicted?](#)

**Additional bands at:** 30 kDa. We are unsure as to the identity of these extra bands.



Immunocytochemistry/ Immunofluorescence - Anti-SLC25A3/PHC antibody (ab89117)

ab89117, at 10 µg/ml staining SLC25A3/PHC in HeLa cells by Immunofluorescence.

**Please note:** All products are "FOR RESEARCH USE ONLY. NOT FOR USE IN DIAGNOSTIC PROCEDURES"

### Our Abpromise to you: Quality guaranteed and expert technical support

- Replacement or refund for products not performing as stated on the datasheet
- Valid for 12 months from date of delivery
- Response to your inquiry within 24 hours
- We provide support in Chinese, English, French, German, Japanese and Spanish
- Extensive multi-media technical resources to help you
- We investigate all quality concerns to ensure our products perform to the highest standards

If the product does not perform as described on this datasheet, we will offer a refund or replacement. For full details of the Abpromise, please visit <https://www.abcam.com/abpromise> or contact our technical team.

### Terms and conditions

- Guarantee only valid for products bought direct from Abcam or one of our authorized distributors