




Product datasheet

Anti-SLC25A46/TB1 antibody ab222197

2 Images

Overview

Product name	Anti-SLC25A46/TB1 antibody
Description	Rabbit polyclonal to SLC25A46/TB1
Host species	Rabbit
Tested applications	Suitable for: WB, IHC-P
Species reactivity	Reacts with: Human Predicted to work with: Mouse, Rat 
Immunogen	Recombinant fragment corresponding to Human SLC25A46/TB1 aa 290-362. Sequence: LKRKTYNSHLAESTSPVQSMLDAYFPELIANFAASLCS DVILYPLETVLH RLHIQGTRTIIDNTDLGYEVLPI Database link: Q96AG3  Run BLAST with  Run BLAST with
Positive control	IHC-P: Human colon tissue. WB: RT4 cell lysate.
General notes	This product was previously labelled as SLC25A46

Properties

Form	Liquid
Storage instructions	Shipped at 4°C. Store at +4°C short term (1-2 weeks). Upon delivery aliquot. Store at -20°C long term. Avoid freeze / thaw cycle.
Storage buffer	pH: 7.20 Preservative: 0.02% Sodium azide Constituents: 40% Glycerol, PBS
Purity	Immunogen affinity purified
Clonality	Polyclonal
Isotype	IgG

Applications

Applications

Our [Abpromise guarantee](#) covers the use of **ab222197** in the following tested applications.

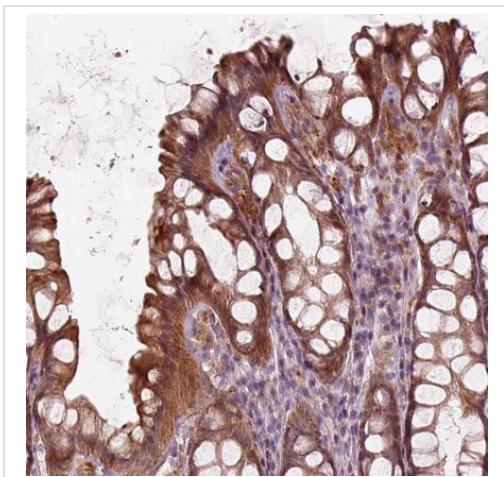
The application notes include recommended starting dilutions; optimal dilutions/concentrations should be determined by the end user.

Application	Abreviews	Notes
WB		1/100 - 1/250. Predicted molecular weight: 46 kDa.
IHC-P		1/50 - 1/200. Perform heat mediated antigen retrieval with citrate buffer pH 6 before commencing with IHC staining protocol.

Target

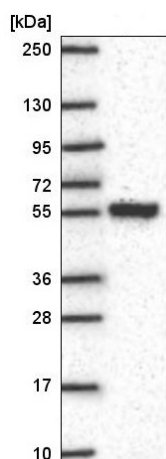
Sequence similarities	Belongs to the mitochondrial carrier family. Contains 2 Solcar repeats.
Cellular localization	Mitochondrion inner membrane.

Images



Paraffin-embedded human colon tissue stained for SLC25A46/TB1 using ab222197 at a 1/50 dilution in immunohistochemical analysis.

Immunohistochemistry (Formalin/PFA-fixed paraffin-embedded sections) - Anti-SLC25A46/TB1 antibody (ab222197)



Anti-SLC25A46/TB1 antibody (ab222197) at 1/100 dilution + RT4
(human urinary bladder cancer cell line) cell lysate

Predicted band size: 46 kDa

Western blot - Anti-SLC25A46/TB1 antibody
(ab222197)

Please note: All products are "FOR RESEARCH USE ONLY. NOT FOR USE IN DIAGNOSTIC PROCEDURES"

Our Abpromise to you: Quality guaranteed and expert technical support

- Replacement or refund for products not performing as stated on the datasheet
- Valid for 12 months from date of delivery
- Response to your inquiry within 24 hours

- We provide support in Chinese, English, French, German, Japanese and Spanish
- Extensive multi-media technical resources to help you
- We investigate all quality concerns to ensure our products perform to the highest standards

If the product does not perform as described on this datasheet, we will offer a refund or replacement. For full details of the Abpromise, please visit <https://www.abcam.com/abpromise> or contact our technical team.

Terms and conditions

- Guarantee only valid for products bought direct from Abcam or one of our authorized distributors