

Product datasheet

Anti-SLC35E2B antibody ab150933

1 Image

Overview

Product name	Anti-SLC35E2B antibody
Description	Rabbit polyclonal to SLC35E2B
Host species	Rabbit

Tested Applications & Species

Application	Species
IHC-P	Human

[See all applications and species data](#) ↓

Immunogen	Recombinant fragment, corresponding to amino acids 369-401 of Human SLC35E2B (UniProt: P0CK96). Run BLAST with ExPASy Run BLAST with NCBI
Positive control	Human kidney tissue.
General notes	The antibody solution should be gently mixed before use.

Properties


Form	Liquid
Storage instructions	Shipped at 4°C. Upon delivery aliquot and store at -20°C. Avoid repeated freeze / thaw cycles.
Storage buffer	pH: 7.20 Preservative: 0.02% Sodium azide Constituents: 40% Glycerol (glycerin, glycerine), 59% PBS
Purity	Immunogen affinity purified
Clonality	Polyclonal
Isotype	IgG

Applications

The Abpromise guarantee Our [Abpromise guarantee](#) covers the use of **ab150933** in the following tested applications.

The application notes include recommended starting dilutions; optimal dilutions/concentrations should be determined by the end user.

 Guaranteed Tested applications are guaranteed to work and covered by our Abpromise guarantee.	 Predicted Predicted to work for this combination of applications and species but not guaranteed.	 Incompatible Does not work for this combination of applications and species.
--	--	--

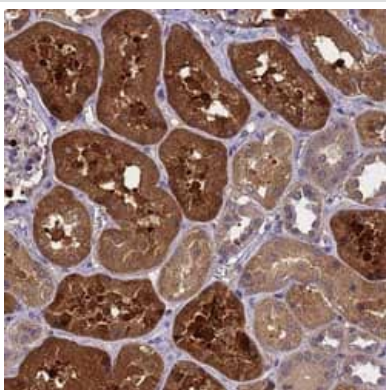
Application	Species
IHC-P	 Human

Application	Abreviews	Notes
IHC-P		1/20 - 1/50. Perform heat mediated antigen retrieval with citrate buffer pH 6 before commencing with IHC staining protocol.

Target

Function	Putative transporter.
Sequence similarities	Belongs to the TPT transporter family. SLC35E subfamily.
Cellular localization	Membrane.

Images



Immunohistochemical analysis of paraffin-embedded Human kidney tissue labeling SLC35E2B with ab150933 at 1/20 dilution.

Immunohistochemistry (Formalin/PFA-fixed paraffin-embedded sections) - Anti-SLC35E2B antibody (ab150933)

Please note: All products are "FOR RESEARCH USE ONLY. NOT FOR USE IN DIAGNOSTIC PROCEDURES"

Our Abpromise to you: Quality guaranteed and expert technical support

- Replacement or refund for products not performing as stated on the datasheet

- Valid for 12 months from date of delivery
- Response to your inquiry within 24 hours

- We provide support in Chinese, English, French, German, Japanese and Spanish
- Extensive multi-media technical resources to help you
- We investigate all quality concerns to ensure our products perform to the highest standards

If the product does not perform as described on this datasheet, we will offer a refund or replacement. For full details of the Abpromise, please visit <https://www.abcam.com/abpromise> or contact our technical team.

Terms and conditions

- Guarantee only valid for products bought direct from Abcam or one of our authorized distributors