

Product datasheet

Anti-SLC3A1 antibody ab196552

[1 References](#) [2 Images](#)

Overview

Product name	Anti-SLC3A1 antibody
Description	Rabbit polyclonal to SLC3A1
Host species	Rabbit
Tested applications	Suitable for: IHC-P, WB, ICC/IF
Species reactivity	Reacts with: Mouse, Rat, Human
Immunogen	Recombinant fragment corresponding to Human SLC3A1 (C terminal). Database link: Q07837
Positive control	HT-29, HepG2, 293T, BXPc-3, PC12 and mouse liver lysates. HeLa cells.

Properties

Form	Liquid
Storage instructions	Shipped at 4°C. Store at +4°C short term (1-2 weeks). Upon delivery aliquot. Store at -20°C long term. Avoid freeze / thaw cycle.
Storage buffer	pH: 7.4 Preservative: 0.02% Sodium azide Constituents: 49% PBS, 0.87% Sodium chloride, 50% Glycerol PBS is without Mg ²⁺ and Ca ²⁺
Purity	Immunogen affinity purified
Clonality	Polyclonal
Isotype	IgG

Applications

Our [Abpromise guarantee](#) covers the use of **ab196552** in the following tested applications.

The application notes include recommended starting dilutions; optimal dilutions/concentrations should be determined by the end user.

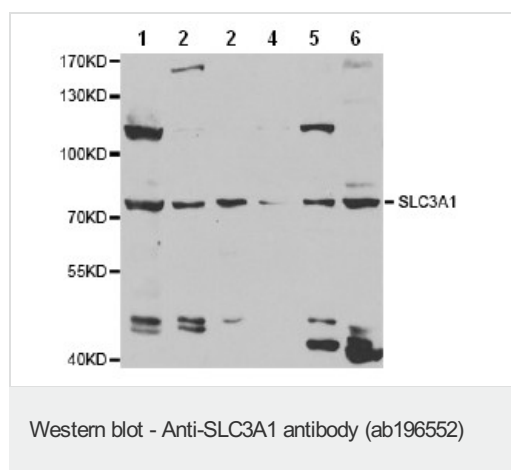
Application	Abreviews	Notes
IHC-P		1/50 - 1/200.

Application	Abreviews	Notes
WB		1/500 - 1/2000. Predicted molecular weight: 79 kDa.
ICC/IF		1/50 - 1/200.

Target

Function	Involved in the high-affinity, sodium-independent transport of cystine and neutral and dibasic amino acids (system B(0,+)-like activity). May function as an activator of SLC7A9 and be involved in the high-affinity reabsorption of cystine in the kidney tubule.
Tissue specificity	Expressed in the brush border membrane in the kidney (at protein level). Predominantly expressed in the kidney, small intestine and pancreas. Weakly expressed in liver.
Involvement in disease	Cystinuria Hypotonia-cystinuria syndrome
Cellular localization	Membrane.

Images



All lanes : Anti-SLC3A1 antibody (ab196552) at 1/500 dilution

Lane 1 : HT-29 extract

Lane 2 : HepG2 extract

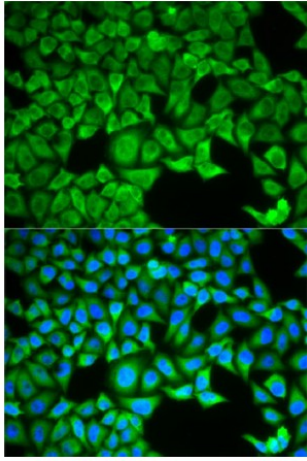
Lane 3 : 293T extract

Lane 4 : BXPC-3 extract

Lane 5 : PC12 extract

Lane 6 : Mouse liver extract

Predicted band size: 79 kDa



Immunofluorescence analysis of HeLa cells labeling SLC3A1 using ab196552, at 1/50 dilution. Lower panel shows DAPI for nuclear staining (Blue).

Immunocytochemistry/ Immunofluorescence - Anti-SLC3A1 antibody (ab196552)

Please note: All products are "FOR RESEARCH USE ONLY. NOT FOR USE IN DIAGNOSTIC PROCEDURES"

Our Abpromise to you: Quality guaranteed and expert technical support

- Replacement or refund for products not performing as stated on the datasheet
- Valid for 12 months from date of delivery
- Response to your inquiry within 24 hours
- We provide support in Chinese, English, French, German, Japanese and Spanish
- Extensive multi-media technical resources to help you
- We investigate all quality concerns to ensure our products perform to the highest standards

If the product does not perform as described on this datasheet, we will offer a refund or replacement. For full details of the Abpromise, please visit <https://www.abcam.com/abpromise> or contact our technical team.

Terms and conditions

- Guarantee only valid for products bought direct from Abcam or one of our authorized distributors