


Product datasheet

Anti-SLC41A1 antibody ab83701

1 Abreviews 2 References 1 Image

Overview

| | |
|----------------------------|--|
| Product name | Anti-SLC41A1 antibody |
| Description | Rabbit polyclonal to SLC41A1 |
| Host species | Rabbit |
| Tested applications | Suitable for: WB, ELISA |
| Species reactivity | Reacts with: Human Predicted to work with: Mouse, Rat, Rabbit, Horse, Chicken, Guinea pig, Cow, Cat, Dog, Zebrafish  |
| Immunogen | A synthetic peptide corresponding to a region within the N-terminal sequence 35-84 (TSEFLGPDGAGVEVVIESRANAKGVREEDALLENGSQSNESDDVSTDRG P) of Human SLC41A1 (NP_776253). |
| Positive control | 721_B Cell Lysate |

Properties

| | |
|-----------------------------|---|
| Form | Liquid |
| Storage instructions | Shipped at 4°C. Upon delivery aliquot and store at -20°C or -80°C. Avoid repeated freeze / thaw cycles. |
| Storage buffer | Preservative: 0.09% Sodium azide Constituents: 2% Sucrose, PBS |
| Purity | Immunogen affinity purified |
| Purification notes | Purified by peptide affinity chromatography method. |
| Clonality | Polyclonal |
| Isotype | IgG |

Applications

Our [Abpromise guarantee](#) covers the use of **ab83701** in the following tested applications.

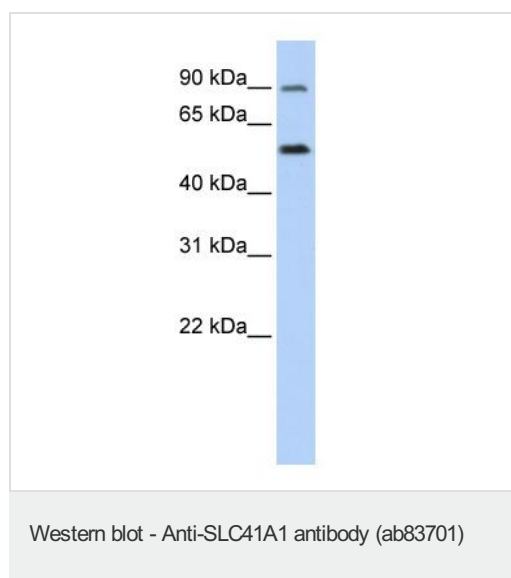
The application notes include recommended starting dilutions; optimal dilutions/concentrations should be determined by the end user.

| Application | Abreviews | Notes |
|-------------|-----------|--|
| WB | | Use a concentration of 1 µg/ml. Predicted molecular weight: 55 kDa. Good results were obtained when blocked with 5% non-fat dry milk in 0.05% PBS-T. |
| ELISA | | Use at an assay dependent concentration. ELISA titre using peptide based assay: 1:312500. |

Target

| | |
|------------------------------|---|
| Relevance | SLC41A1 belongs to the SLC41A transporter family. It acts as a magnesium transporter that is responsive to magnesium balance. |
| Cellular localization | Cell membrane; Multi-pass membrane protein. |

Images



Anti-SLC41A1 antibody (ab83701) at 1 µg/ml (diluted in 5% skim milk / PBS buffer) + 721_B Cell Lysate at 10 µg

Secondary

HRP conjugated anti-Rabbit IgG at 1/50000 dilution

Predicted band size: 55 kDa

Observed band size: 55 kDa

Additional bands at: 90 kDa. We are unsure as to the identity of these extra bands.

Gel concentration: 12%

Please note: All products are "FOR RESEARCH USE ONLY. NOT FOR USE IN DIAGNOSTIC PROCEDURES"

Our Abpromise to you: Quality guaranteed and expert technical support

- Replacement or refund for products not performing as stated on the datasheet
- Valid for 12 months from date of delivery
- Response to your inquiry within 24 hours
- We provide support in Chinese, English, French, German, Japanese and Spanish
- Extensive multi-media technical resources to help you
- We investigate all quality concerns to ensure our products perform to the highest standards

If the product does not perform as described on this datasheet, we will offer a refund or replacement. For full details of the Abpromise,

please visit <https://www.abcam.com/abpromise> or contact our technical team.

Terms and conditions

- Guarantee only valid for products bought direct from Abcam or one of our authorized distributors