

Product datasheet

Anti-SLC44A1/CTL1 antibody ab198252

[2 Images](#)

Overview

Product name	Anti-SLC44A1/CTL1 antibody
Description	Rabbit polyclonal to SLC44A1/CTL1
Host species	Rabbit
Tested applications	Suitable for: IHC-P
Species reactivity	Reacts with: Mouse, Rat, Human
Immunogen	Synthetic peptide corresponding to Human SLC44A1/CTL1 (internal sequence). Gene Accession: NP_536856 Database link: Q8WWI5
Positive control	Human liver cancer tissue and Human ovarian cancer tissue.
General notes	This product was previously labelled as SLC44A1

Properties

Form	Liquid
Storage instructions	Shipped at 4°C. Store at +4°C short term (1-2 weeks). Upon delivery aliquot. Store at -20°C long term. Avoid freeze / thaw cycle.
Storage buffer	pH: 7.3 Preservative: 0.05% Sodium azide Constituents: 50% Glycerol, 49% PBS
Purity	Immunogen affinity purified
Clonality	Polyclonal
Isotype	IgG

Applications

Our [Abpromise guarantee](#) covers the use of **ab198252** in the following tested applications.

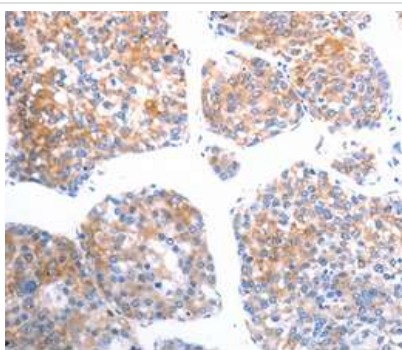
The application notes include recommended starting dilutions; optimal dilutions/concentrations should be determined by the end user.

Application	Abreviews	Notes
IHC-P		1/25 - 1/100.

Target

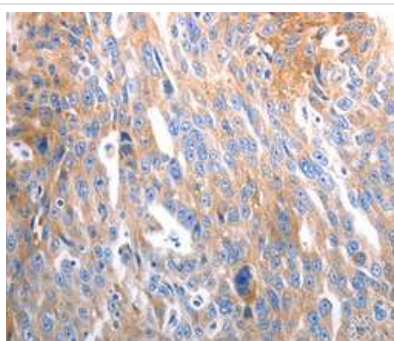
Function	Choline transporter. May be involved in membrane synthesis and myelin production.
Tissue specificity	Expressed in various cells of the hematopoietic system.
Sequence similarities	Belongs to the CTL (choline transporter-like) family.
Cellular localization	Cell membrane. Mitochondrion outer membrane.

Images



Immunohistochemical analysis of paraffin-embedded Human liver cancer tissue labeling SLC44A1/CTL1 using ab198252 at 1/25 dilution.

Immunohistochemistry (Formalin/PFA-fixed paraffin-embedded sections) - Anti-SLC44A1/CTL1 antibody (ab198252)



Immunohistochemical analysis of paraffin-embedded Human ovarian cancer tissue labeling SLC44A1/CTL1 using ab198252 at 1/25 dilution.

Immunohistochemistry (Formalin/PFA-fixed paraffin-embedded sections) - Anti-SLC44A1/CTL1 antibody (ab198252)

Please note: All products are "FOR RESEARCH USE ONLY. NOT FOR USE IN DIAGNOSTIC PROCEDURES"

Our Abpromise to you: Quality guaranteed and expert technical support

- Replacement or refund for products not performing as stated on the datasheet
- Valid for 12 months from date of delivery
- Response to your inquiry within 24 hours

- We provide support in Chinese, English, French, German, Japanese and Spanish
- Extensive multi-media technical resources to help you
- We investigate all quality concerns to ensure our products perform to the highest standards

If the product does not perform as described on this datasheet, we will offer a refund or replacement. For full details of the Abpromise, please visit <https://www.abcam.com/abpromise> or contact our technical team.

Terms and conditions

- Guarantee only valid for products bought direct from Abcam or one of our authorized distributors