

Product datasheet

Anti-SLC4A5 antibody ab237042

1 Image

Overview

---

<b>Product name</b>	Anti-SLC4A5 antibody
<b>Description</b>	Rabbit polyclonal to SLC4A5
<b>Host species</b>	Rabbit
<b>Tested applications</b>	<b>Suitable for:</b> ICC/IF
<b>Species reactivity</b>	<b>Reacts with:</b> Human
<b>Immunogen</b>	Recombinant fragment corresponding to Human SLC4A5 aa 1071-1137. Database link: <a href="#">Q9BY07</a>
<b>Positive control</b>	ICC/IF: HepG2 cells.
<b>General notes</b>	<p>Reproducibility is key to advancing scientific discovery and accelerating scientists' next breakthrough.</p> <p>Abcam is leading the way with our range of recombinant antibodies, knockout-validated antibodies and knockout cell lines, all of which support improved reproducibility.</p> <p>We are also planning to innovate the way in which we present recommended applications and species on our product datasheets, so that only applications &amp; species that have been tested in our own labs, our suppliers or by selected trusted collaborators are covered by our Abpromise™ guarantee.</p> <p>In preparation for this, we have started to update the applications &amp; species that this product is Abpromise guaranteed for.</p> <p>We are also updating the applications &amp; species that this product has been “predicted to work with,” however this information is not covered by our Abpromise guarantee.</p> <p>Applications &amp; species from publications and Abreviews that have not been tested in our own labs or in those of our suppliers are not covered by the Abpromise guarantee.</p> <p>Please check that this product meets your needs before purchasing. If you have any questions, special requirements or concerns, please send us an inquiry and/or contact our Support team ahead of purchase. Recommended alternatives for this product can be found below, as well as customer reviews and Q&amp;As.</p>

Properties

---

<b>Form</b>	Liquid
-------------	--------

<b>Storage instructions</b>	Shipped at 4°C. Store at +4°C short term (1-2 weeks). Upon delivery aliquot. Store at -20°C long term. Avoid freeze / thaw cycle.
<b>Storage buffer</b>	pH: 7.40 Constituents: 50% Glycerol (glycerin, glycerine), PBS, 0.03% Proclin 300
<b>Purity</b>	Protein G purified
<b>Purification notes</b>	Purity greater than 95%.
<b>Clonality</b>	Polyclonal
<b>Isotype</b>	IgG

## Applications

Our [Abpromise guarantee](#) covers the use of **ab237042** in the following tested applications.

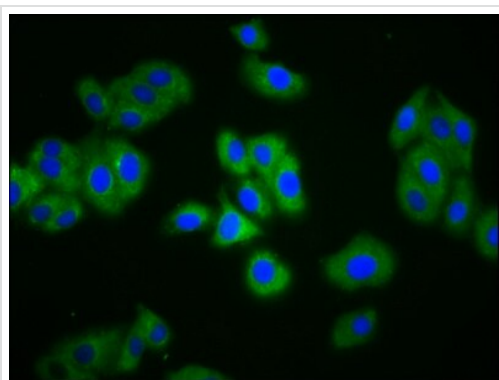
The application notes include recommended starting dilutions; optimal dilutions/concentrations should be determined by the end user.

Application	Abreviews	Notes
ICC/IF		1/50 - 1/200.

## Target

<b>Function</b>	Mediates sodium- and bicarbonate-dependent electrogenic sodium bicarbonate cotransport, with a Na(+):HCO <sub>3</sub> (-) stoichiometry of 2:1. May have a housekeeping function in regulating the pH of tissues in which it is expressed. May play a role in mediating Na(+):HCO <sub>3</sub> (-) cotransport in hepatocytes and intrahepatic cholangiocytes. Also may be important in protecting the renal paranchyma from alterations in urine pH.
<b>Tissue specificity</b>	Highest expression observed in liver, spleen and testis; moderate expression in the choroid plexus, hippocampus, cerebrum and cerebellum of brain, and in kidney cortex and kidney medulla. Also observed in heart, pancreas, muscle, lung, placenta, stomach and small intestine. Weakest expression seen in peripheral blood lymphocytes, colon, duodenum, jejunum, ileum and skeletal muscle.
<b>Sequence similarities</b>	Belongs to the anion exchanger (TC 2.A.31) family.
<b>Cellular localization</b>	Apical cell membrane. Expressed in the apical plasma membrane domain of a subset of collecting ducts in the renal medulla.

## Images



Immunocytochemistry/ Immunofluorescence - Anti-SLC4A5 antibody (ab237042)

4% formaldehyde-fixed, 0.2% Triton X-100 permeabilized HepG2 (human liver hepatocellular carcinoma cell line) cells stained for SLC4A5 (green) using ab237042 at 1/133 dilution in ICC/IF, followed by Alexa Fluor 488<sup>®</sup> conjugated Goat Anti-Rabbit IgG (H+L). Counter-stained with DAPI. Blocked in 10% normal Goat Serum.

**Please note:** All products are "FOR RESEARCH USE ONLY. NOT FOR USE IN DIAGNOSTIC PROCEDURES"

### Our Abpromise to you: Quality guaranteed and expert technical support

---

- Replacement or refund for products not performing as stated on the datasheet
- Valid for 12 months from date of delivery
- Response to your inquiry within 24 hours
- We provide support in Chinese, English, French, German, Japanese and Spanish
- Extensive multi-media technical resources to help you
- We investigate all quality concerns to ensure our products perform to the highest standards

If the product does not perform as described on this datasheet, we will offer a refund or replacement. For full details of the Abpromise, please visit <https://www.abcam.com/abpromise> or contact our technical team.

### Terms and conditions

---

- Guarantee only valid for products bought direct from Abcam or one of our authorized distributors