

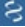


Product datasheet

Anti-SLC6A8 antibody ab62196

[1 References](#) [2 Images](#)

Overview

Product name	Anti-SLC6A8 antibody
Description	Rabbit polyclonal to SLC6A8
Host species	Rabbit
Tested applications	Suitable for: WB, IHC-P
Species reactivity	<p>Reacts with: Human</p> <p>Predicted to work with: Mouse, Rat, Rabbit, Horse, Guinea pig, Cow, Dog </p>
Immunogen	<p>A region within synthetic peptide: CVEIFRHEDC ANASLANLTC DQLADRRSPV IEFWENKVLRLSGGLEVPGA , corresponding to N terminal amino acids 181-230 of Human SLC6A8</p> <p> Run BLAST with ExPASy  Run BLAST with NCBI</p>
Positive control	IHC-P: Human muscle tissue. WB: MDA-MB-435s and THP-1 cell lysate.
General notes	<p>Reproducibility is key to advancing scientific discovery and accelerating scientists' next breakthrough.</p> <p>Abcam is leading the way with our range of recombinant antibodies, knockout-validated antibodies and knockout cell lines, all of which support improved reproducibility.</p> <p>We are also planning to innovate the way in which we present recommended applications and species on our product datasheets, so that only applications & species that have been tested in our own labs, our suppliers or by selected trusted collaborators are covered by our Abpromise™ guarantee.</p> <p>In preparation for this, we have started to update the applications & species that this product is Abpromise guaranteed for.</p> <p>We are also updating the applications & species that this product has been “predicted to work with,” however this information is not covered by our Abpromise guarantee.</p> <p>Applications & species from publications and Abreviews that have not been tested in our own labs or in those of our suppliers are not covered by the Abpromise guarantee.</p> <p>Please check that this product meets your needs before purchasing. If you have any questions, special requirements or concerns, please send us an inquiry and/or contact our Support team ahead of purchase. Recommended alternatives for this product can be found below, as well as customer reviews and Q&As.</p>

Properties

Form	Liquid
Storage instructions	Shipped at 4°C. Store at +4°C short term (1-2 weeks). Upon delivery aliquot. Store at -20°C long term. Avoid freeze / thaw cycle.
Storage buffer	pH: 7.2 Preservative: 0.09% Sodium azide Constituents: 2% Sucrose, PBS
Purity	Protein A purified
Clonality	Polyclonal
Isotype	IgG

Applications

Our [Abpromise guarantee](#) covers the use of **ab62196** in the following tested applications.

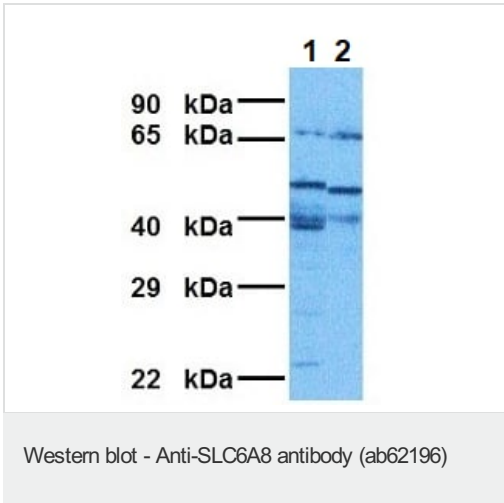
The application notes include recommended starting dilutions; optimal dilutions/concentrations should be determined by the end user.

Application	Abreviews	Notes
WB		Use a concentration of 1 µg/ml. Detects a band of approximately 70, 80, 58 kDa (predicted molecular weight: 71 kDa). Good results were obtained when blocked with 5% non-fat dry milk in 0.05% PBS-T.
IHC-P		Use a concentration of 4 - 8 µg/ml.

Target

Function	Required for the uptake of creatine in muscles and brain.
Tissue specificity	Predominantly expressed in skeletal muscle and kidney. Also found in brain, heart, colon, testis and prostate.
Involvement in disease	Cerebral creatine deficiency syndrome 1
Sequence similarities	Belongs to the sodium:neurotransmitter symporter (SNF) (TC 2.A.22) family. SLC6A8 subfamily.
Cellular localization	Membrane.

Images



All lanes : Anti-SLC6A8 antibody (ab62196) at 1 µg/ml

Lane 1 : MDA-MB-435s cell lysate

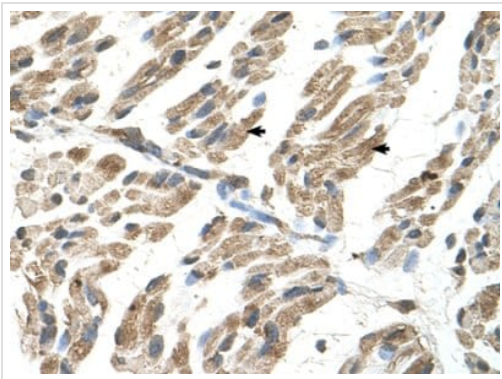
Lane 2 : THP-1 cell lysate

Lysates/proteins at 10 µg per lane.

Predicted band size: 71 kDa

Additional bands at: 58 kDa (possible isoform), 70 kDa (possible isoform), 80 kDa (possible isoform)

Western blot analysis labeling SLC6A8 with ab62196.



Immunohistochemistry (Formalin/PFA-fixed paraffin-embedded sections) analysis of human muscle tissue labelling SLC6A8 with ab62196 at 4-8µg/ml. Arrows indicate positively labelled skeletal muscle cells. Magnification: 400X.

Immunohistochemistry (Formalin/PFA-fixed paraffin-embedded sections) - Anti-SLC6A8 antibody (ab62196)

Please note: All products are "FOR RESEARCH USE ONLY. NOT FOR USE IN DIAGNOSTIC PROCEDURES"

Our Abpromise to you: Quality guaranteed and expert technical support

- Replacement or refund for products not performing as stated on the datasheet
- Valid for 12 months from date of delivery
- Response to your inquiry within 24 hours
- We provide support in Chinese, English, French, German, Japanese and Spanish
- Extensive multi-media technical resources to help you
- We investigate all quality concerns to ensure our products perform to the highest standards

If the product does not perform as described on this datasheet, we will offer a refund or replacement. For full details of the Abpromise, please visit <https://www.abcam.com/abpromise> or contact our technical team.

Terms and conditions

- Guarantee only valid for products bought direct from Abcam or one of our authorized distributors