

Product datasheet

Anti-SLP-2 antibody ab37531

★★★★★ 2 Abreviews 1 References 1 Image

Overview

Product name	Anti-SLP-2 antibody
Description	Chicken polyclonal to SLP-2
Host species	Chicken
Species reactivity	Reacts with: Mouse, Rat, Human
Immunogen	Synthetic peptide corresponding to Human SLP-2 aa 171-356 (C terminal).
General notes	<p>Previously labelled as STOML2.</p> <p>Reproducibility is key to advancing scientific discovery and accelerating scientists' next breakthrough.</p> <p>Abcam is leading the way with our range of recombinant antibodies, knockout-validated antibodies and knockout cell lines, all of which support improved reproducibility.</p> <p>We are also planning to innovate the way in which we present recommended applications and species on our product datasheets, so that only applications & species that have been tested in our own labs, our suppliers or by selected trusted collaborators are covered by our Abpromise™ guarantee.</p> <p>In preparation for this, we have started to update the applications & species that this product is Abpromise guaranteed for.</p> <p>We are also updating the applications & species that this product has been “predicted to work with,” however this information is not covered by our Abpromise guarantee.</p> <p>Applications & species from publications and Abreviews that have not been tested in our own labs or in those of our suppliers are not covered by the Abpromise guarantee.</p> <p>Please check that this product meets your needs before purchasing. If you have any questions, special requirements or concerns, please send us an inquiry and/or contact our Support team ahead of purchase. Recommended alternatives for this product can be found below, as well as customer reviews and Q&As.</p>

Properties

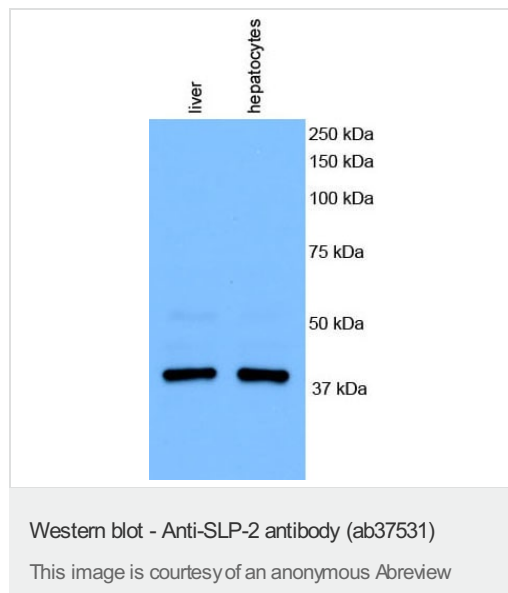
Form	Liquid
Storage instructions	Shipped at 4°C. Store at +4°C short term (1-2 weeks). Upon delivery aliquot. Store at -20°C long term.

Storage buffer	Constituent: PBS
Purity	Immunogen affinity purified
Clonality	Polyclonal
Isotype	IgY

Target

Tissue specificity	Ubiquitously expressed at low levels.
Sequence similarities	Belongs to the band 7/mec-2 family.
Cellular localization	Membrane. Cytoplasm. Cytoplasm > cytoskeleton. Associated with the cytoskeleton.

Images



All lanes : Anti-SLP-2 antibody (ab37531) at 1/2000 dilution

Lane 1 : Mouse liver tissue lysate

Lane 2 : Mouse hepatocytes cell lysate

Lysates/proteins at 25 µg per lane.

Secondary

All lanes : HRP-conjugated goat anti-chicken IgY polyclonal at 1/20000 dilution

Developed using the ECL technique.

Performed under reducing conditions.

Observed band size: 39 kDa

[why is the actual band size different from the predicted?](#)

Exposure time: 20 seconds

Please note: All products are "FOR RESEARCH USE ONLY. NOT FOR USE IN DIAGNOSTIC PROCEDURES"

Our Abpromise to you: Quality guaranteed and expert technical support

- Replacement or refund for products not performing as stated on the datasheet
- Valid for 12 months from date of delivery
- Response to your inquiry within 24 hours

- We provide support in Chinese, English, French, German, Japanese and Spanish
- Extensive multi-media technical resources to help you
- We investigate all quality concerns to ensure our products perform to the highest standards

If the product does not perform as described on this datasheet, we will offer a refund or replacement. For full details of the Abpromise, please visit <https://www.abcam.com/abpromise> or contact our technical team.

Terms and conditions

- Guarantee only valid for products bought direct from Abcam or one of our authorized distributors