

Product datasheet

Anti-TAGLN/Transgelin antibody ab14106

★★★★★ 26 Abreviews 174 References 8 Images

Overview

Product name	Anti-TAGLN/Transgelin antibody
Description	Rabbit polyclonal to TAGLN/Transgelin
Host species	Rabbit
Specificity	Recognises a band at 23kD that is specifically blocked by the immunising peptide.
Tested applications	Suitable for: ICC/IF, IHC-P, IHC-Fr, WB, ICC
Species reactivity	Reacts with: Mouse, Rat, Chicken, Cow, Human, Pig
Immunogen	Synthetic peptide within Mouse TAGLN/Transgelin aa 150 to the C-terminus conjugated to keyhole limpet haemocyanin. The exact sequence is proprietary. (Peptide available as ab16067)
Positive control	WB: Human smooth muscle cell lysate. HeLa whole cell and nuclear extract. Human skeletal muscle tissue lysate. Human, mouse and rat colon tissue lysate. ICC/IF: HeLa cells.
General notes	Abcam recommended secondaries - Goat Anti-Rabbit HRP (ab205718) and Goat Anti-Rabbit Alexa Fluor® 488 (ab150077). See other anti-rabbit secondary antibodies that can be used with this antibody.

Properties

Form	Liquid
Storage instructions	Shipped at 4°C. Store at +4°C short term (1-2 weeks). Upon delivery aliquot. Store at -20°C or -80°C. Avoid freeze / thaw cycle.
Storage buffer	Preservative: 0.02% Sodium Azide Constituents: 1% BSA, PBS, pH 7.4
Purity	Immunogen affinity purified
Clonality	Polyclonal
Isotype	IgG

Applications

Our [Abpromise guarantee](#) covers the use of **ab14106** in the following tested applications.

The application notes include recommended starting dilutions; optimal dilutions/concentrations should be determined by the end user.

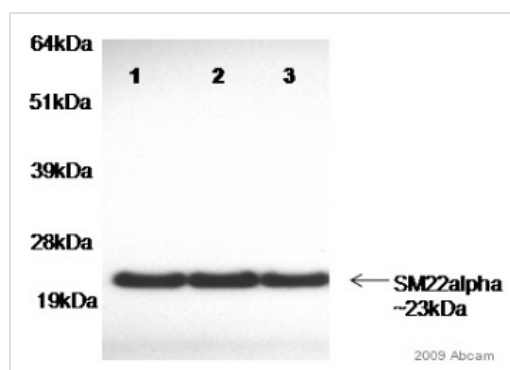
Application	Abreviews	Notes
ICC/IF	★★★★★	Use a concentration of 1 - 5 µg/ml.
IHC-P	★★★★★	1/200.
IHC-Fr	★★★★★	Use at an assay dependent concentration.
WB	★★★★★	Use a concentration of 1 µg/ml. Detects a band of approximately 23 kDa (predicted molecular weight: 23 kDa).
ICC	★★★★★	Use at an assay dependent concentration.

Target

Relevance Actin cross-linking/gelling protein (By similarity). Involved in calcium interactions and contractile properties of the cell that may contribute to replicative senescence.

Cellular localization Cytoplasmic

Images



Western blot - Anti-TAGLN/Transgelin antibody (ab14106)

This image is a courtesy of Anonymous Abreview

All lanes : Anti-TAGLN/Transgelin antibody (ab14106) at 1/1000 dilution

All lanes : Lysates prepared from human primary smooth muscle cells

Lysates/proteins at 30 µg per lane.

Secondary

All lanes : HRP-conjugated bovine polyclonal to rabbit IgG at 1/2000 dilution

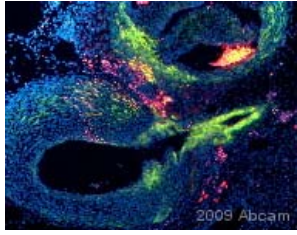
Developed using the ECL technique.

Performed under reducing conditions.

Predicted band size: 23 kDa

Observed band size: 23 kDa

Exposure time: 2 minutes

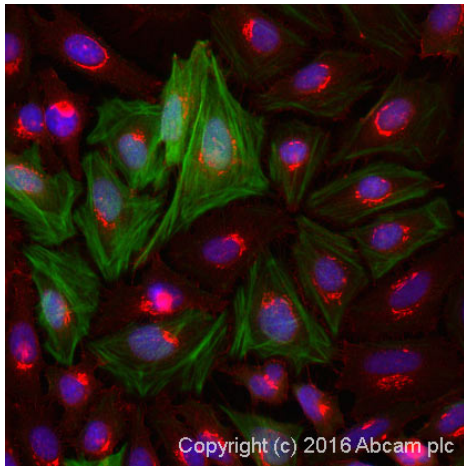


Immunohistochemistry (Formalin/PFA-fixed paraffin-embedded sections) - Anti-TAGLN/Transgelin antibody (ab14106)

This image is courtesy of an anonymous Abreview.

ab14106, at 1/100, staining SM22 alpha in chicken smooth muscle tissue sections by immunohistochemistry (formalin/PFA-fixed paraffin-embedded sections).

Sections were fixed in methacarn (60% methanol, 30% chloroform, 10% acetic acid), prior to blocking in 2% serum for 5 minutes at 25°C and then incubated with ab14106, for 1 hour at 25°C. An Alexa-Fluor® 488 goat polyclonal to rabbit Ig, diluted 1/100, was used as the secondary antibody.

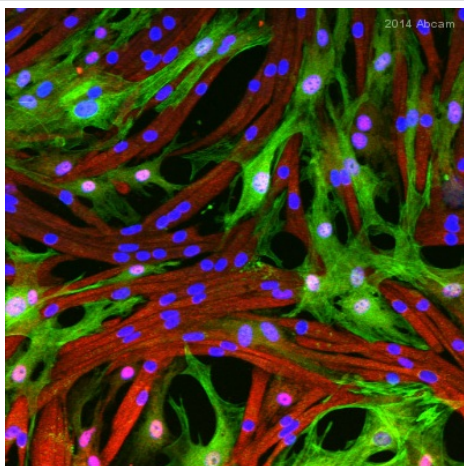


Immunocytochemistry/ Immunofluorescence - Anti-TAGLN/Transgelin antibody (ab14106)

ab14106 stained HeLa (Human epithelial cell line from cervix adenocarcinoma) cells.

The cells were fixed in 100% methanol for 5 minutes, permeabilized in 0.1% PBS-Triton X-100 for 5 minutes and then incubated in 1% BSA / 10% normal goat serum / 0.3M glycine in 0.1% PBS-Tween for 1 hour at room temperature to block non-specific protein-protein interactions. The cells were then incubated with the antibody (ab14106 at 1 µg/ml) overnight at +4°C. The secondary antibody (pseudo-colored green) was ab150081 Goat Anti-Rabbit IgG H&L (Alexa Fluor® 488) preadsorbed used at a 1/1000 dilution for 1 hour at room temperature. Alexa Fluor® 594 WGA was used to label plasma membranes (pseudo-colored red) at a 1/200 dilution for 1 hour at room temperature.

DAPI was used to stain the cell nuclei (pseudo-colored blue) at a concentration of 1.43µM for 1 hour at room temperature.

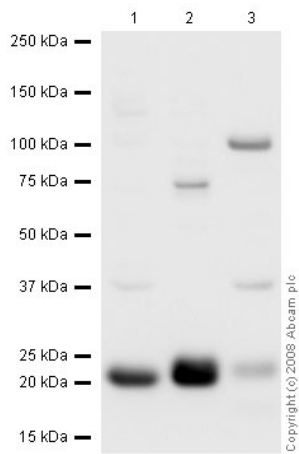


Immunocytochemistry/ Immunofluorescence - Anti-TAGLN/Transgelin antibody (ab14106)

This image is courtesy of an anonymous Abreview.

ab14106 staining SM22 alpha in mouse muscle cells by ICC/IF (Immunocytochemistry/immunofluorescence).

Cells were fixed with paraformaldehyde, permeabilized with 0.1% Triton X-100 and blocked with 10% serum for 30 minutes at 25°C. Samples were incubated with primary antibody (1/100 in PBS) for 18 hours at 4°C. An Alexa Fluor® 488-conjugated goat anti-rabbit IgG polyclonal was used as the secondary antibody at a dilution of 1/1000.



Western blot - Anti-TAGLN/Transgelin antibody (ab14106)

All lanes : Anti-TAGLN/Transgelin antibody (ab14106) at 1 µg/ml

Lane 1 : HeLa (Human epithelial cell line from cervix adenocarcinoma) whole cell lysate

Lane 2 : HeLa nuclear extract

Lane 3 : Human skeletal muscle tissue lysate

Lysates/proteins at 20 µg per lane.

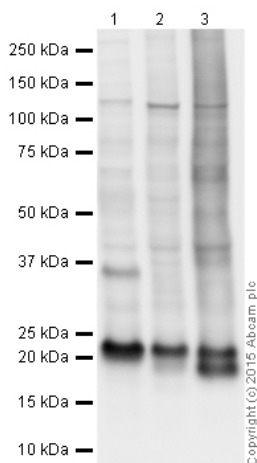
Secondary

All lanes : Alexa Fluor Goat polyclonal to Rabbit IgG at 1/10000 dilution

Predicted band size: 23 kDa

Observed band size: 23 kDa

The band was completely abolished by peptide blocking with [ab16067](#) (immunizing peptide) - not shown.



Western blot - Anti-TAGLN/Transgelin antibody (ab14106)

All lanes : Anti-TAGLN/Transgelin antibody (ab14106) at 1 µg/ml

Lane 1 : Human colon tissue lysate - total protein ([ab30051](#))

Lane 2 : Mouse colon tissue lysate

Lane 3 : Rat colon tissue lysate

Lysates/proteins at 10 µg per lane.

Secondary

All lanes : Goat Anti-Rabbit IgG H&L (HRP) preadsorbed at 1/50000 dilution

Developed using the ECL technique.

Performed under reducing conditions.

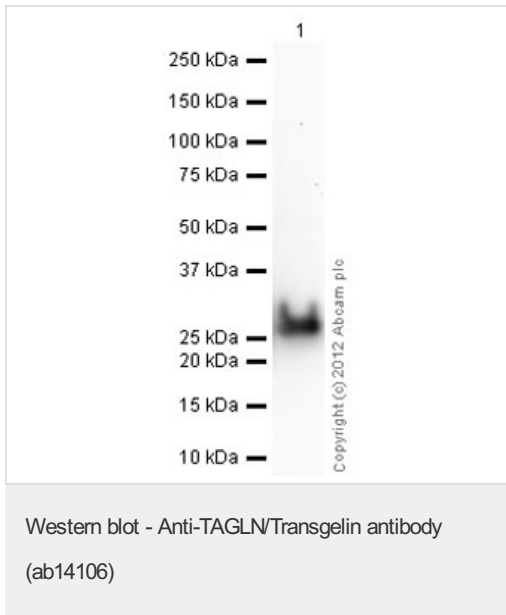
Predicted band size: 23 kDa

Observed band size: 23 kDa

Additional bands at: 115 kDa, 20 kDa, 36 kDa. We are unsure as to the identity of these extra bands.

Exposure time: 5 seconds

This blot was produced using a 4-12% Bis-tris gel under the MES buffer system. The gel was run at 200V for 35 minutes before being transferred onto a Nitrocellulose membrane at 30V for 70 minutes. The membrane was then blocked for an hour using 2% Bovine Serum Albumin before being incubated with ab14106 overnight at 4°C. Antibody binding was detected using an anti-rabbit antibody conjugated to HRP, and visualised using ECL development solution [ab133406](#).



Anti-TAGLN/Transgelin antibody (ab14106) at 1 µg/ml +
Recombinant Human TAGLN/Transgelin protein ([ab101469](#)) at
0.01 µg

Secondary

Goat Anti-Rabbit IgG H&L (HRP) preadsorbed ([ab97080](#)) at
1/5000 dilution

Developed using the ECL technique.

Performed under reducing conditions.

Predicted band size: 23 kDa

Exposure time: 30 seconds



Western blot - Anti-SM22 alpha antibody (ab14106)

Please note: All products are "FOR RESEARCH USE ONLY AND ARE NOT INTENDED FOR DIAGNOSTIC OR THERAPEUTIC USE"

Our Abpromise to you: Quality guaranteed and expert technical support

- Replacement or refund for products not performing as stated on the datasheet
- Valid for 12 months from date of delivery
- Response to your inquiry within 24 hours
- We provide support in Chinese, English, French, German, Japanese and Spanish
- Extensive multi-media technical resources to help you
- We investigate all quality concerns to ensure our products perform to the highest standards

If the product does not perform as described on this datasheet, we will offer a refund or replacement. For full details of the Abpromise, please visit <https://www.abcam.com/abpromise> or contact our technical team.

Terms and conditions

- Guarantee only valid for products bought direct from Abcam or one of our authorized distributors