

## Product datasheet

# Anti-Smad1 antibody [913C1b] ab53745

★★★★★ 1 Abreviews 1 References 4 Images

### Overview

---

<b>Product name</b>	Anti-Smad1 antibody [913C1b]
<b>Description</b>	Mouse monoclonal [913C1b] to Smad1
<b>Host species</b>	Mouse
<b>Tested applications</b>	<b>Suitable for:</b> WB, Flow Cyt
<b>Species reactivity</b>	<b>Reacts with:</b> Human
<b>Immunogen</b>	Recombinant Smad1
<b>Positive control</b>	WB: HEK293, F2408 and NIH3T3 whole cell lysates
<b>General notes</b>	<p>Reproducibility is key to advancing scientific discovery and accelerating scientists' next breakthrough.</p> <p>Abcam is leading the way with our range of recombinant antibodies, knockout-validated antibodies and knockout cell lines, all of which support improved reproducibility.</p> <p>We are also planning to innovate the way in which we present recommended applications and species on our product datasheets, so that only applications &amp; species that have been tested in our own labs, our suppliers or by selected trusted collaborators are covered by our Abpromise™ guarantee.</p> <p>In preparation for this, we have started to update the applications &amp; species that this product is Abpromise guaranteed for.</p> <p>We are also updating the applications &amp; species that this product has been “predicted to work with,” however this information is not covered by our Abpromise guarantee.</p> <p>Applications &amp; species from publications and Abreviews that have not been tested in our own labs or in those of our suppliers are not covered by the Abpromise guarantee.</p> <p>Please check that this product meets your needs before purchasing. If you have any questions, special requirements or concerns, please send us an inquiry and/or contact our Support team ahead of purchase. Recommended alternatives for this product can be found below, as well as customer reviews and Q&amp;As.</p>

### Properties

---

<b>Form</b>	Liquid
<b>Storage instructions</b>	Shipped at 4°C. Store at 4°C (stable for up to 12 months). Store at -20°C or -80°C.

<b>Storage buffer</b>	pH: 7.40 Preservative: 0.05% Sodium azide Constituents: 1% BSA, 0.03% Potassium phosphate, 0.812% Sodium chloride, 0.1312% Sodium phosphate, 0.0225% Potassium chloride, 0.0204% Monobasic dihydrogen potassium phosphate, 0.1136% Dibasic monohydrogen sodium phosphate
<b>Purity</b>	Protein G purified
<b>Clonality</b>	Monoclonal
<b>Clone number</b>	913C1b
<b>Isotype</b>	IgG1

## Applications

Our [Abpromise guarantee](#) covers the use of **ab53745** in the following tested applications.

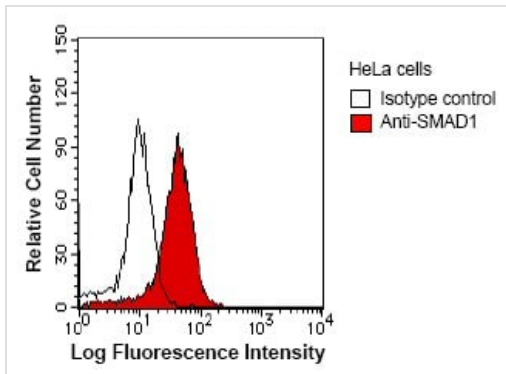
The application notes include recommended starting dilutions; optimal dilutions/concentrations should be determined by the end user.

Application	Abreviews	Notes
WB	★★★★★	1/50. Detects a band of approximately 60 kDa (predicted molecular weight: 52 kDa).
Flow Cyt		Use at an assay dependent concentration. <a href="#">ab170190</a> - Mouse monoclonal IgG1, is suitable for use as an isotype control with this antibody.

## Target

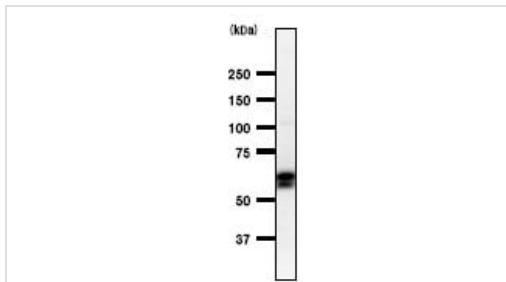
<b>Function</b>	Transcriptional modulator activated by BMP (bone morphogenetic proteins) type 1 receptor kinase. SMAD1 is a receptor-regulated SMAD (R-SMAD). SMAD1/OAZ1/PSMB4 complex mediates the degradation of the CREBBP/EP300 repressor SNIP1.
<b>Tissue specificity</b>	Ubiquitous. Highest expression seen in the heart and skeletal muscle.
<b>Sequence similarities</b>	Belongs to the dwarfin/SMAD family. Contains 1 MH1 (MAD homology 1) domain. Contains 1 MH2 (MAD homology 2) domain.
<b>Post-translational modifications</b>	Phosphorylated on serine by BMP type 1 receptor kinase. Ubiquitin-mediated proteolysis by SMAD-specific E3 ubiquitin ligase SMURF1.
<b>Cellular localization</b>	Cytoplasm. Nucleus. Cytoplasmic in the absence of ligand. Migrates to the nucleus when complexed with SMAD4. Co-localizes with LEMD3 at the nucleus inner membrane.

## Images



Flow Cytometry - Anti-Smad1 antibody [913C1b]  
(ab53745)

Using 0.5µg Anti-SMAD1 antibody (ab53745) and 0.25µg Goat anti-Mouse secondary.



Western blot - Anti-Smad1 antibody [913C1b]  
(ab53745)

Anti-Smad1 antibody [913C1b] (ab53745) at 1/50 dilution + HEK293 whole cell lysate at 25 µg

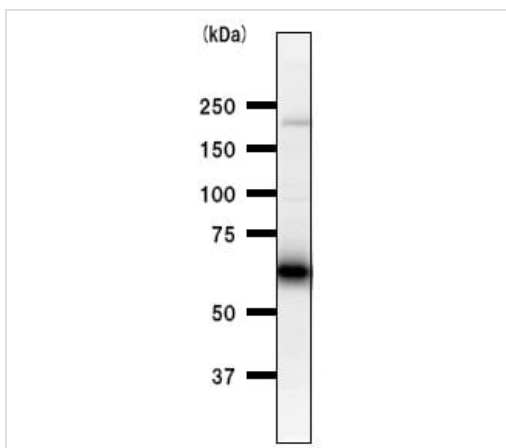
**Secondary**

Mouse IgG antibody at 1/2500 dilution

**Predicted band size:** 52 kDa

**Observed band size:** 60 kDa

[why is the actual band size different from the predicted?](#)



Western blot - Anti-Smad1 antibody [913C1b]  
(ab53745)

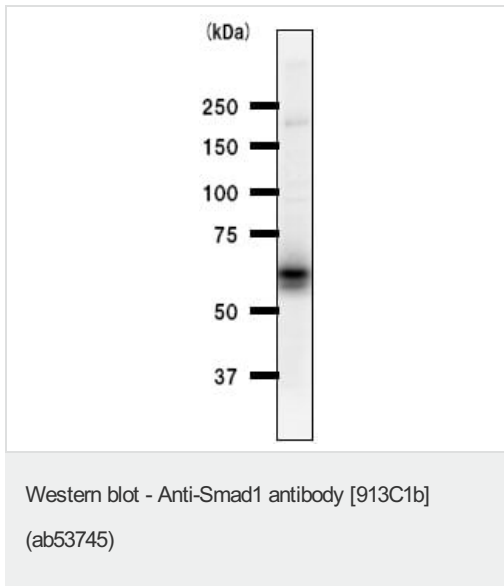
Anti-Smad1 antibody [913C1b] (ab53745) at 1/50 dilution + NIH3T3 whole cell lysate at 25 µg

**Secondary**

Mouse IgG at 1/2500 dilution

**Predicted band size:** 52 kDa

**Observed band size:** 62 kDa [why is the actual band size different from the predicted?](#)



Anti-Smad1 antibody [913C1b] (ab53745) at 1/50 dilution + F2408 whole cell lysate at 25 µg

**Secondary**

Mouse IgG at 1/2500 dilution

**Predicted band size:** 52 kDa

**Observed band size:** 62 kDa [why is the actual band size different from the predicted?](#)

**Please note:** All products are "FOR RESEARCH USE ONLY. NOT FOR USE IN DIAGNOSTIC PROCEDURES"

**Our Abpromise to you: Quality guaranteed and expert technical support**

---

- Replacement or refund for products not performing as stated on the datasheet
- Valid for 12 months from date of delivery
- Response to your inquiry within 24 hours
  
- We provide support in Chinese, English, French, German, Japanese and Spanish
- Extensive multi-media technical resources to help you
- We investigate all quality concerns to ensure our products perform to the highest standards

If the product does not perform as described on this datasheet, we will offer a refund or replacement. For full details of the Abpromise, please visit <https://www.abcam.com/abpromise> or contact our technical team.

**Terms and conditions**

---

- Guarantee only valid for products bought direct from Abcam or one of our authorized distributors