




## Product datasheet

# Anti-Smad4 antibody ab236321

2 References 5 Images

### Overview

<b>Product name</b>	Anti-Smad4 antibody
<b>Description</b>	Rabbit polyclonal to Smad4
<b>Host species</b>	Rabbit
<b>Tested applications</b>	<b>Suitable for:</b> IP, IHC-P, WB
<b>Species reactivity</b>	<b>Reacts with:</b> Mouse, Human <b>Predicted to work with:</b> Rat, Cow, Pig 
<b>Immunogen</b>	Recombinant fragment corresponding to Human Smad4 aa 27-195. Sequence: RQGGSETFAKRAIESLVKKLKEKKDELDSLITAITTNGAH PSKCVTIQR TLDGRLQVAGRKGFPHVIYARLWRWPDLHKNELKHKVYC QYAFDLKCDSV CVNPYHYERVVSPGIDLSGLTLQSNAPSSMMVKDEYVHD FEGQPSLSTEG HSIQTIQHPPSNRASTETY  Database link: <a href="#">Q13485</a>  <a href="#">Run BLAST with</a>  <a href="#">Run BLAST with</a>
<b>Positive control</b>	WB: SH-SY5Y, 3T3 and HepG2 whole cell lysate. IHC-P: Human colon cancer and kidney tissue. IP: Jurkat cells.
<b>General notes</b>	Reproducibility is key to advancing scientific discovery and accelerating scientists' next breakthrough.  Abcam is leading the way with our range of recombinant antibodies, knockout-validated antibodies and knockout cell lines, all of which support improved reproducibility.  We are also planning to innovate the way in which we present recommended applications and species on our product datasheets, so that only applications & species that have been tested in our own labs, our suppliers or by selected trusted collaborators are covered by our Abpromise™ guarantee.  In preparation for this, we have started to update the applications & species that this product is Abpromise guaranteed for.  We are also updating the applications & species that this product has been “predicted to work with,” however this information is not covered by our Abpromise guarantee.  Applications & species from publications and Abreviews that have not been tested in our own

labs or in those of our suppliers are not covered by the Abpromise guarantee.

Please check that this product meets your needs before purchasing. If you have any questions, special requirements or concerns, please send us an inquiry and/or contact our Support team ahead of purchase. Recommended alternatives for this product can be found below, as well as customer reviews and Q&As.

## Properties

<b>Form</b>	Liquid
<b>Storage instructions</b>	Shipped at 4°C. Store at +4°C short term (1-2 weeks). Upon delivery aliquot. Store at -20°C long term. Avoid freeze / thaw cycle.
<b>Storage buffer</b>	pH: 7.40 Constituents: PBS, 50% Glycerol, 0.03% Proclin 300
<b>Purity</b>	Protein G purified
<b>Purification notes</b>	Protein >95%.
<b>Clonality</b>	Polyclonal
<b>Isotype</b>	IgG

## Applications

Our [Abpromise guarantee](#) covers the use of **ab236321** in the following tested applications.

The application notes include recommended starting dilutions; optimal dilutions/concentrations should be determined by the end user.

Application	Abreviews	Notes
IP		1/200 - 1/2000.
IHC-P		1/20 - 1/200.
WB		1/500 - 1/2000. Predicted molecular weight: 60 kDa.

## Target

<b>Function</b>	Common SMAD (co-SMAD) is the coactivator and mediator of signal transduction by TGF-beta (transforming growth factor). Component of the heterotrimeric SMAD2/SMAD3-SMAD4 complex that forms in the nucleus and is required for the TGF-mediated signaling. Promotes binding of the SMAD2/SMAD4/FAST-1 complex to DNA and provides an activation function required for SMAD1 or SMAD2 to stimulate transcription. Component of the multimeric SMAD3/SMAD4/JUN/FOS complex which forms at the AP1 promoter site; required for synergistic transcriptional activity in response to TGF-beta. May act as a tumor suppressor.
<b>Involvement in disease</b>	Defects in SMAD4 are a cause of pancreatic cancer (PNCA) [MIM:260350]. Defects in SMAD4 are a cause of juvenile polyposis syndrome (JPS) [MIM:174900]; also known as juvenile intestinal polyposis (JIP). JPS is an autosomal dominant gastrointestinal hamartomatous polyposis syndrome in which patients are at risk for developing gastrointestinal cancers. The lesions are typified by a smooth histological appearance, predominant stroma, cystic spaces and lack of a smooth muscle core. Multiple juvenile polyps usually occur in a number

of Mendelian disorders. Sometimes, these polyps occur without associated features as in JPS; here, polyps tend to occur in the large bowel and are associated with an increased risk of colon and other gastrointestinal cancers.

Defects in SMAD4 are a cause of juvenile polyposis/hereditary hemorrhagic telangiectasia syndrome (JP/HHT) [MIM:175050]. JP/HHT syndrome phenotype consists of the coexistence of juvenile polyposis (JP) and hereditary hemorrhagic telangiectasia (HHT) [MIM:187300] in a single individual. JP and HHT are autosomal dominant disorders with distinct and non-overlapping clinical features. The former, an inherited gastrointestinal malignancy predisposition, is caused by mutations in SMAD4 or BMPR1A, and the latter is a vascular malformation disorder caused by mutations in ENG or ACVRL1. All four genes encode proteins involved in the transforming-growth-factor-signaling pathway. Although there are reports of patients and families with phenotypes of both disorders combined, the genetic etiology of this association is unknown. Defects in SMAD4 may be a cause of colorectal cancer (CRC) [MIM:114500].

### Sequence similarities

Belongs to the dwarfin/SMAD family.

Contains 1 MH1 (MAD homology 1) domain.

Contains 1 MH2 (MAD homology 2) domain.

### Domain

The MH1 domain is required for DNA binding.

The MH2 domain is required for both homomeric and heteromeric interactions and for transcriptional regulation. Sufficient for nuclear import.

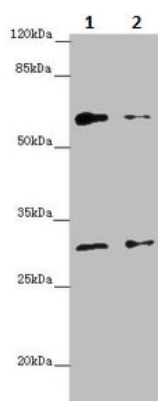
### Post-translational modifications

Monoubiquitinated on Lys-519 by E3 ubiquitin-protein ligase TRIM33. Monoubiquitination hampers its ability to form a stable complex with activated SMAD2/3 resulting in inhibition of TGF-beta/BMP signaling cascade. Deubiquitination by USP9X restores its competence to mediate TGF-beta signaling.

### Cellular localization

Cytoplasm. Nucleus. Cytoplasmic in the absence of ligand. Migrates to the nucleus when complexed with R-SMAD.

## Images



Western blot - Anti-Smad4 antibody (ab236321)

**All lanes :** Anti-Smad4 antibody (ab236321) at 1/500 dilution

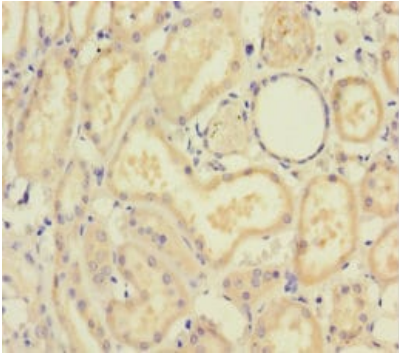
**Lane 1 :** SH-SY5Y (human neuroblastoma cell line from bone marrow) whole cell lysate

**Lane 2 :** NIH/3T3 (mouse embryo fibroblast cell line) whole cell lysate

### Secondary

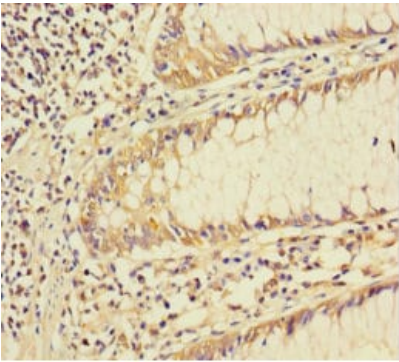
**All lanes :** Goat polyclonal to rabbit IgG at 1/10000 dilution

**Predicted band size:** 60 kDa



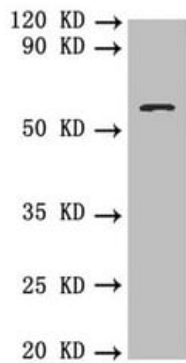
Immunohistochemistry (Formalin/PFA-fixed paraffin-embedded sections) - Anti-Smad4 antibody (ab236321)

Paraffin-embedded human kidney tissue stained for Smad4 using ab236321 at 1/100 dilution in immunohistochemical analysis.



Immunohistochemistry (Formalin/PFA-fixed paraffin-embedded sections) - Anti-Smad4 antibody (ab236321)

Paraffin-embedded human colon cancer tissue stained for Smad4 using ab236321 at 1/100 dilution in immunohistochemical analysis.



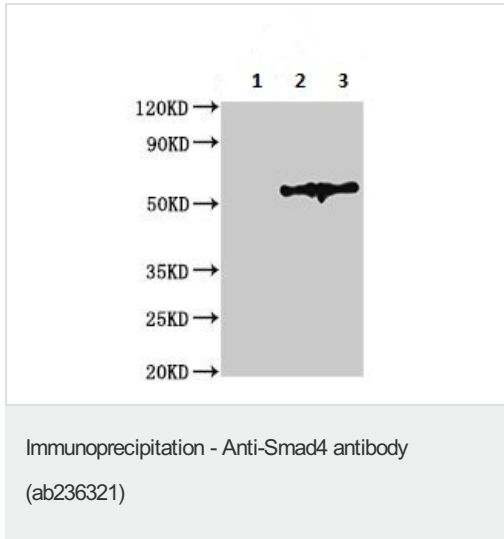
Western blot - Anti-Smad4 antibody (ab236321)

Anti-Smad4 antibody (ab236321) at 1/500 dilution + HepG2 (human liver hepatocellular carcinoma cell line) whole cell lysate

### Secondary

Goat polyclonal to rabbit IgG at 1/10000 dilution

**Predicted band size:** 60 kDa



Smad4 was immunoprecipitated from 0.5 mg Jurkat (human T cell leukemia cell line from peripheral blood) whole cell lysate with ab236321.

**Lane 1:** Rabbit control IgG instead of ab236321 in Jurkat whole cell lysate.

**Lane 2:** ab236321 IP in Jurkat whole cell lysate.

**Lane 3:** Jurkat whole cell lysate 10 µg (Input).

For western blotting, a HRP-conjugated Protein G antibody was used as the secondary antibody at 1/2000 dilution.

**Please note:** All products are "FOR RESEARCH USE ONLY. NOT FOR USE IN DIAGNOSTIC PROCEDURES"

### Our Abpromise to you: Quality guaranteed and expert technical support

- Replacement or refund for products not performing as stated on the datasheet
- Valid for 12 months from date of delivery
- Response to your inquiry within 24 hours
- We provide support in Chinese, English, French, German, Japanese and Spanish
- Extensive multi-media technical resources to help you
- We investigate all quality concerns to ensure our products perform to the highest standards

If the product does not perform as described on this datasheet, we will offer a refund or replacement. For full details of the Abpromise, please visit <https://www.abcam.com/abpromise> or contact our technical team.

### Terms and conditions

- Guarantee only valid for products bought direct from Abcam or one of our authorized distributors