

Product datasheet

Anti-SMARCA2 / BRM antibody ab264163

2 Images

Overview

Product name	Anti-SMARCA2 / BRM antibody
Description	Rabbit polyclonal to SMARCA2 / BRM
Host species	Rabbit
Tested applications	Suitable for: IP, WB
Species reactivity	Reacts with: Human
Immunogen	Synthetic peptide within Human SMARCA2/ BRM aa 1-50. The exact sequence is proprietary. CAA51407.1 Database link: P51531
Positive control	WB: HeLa whole cell lysate. IP: HeLa whole cell lysate.
General notes	<p>The Life Science industry has been in the grips of a reproducibility crisis for a number of years. Abcam is leading the way in addressing this with our range of recombinant monoclonal antibodies and knockout edited cell lines for gold-standard validation. Please check that this product meets your needs before purchasing.</p> <p>If you have any questions, special requirements or concerns, please send us an inquiry and/or contact our Support team ahead of purchase. Recommended alternatives for this product can be found below, along with publications, customer reviews and Q&As</p>

Properties

Form	Liquid
Storage instructions	Shipped at 4°C. Store at +4°C short term (1-2 weeks). Upon delivery aliquot. Store at -20°C. Avoid freeze / thaw cycle.
Storage buffer	pH: 6.8 Preservative: 0.09% Sodium azide Constituents: Tris buffered saline, 0.1% BSA
Purity	Immunogen affinity purified
Clonality	Polyclonal
Isotype	IgG

Applications

The Abpromise guarantee

Our [Abpromise guarantee](#) covers the use of ab264163 in the following tested applications.

The application notes include recommended starting dilutions; optimal dilutions/concentrations should be determined by the end user.

Application	Abreviews	Notes
IP		Use at 2-5 µg/mg of lysate.
WB		1/2000 - 1/10000. Predicted molecular weight: 181 kDa.

Target**Function**

Transcriptional coactivator cooperating with nuclear hormone receptors to potentiate transcriptional activation. Also involved in vitamin D-coupled transcription regulation via its association with the WINAC complex, a chromatin-remodeling complex recruited by vitamin D receptor (VDR), which is required for the ligand-bound VDR-mediated transrepression of the CYP27B1 gene. Belongs to the neural progenitors-specific chromatin remodeling complex (npBAF complex) and the neuron-specific chromatin remodeling complex (nBAF complex). During neural development a switch from a stem/progenitor to a post-mitotic chromatin remodeling mechanism occurs as neurons exit the cell cycle and become committed to their adult state. The transition from proliferating neural stem/progenitor cells to post-mitotic neurons requires a switch in subunit composition of the npBAF and nBAF complexes. As neural progenitors exit mitosis and differentiate into neurons, npBAF complexes which contain ACTL6A/BAF53A and PHF10/BAF45A, are exchanged for homologous alternative ACTL6B/BAF53B and DPF1/BAF45B or DPF3/BAF45C subunits in neuron-specific complexes (nBAF). The npBAF complex is essential for the self-renewal/proliferative capacity of the multipotent neural stem cells. The nBAF complex along with CREST plays a role regulating the activity of genes essential for dendrite growth.

Involvement in disease

Nicolaides-Baraitser syndrome

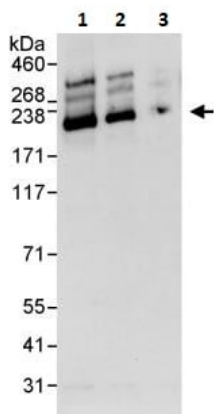
Sequence similarities

Belongs to the SNF2/RAD54 helicase family.
 Contains 1 bromo domain.
 Contains 1 helicase ATP-binding domain.
 Contains 1 helicase C-terminal domain.
 Contains 1 HSA domain.
 Contains 1 QLQ domain.

Cellular localization

Nucleus.

Images



Western blot - Anti-SMARCA2 / BRM antibody
(ab264163)

All lanes : Anti-SMARCA2 / BRM antibody (ab264163) at 0.04 $\mu\text{g/ml}$

Lane 1 : HeLa whole cell lysate at 50 μg

Lane 2 : HeLa whole cell lysate at 15 μg

Lane 3 : HeLa whole cell lysate at 5 μg

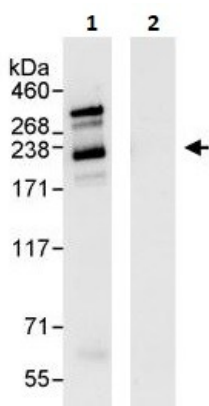
Secondary

All lanes : Goat anti-Rabbit Light Chain HRP Conjugate

Predicted band size: 181 kDa

Exposure time: 10 seconds

4-8% SDS-PAGE



Immunoprecipitation - Anti-SMARCA2 / BRM
antibody (ab264163)

SMARCA2 / BRM was immunoprecipitated from 1mg of HeLa (Human epithelial cell line from cervix adenocarcinoma) whole cell lysate with ab264163 at 3 $\mu\text{g/mg}$ lysate. Western blot was performed from the immunoprecipitate using ab264163 at 1 $\mu\text{g/ml}$.

Lane 1: ab264163 IP in HeLa whole cell lysate.

Lane 2: Control IgG.

Exposure time: 3 secs.

Please note: All products are "FOR RESEARCH USE ONLY. NOT FOR USE IN DIAGNOSTIC PROCEDURES"

Our Abpromise to you: Quality guaranteed and expert technical support

- Replacement or refund for products not performing as stated on the datasheet
- Valid for 12 months from date of delivery
- Response to your inquiry within 24 hours

- We provide support in Chinese, English, French, German, Japanese and Spanish
- Extensive multi-media technical resources to help you
- We investigate all quality concerns to ensure our products perform to the highest standards

If the product does not perform as described on this datasheet, we will offer a refund or replacement. For full details of the Abpromise, please visit <https://www.abcam.com/abpromise> or contact our technical team.

Terms and conditions

- Guarantee only valid for products bought direct from Abcam or one of our authorized distributors