

Product datasheet

Anti-SMCHD1 antibody ab122555

★★★★★ 2 Abreviews 4 References 3 Images

Overview

Product name	Anti-SMCHD1 antibody
Description	Rabbit polyclonal to SMCHD1
Host species	Rabbit
Tested applications	Suitable for: IHC-P, WB, ICC/IF
Species reactivity	Reacts with: Human
Immunogen	antigen sequence: DNGRGMSTKQ LNNWAVYRLS KFTRQGDFES DHSGYVRPVP VPRSLNSDIS YFGVGGKQAV FFVGQSARMI SKPADSQDVH ELVLSKED, corresponding to N terminal amino acids 184-271 of Human SMCHD1. Run BLAST with ExPASy Run BLAST with NCBI
Positive control	WB: U 2 OS and MCF7 cell lysates; IHC-P: Human duodenum tissue; ICC/IF: Human cell like U-2 OS.
General notes	<p>Reproducibility is key to advancing scientific discovery and accelerating scientists' next breakthrough.</p> <p>Abcam is leading the way with our range of recombinant antibodies, knockout-validated antibodies and knockout cell lines, all of which support improved reproducibility.</p> <p>We are also planning to innovate the way in which we present recommended applications and species on our product datasheets, so that only applications & species that have been tested in our own labs, our suppliers or by selected trusted collaborators are covered by our Abpromise™ guarantee.</p> <p>In preparation for this, we have started to update the applications & species that this product is Abpromise guaranteed for.</p> <p>We are also updating the applications & species that this product has been “predicted to work with,” however this information is not covered by our Abpromise guarantee.</p> <p>Applications & species from publications and Abreviews that have not been tested in our own labs or in those of our suppliers are not covered by the Abpromise guarantee.</p> <p>Please check that this product meets your needs before purchasing. If you have any questions, special requirements or concerns, please send us an inquiry and/or contact our Support team ahead of purchase. Recommended alternatives for this product can be found below, as well as customer reviews and Q&As.</p>

Properties

Form	Liquid
Storage instructions	Shipped at 4°C. Upon delivery aliquot and store at -20°C. Avoid freeze / thaw cycles.
Storage buffer	pH: 7.20 Preservative: 0.02% Sodium azide Constituents: 59% PBS, 40% Glycerol (glycerin, glycerine)
Purity	Immunogen affinity purified
Clonality	Polyclonal
Isotype	IgG

Applications

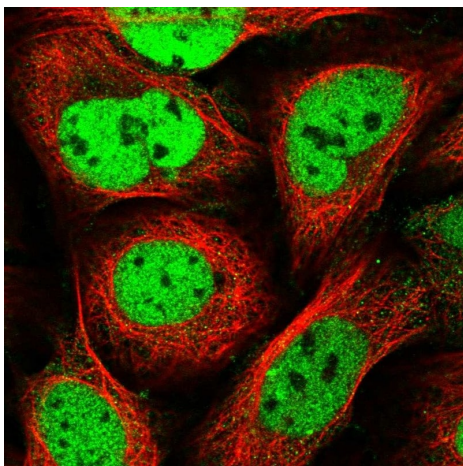
Our [Abpromise guarantee](#) covers the use of **ab122555** in the following tested applications.

The application notes include recommended starting dilutions; optimal dilutions/concentrations should be determined by the end user.

Application	Abreviews	Notes
IHC-P		1/50 - 1/200. Perform heat mediated antigen retrieval with citrate buffer pH 6 before commencing with IHC staining protocol.
WB	★★★★☆	Use a concentration of 0.04 - 0.4 µg/ml.
ICC/IF	★★★★★	Use a concentration of 0.25 - 2 µg/ml.

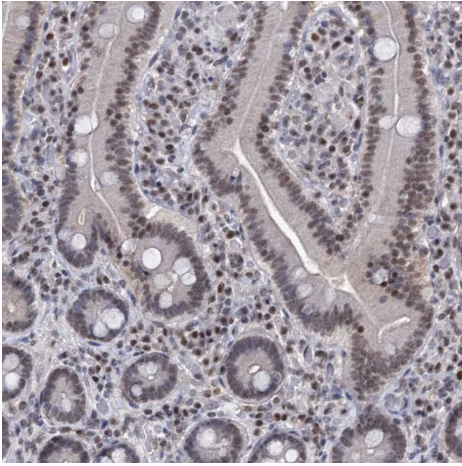
Target

Images



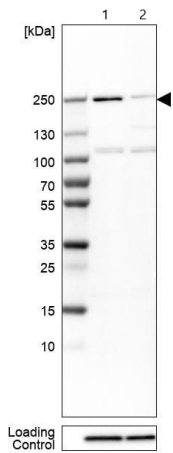
Immunofluorescent staining of Human cell line U-2 OS shows localization to nucleoplasm. Recommended concentration of ab122555 1-4 µg/ml. Cells treated with PFA/Triton X-100.

Immunocytochemistry/ Immunofluorescence - Anti-SMCHD1 antibody (ab122555)



ab122555, at 1/50 dilution, staining SMCHD1 in Paraffin Embedded human duodenum shows nuclear positivity in glandular cells by Immunohistochemistry.

Immunohistochemistry (Formalin/PFA-fixed paraffin-embedded sections) - Anti-SMCHD1 antibody (ab122555)



All lanes : Anti-SMCHD1 antibody (ab122555) at 0.4 µg/ml

Lane 1 : U-2 OS (human bone osteosarcoma epithelial cell line) whole cell lysate

Lane 2 : MCF7 (human breast adenocarcinoma cell line) whole cell lysate

Loading Control: Anti-HDAC1

Western blot - Anti-SMCHD1 antibody (ab122555)

Please note: All products are "FOR RESEARCH USE ONLY. NOT FOR USE IN DIAGNOSTIC PROCEDURES"

Our Abpromise to you: Quality guaranteed and expert technical support

- Replacement or refund for products not performing as stated on the datasheet
- Valid for 12 months from date of delivery
- Response to your inquiry within 24 hours
- We provide support in Chinese, English, French, German, Japanese and Spanish
- Extensive multi-media technical resources to help you
- We investigate all quality concerns to ensure our products perform to the highest standards

If the product does not perform as described on this datasheet, we will offer a refund or replacement. For full details of the Abpromise, please visit <https://www.abcam.com/abpromise> or contact our technical team.

Terms and conditions

- Guarantee only valid for products bought direct from Abcam or one of our authorized distributors