




Product datasheet

Anti-Smoothelin antibody ab204603

5 Images

Overview

<b>Product name</b>	Anti-Smoothelin antibody
<b>Description</b>	Rabbit polyclonal to Smoothelin
<b>Host species</b>	Rabbit
<b>Tested applications</b>	<b>Suitable for:</b> WB, IHC-P
<b>Species reactivity</b>	<b>Reacts with:</b> Human <b>Predicted to work with:</b> Mouse 
<b>Immunogen</b>	Recombinant fragment corresponding to Human Smoothelin aa 433-517. Sequence: PVARSEEPGAPLPVAVGTAEPGGSMKTTFTIEIKDGRGQA STGRVLLPTG NQRAELTLGLRAPPTLLSTSSGGKSTITRVNSPGT  Database link: <a href="#">P53814</a>   <a href="#">Run BLAST with</a>  <a href="#">Run BLAST with</a>
<b>Positive control</b>	WB: RT-4 whole cell lysate; IHC-P: Human prostate and rectum tissue;
<b>General notes</b>	<p>Reproducibility is key to advancing scientific discovery and accelerating scientists' next breakthrough.</p> <p>Abcam is leading the way with our range of recombinant antibodies, knockout-validated antibodies and knockout cell lines, all of which support improved reproducibility.</p> <p>We are also planning to innovate the way in which we present recommended applications and species on our product datasheets, so that only applications &amp; species that have been tested in our own labs, our suppliers or by selected trusted collaborators are covered by our Abpromise™ guarantee.</p> <p>In preparation for this, we have started to update the applications &amp; species that this product is Abpromise guaranteed for.</p> <p>We are also updating the applications &amp; species that this product has been “predicted to work with,” however this information is not covered by our Abpromise guarantee.</p> <p>Applications &amp; species from publications and Abreviews that have not been tested in our own labs or in those of our suppliers are not covered by the Abpromise guarantee.</p> <p>Please check that this product meets your needs before purchasing. If you have any questions, special requirements or concerns, please send us an inquiry and/or contact our Support team ahead of purchase. Recommended alternatives for this product can be found below, as well as</p>

customer reviews and Q&As.

## Properties

---

<b>Form</b>	Liquid
<b>Storage instructions</b>	Shipped at 4°C. Store at +4°C short term (1-2 weeks). Upon delivery aliquot. Store at -20°C long term. Avoid freeze / thaw cycle.
<b>Storage buffer</b>	pH: 7.20 Preservative: 0.02% Sodium azide Constituents: 59% PBS, 40% Glycerol (glycerin, glycerine)
<b>Purity</b>	Immunogen affinity purified
<b>Clonality</b>	Polyclonal
<b>Isotype</b>	IgG

## Applications

---

Our [Abpromise guarantee](#) covers the use of **ab204603** in the following tested applications.

The application notes include recommended starting dilutions; optimal dilutions/concentrations should be determined by the end user.

Application	Abreviews	Notes
WB		Use a concentration of 0.04 - 0.4 µg/ml. Predicted molecular weight: 99 kDa.
IHC-P		1/500 - 1/1000. Perform heat mediated antigen retrieval with citrate buffer pH 6 before commencing with IHC staining protocol.

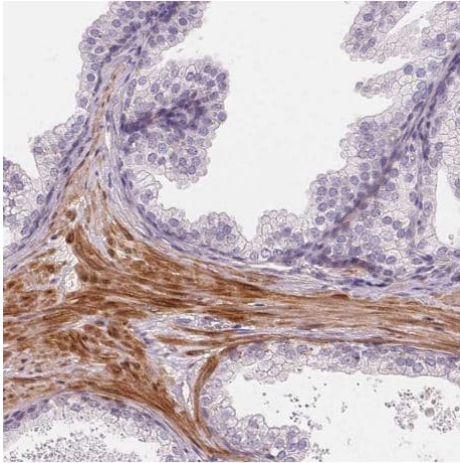
## Target

---

<b>Function</b>	Structural protein of the cytoskeleton.
<b>Tissue specificity</b>	Smooth muscle; contractile or vascular (for the long form).
<b>Sequence similarities</b>	Belongs to the smoothelin family. Contains 1 CH (calponin-homology) domain.
<b>Cellular localization</b>	Cytoplasm > cytoskeleton. Exhibits a filamentous organization.

## Images

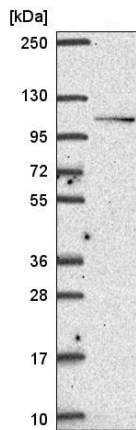
---



Immunohistochemistry (Formalin/PFA-fixed paraffin-embedded sections) - Anti-Smoothelin antibody (ab204603)

Immunohistochemical analysis of human prostate tissue labeling Smoothelin in the cytoplasm of smooth muscle cells with ab204603 at a 1/500 dilution.

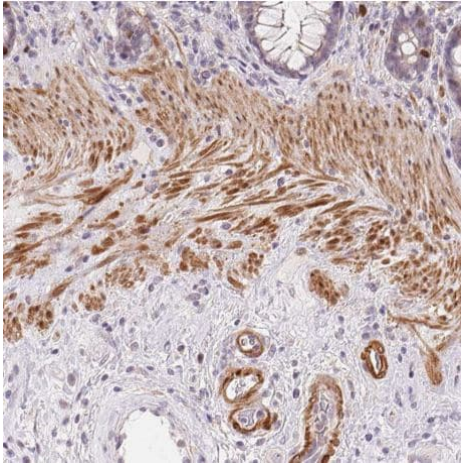
Performed heat mediated antigen retrieval with citrate buffer pH 6 before commencing with IHC staining protocol.



Western blot - Anti-Smoothelin antibody (ab204603)

Anti-Smoothelin antibody (ab204603) at 0.4  $\mu\text{g/ml}$  + RT4 (Human urinary bladder cancer cell line) whole cell lysate

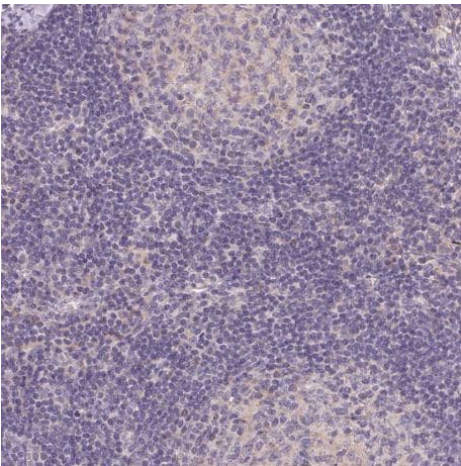
**Predicted band size: 99 kDa**



Immunohistochemistry (Formalin/PFA-fixed paraffin-embedded sections) - Anti-Smoothelin antibody (ab204603)

Immunohistochemical analysis of human rectum tissue labeling Smoothelin in the cytoplasm of smooth muscle cells with ab204603 at a 1/500 dilution.

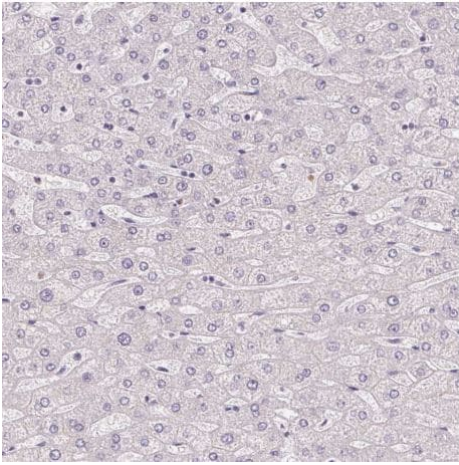
Performed heat mediated antigen retrieval with citrate buffer pH 6 before commencing with IHC staining protocol.



Immunohistochemistry (Formalin/PFA-fixed paraffin-embedded sections) - Anti-Smoothelin antibody (ab204603)

Immunohistochemical analysis of human lymph node tissue labeling Smoothelin with ab204603 at a 1/500 dilution. No positivity as expected.

Performed heat mediated antigen retrieval with citrate buffer pH 6 before commencing with IHC staining protocol.



Immunohistochemistry (Formalin/PFA-fixed paraffin-embedded sections) - Anti-Smoothelin antibody (ab204603)

Immunohistochemical analysis of human liver tissue labeling Smoothelin with ab204603 at a 1/500 dilution. No positivity as expected.

Performed heat mediated antigen retrieval with citrate buffer pH 6 before commencing with IHC staining protocol.

**Please note:** All products are "FOR RESEARCH USE ONLY. NOT FOR USE IN DIAGNOSTIC PROCEDURES"

### Our Abpromise to you: Quality guaranteed and expert technical support

---

- Replacement or refund for products not performing as stated on the datasheet
- Valid for 12 months from date of delivery
- Response to your inquiry within 24 hours
- We provide support in Chinese, English, French, German, Japanese and Spanish
- Extensive multi-media technical resources to help you
- We investigate all quality concerns to ensure our products perform to the highest standards

If the product does not perform as described on this datasheet, we will offer a refund or replacement. For full details of the Abpromise, please visit <https://www.abcam.com/abpromise> or contact our technical team.

### Terms and conditions

---

- Guarantee only valid for products bought direct from Abcam or one of our authorized distributors