


## Product datasheet

# Anti-SNAIL + SLUG antibody [CL3700] - N-terminal ab224731

[1 References](#) [8 Images](#)

### Overview

---

<b>Product name</b>	Anti-SNAIL + SLUG antibody [CL3700] - N-terminal
<b>Description</b>	Mouse monoclonal [CL3700] to SNAIL + SLUG - N-terminal
<b>Host species</b>	Mouse
<b>Tested applications</b>	<b>Suitable for:</b> IHC-P, ICC/IF
<b>Species reactivity</b>	<b>Reacts with:</b> Human <b>Predicted to work with:</b> Mouse 
<b>Immunogen</b>	Recombinant fragment aa 1-100 (N terminal). Corresponding to Human SNAIL. Database link: <a href="#">O95863</a> <a href="#">Run BLAST with</a> <a href="#">Run BLAST with</a>
<b>Positive control</b>	IHC-P: Human colorectal cancer, breast cancer, fallopian tube, colon, testis, cortex and prostate tissues. ICC/IF: BeWo cells.
<b>General notes</b>	<p>The Life Science industry has been in the grips of a reproducibility crisis for a number of years. Abcam is leading the way in addressing this with our range of recombinant monoclonal antibodies and knockout edited cell lines for gold-standard validation. Please check that this product meets your needs before purchasing.</p> <p>If you have any questions, special requirements or concerns, please send us an inquiry and/or contact our Support team ahead of purchase. Recommended alternatives for this product can be found below, along with publications, customer reviews and Q&amp;As</p>

### Properties

---

<b>Form</b>	Liquid
<b>Storage instructions</b>	Shipped at 4°C. Store at +4°C short term (1-2 weeks). Upon delivery aliquot. Store at -20°C long term. Avoid freeze / thaw cycle.
<b>Storage buffer</b>	pH: 7.20 Preservative: 0.02% Sodium azide Constituents: 40% Glycerol (glycerin, glycerine), PBS
<b>Purity</b>	Protein A purified
<b>Purification notes</b>	Purified from TCS.

<b>Clonality</b>	Monoclonal
<b>Clone number</b>	CL3700
<b>Isotype</b>	IgG1

## Applications

**The Abpromise guarantee** Our [Abpromise guarantee](#) covers the use of ab224731 in the following tested applications. The application notes include recommended starting dilutions; optimal dilutions/concentrations should be determined by the end user.

Application	Abreviews	Notes
IHC-P		1/5000 - 1/10000. Perform heat mediated antigen retrieval with citrate buffer pH 6 before commencing with IHC staining protocol.
ICC/IF		Use a concentration of 2 - 10 µg/ml. Fixation/Permeabilization: PFA/Triton X-100

## Target

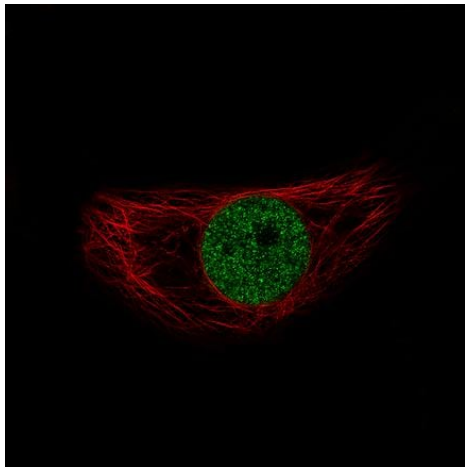
### Relevance

Function: SNAIL is involved in the epithelial to mesenchymal transition (EMT) and formation and maintenance of embryonic mesoderm (By similarity). Binds to 3 E-boxes of the E-cadherin gene promoter and represses its transcription. SLUG is a transcriptional repressor, involved in the generation and migration of neural crest cells. PTM: SNAIL is phosphorylated by GSK3B. Once phosphorylated, it becomes a target for BTRC ubiquitination. Ubiquitinated on Lys-98, Lys-137 and Lys-146 by FBXL14 and BTRC leading to degradation. BTRC-triggered ubiquitination requires previous GSK3B-mediated SNAI1 phosphorylation. Similarity: Both SNAIL and SLUG belong to the snail C2H2-type zinc-finger protein family. Tissue specificity: SNAIL is expressed in a variety of tissues with the highest expression in kidney. Expressed in mesenchymal and epithelial cell lines. SLUG is expressed in placenta and adult heart, pancreas, liver, kidney and skeletal muscle.

### Cellular localization

Slug is generally nuclear, while Snail is known to be both cytoplasmic and nuclear. Once phosphorylated (probably on Ser-107, Ser-111, Ser-115 and Ser-119) snail is exported from the nucleus to the cytoplasm where subsequent phosphorylation of the destruction motif and ubiquitination involving BTRC occurs.

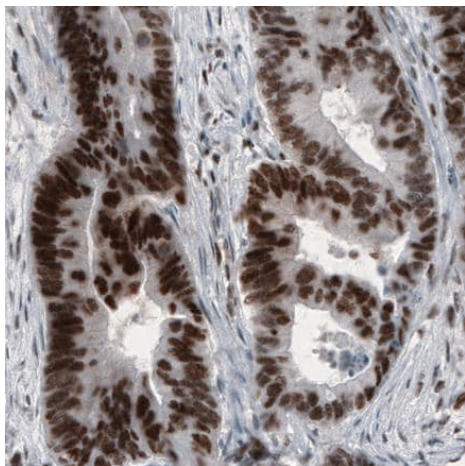
## Images



Immunocytochemistry/ Immunofluorescence - Anti-SNAIL + SLUG antibody [CL3700] - N-terminal (ab224731)

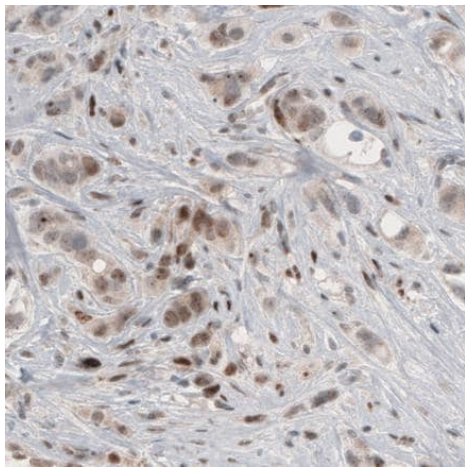
PFA-fixed, Triton X-100 permeabilized BeWo cells stained for SNAIL1 (Green) using ab224731 at 4  $\mu\text{g}/\text{ml}$  in ICC/IF.

Microtubules are stained red.



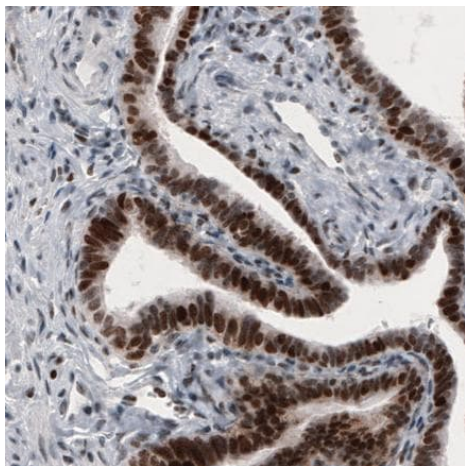
Immunohistochemistry (Formalin/PFA-fixed paraffin-embedded sections) - Anti-SNAIL + SLUG antibody [CL3700] - N-terminal (ab224731)

Paraffin-embedded human colorectal cancer tissue stained for SNAIL using ab224731 at 1/5000 dilution in immunohistochemical analysis.



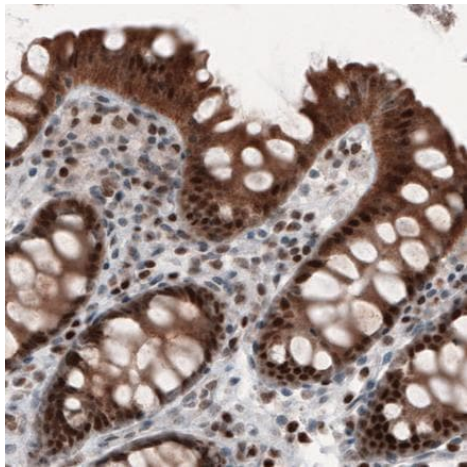
Paraffin-embedded human breast cancer tissue stained for SNAIL using ab224731 at 1/5000 dilution in immunohistochemical analysis.

Immunohistochemistry (Formalin/PFA-fixed paraffin-embedded sections) - Anti-SNAIL + SLUG antibody [CL3700] - N-terminal (ab224731)



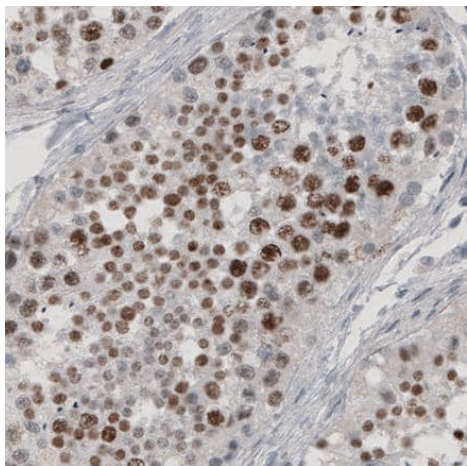
Paraffin-embedded human fallopian tube tissue stained for SNAIL using ab224731 at 1/5000 dilution in immunohistochemical analysis.

Immunohistochemistry (Formalin/PFA-fixed paraffin-embedded sections) - Anti-SNAIL + SLUG antibody [CL3700] - N-terminal (ab224731)



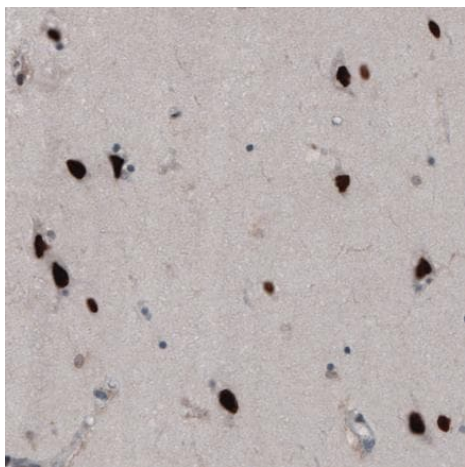
Immunohistochemistry (Formalin/PFA-fixed paraffin-embedded sections) - Anti-SNAIL + SLUG antibody [CL3700] - N-terminal (ab224731)

Paraffin-embedded human colon tissue stained for SNAIL using ab224731 at 1/5000 dilution in immunohistochemical analysis.



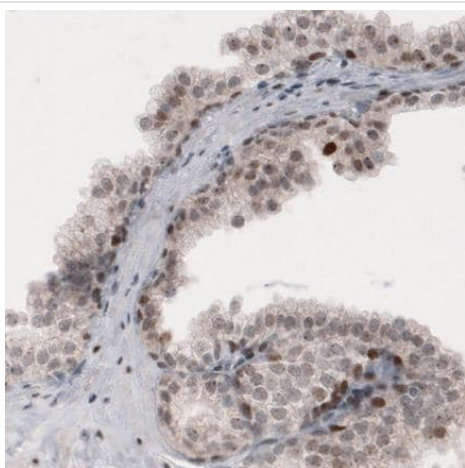
Immunohistochemistry (Formalin/PFA-fixed paraffin-embedded sections) - Anti-SNAIL + SLUG antibody [CL3700] - N-terminal (ab224731)

Paraffin-embedded human testis tissue stained for SNAIL using ab224731 at 1/5000 dilution in immunohistochemical analysis.



Paraffin-embedded human cortex tissue stained for SNAIL using ab224731 at 1/5000 dilution in immunohistochemical analysis.

Immunohistochemistry (Formalin/PFA-fixed paraffin-embedded sections) - Anti-SNAIL + SLUG antibody [CL3700] - N-terminal (ab224731)



Paraffin-embedded human prostate tissue stained for SNAIL using ab224731 at 1/5000 dilution in immunohistochemical analysis.

Immunohistochemistry (Formalin/PFA-fixed paraffin-embedded sections) - Anti-SNAIL + SLUG antibody [CL3700] - N-terminal (ab224731)

**Please note:** All products are "FOR RESEARCH USE ONLY. NOT FOR USE IN DIAGNOSTIC PROCEDURES"

### **Our Abpromise to you: Quality guaranteed and expert technical support**

---

- Replacement or refund for products not performing as stated on the datasheet
- Valid for 12 months from date of delivery
- Response to your inquiry within 24 hours

- We provide support in Chinese, English, French, German, Japanese and Spanish
- Extensive multi-media technical resources to help you
- We investigate all quality concerns to ensure our products perform to the highest standards

If the product does not perform as described on this datasheet, we will offer a refund or replacement. For full details of the Abpromise, please visit <https://www.abcam.com/abpromise> or contact our technical team.

### **Terms and conditions**

---

- Guarantee only valid for products bought direct from Abcam or one of our authorized distributors