

## Product datasheet

# Anti-SNAPIN antibody ab37496

[3 References](#) [1 Image](#)

### Overview

---

<b>Product name</b>	Anti-SNAPIN antibody
<b>Description</b>	Chicken polyclonal to SNAPIN
<b>Host species</b>	Chicken
<b>Tested applications</b>	<b>Suitable for:</b> WB
<b>Species reactivity</b>	<b>Reacts with:</b> Mouse, Rat, Human
<b>Immunogen</b>	Synthetic peptide, corresponding to amino acids 31-136 of Human SNAPIN
<b>Positive control</b>	Brain tissue
<b>General notes</b>	<p>Reproducibility is key to advancing scientific discovery and accelerating scientists' next breakthrough.</p> <p>Abcam is leading the way with our range of recombinant antibodies, knockout-validated antibodies and knockout cell lines, all of which support improved reproducibility.</p> <p>We are also planning to innovate the way in which we present recommended applications and species on our product datasheets, so that only applications &amp; species that have been tested in our own labs, our suppliers or by selected trusted collaborators are covered by our Abpromise™ guarantee.</p> <p>In preparation for this, we have started to update the applications &amp; species that this product is Abpromise guaranteed for.</p> <p>We are also updating the applications &amp; species that this product has been “predicted to work with,” however this information is not covered by our Abpromise guarantee.</p> <p>Applications &amp; species from publications and Abreviews that have not been tested in our own labs or in those of our suppliers are not covered by the Abpromise guarantee.</p> <p>Please check that this product meets your needs before purchasing. If you have any questions, special requirements or concerns, please send us an inquiry and/or contact our Support team ahead of purchase. Recommended alternatives for this product can be found below, as well as customer reviews and Q&amp;As.</p>

### Properties

---

<b>Form</b>	Liquid
<b>Storage instructions</b>	Shipped at 4°C. Store at +4°C short term (1-2 weeks). Upon delivery aliquot. Store at -20°C or -80°C. Avoid freeze / thaw cycle.

<b>Storage buffer</b>	Constituent: PBS
<b>Purity</b>	Immunogen affinity purified
<b>Clonality</b>	Polyclonal
<b>Isotype</b>	IgY

## Applications

Our [Abpromise guarantee](#) covers the use of **ab37496** in the following tested applications.

The application notes include recommended starting dilutions; optimal dilutions/concentrations should be determined by the end user.

Application	Abreviews	Notes
WB		1/2000. Detects a band of approximately 70 kDa for the fusion protein (predicted molecular weight for the native protein: 15 kDa).

## Target

**Function** May modulate a step between vesicle priming, fusion and calcium-dependent neurotransmitter release by potentiating the interaction of synaptotagmins with the SNAREs and the plasma-membrane-associated protein SNAP25. Its phosphorylation state influences exocytotic protein interactions and may regulate synaptic vesicle exocytosis. May also have a role in the mechanisms of SNARE-mediated membrane fusion in non-neuronal cells.

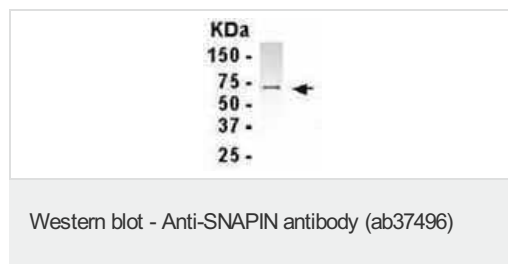
**Tissue specificity** Expressed in male germ cells of adult testis (at protein level).

**Sequence similarities** Belongs to the SNAPIN family.

**Developmental stage** Expressed in germ cells of 22-week prenatal testis.

**Cellular localization** Cytoplasm. Membrane. Cytoplasmic vesicle membrane. Cytoplasmic vesicle > secretory vesicle > synaptic vesicle membrane. Cell junction > synapse > synaptosome. Cytoplasm > perinuclear region. May be cytoplasmic and peripheral membrane bound or anchored to the vesicular membrane through an N-terminal signal anchor (By similarity). Co-localizes with NANOS1 and PUM2 in the perinuclear region of germ cells.

## Images



Anti-SNAPIN antibody (ab37496) at 1/2000 dilution + E. coli derived fusion protein at 2.5 µg

### Secondary

Goat anti IgY HRP at 1/1000 dilution

**Observed band size:** 70 kDa

[why is the actual band size different from the predicted?](#)

Band size larger than expected as a fusion protein was used as positive control.

**Please note:** All products are "FOR RESEARCH USE ONLY. NOT FOR USE IN DIAGNOSTIC PROCEDURES"

### **Our Abpromise to you: Quality guaranteed and expert technical support**

---

- Replacement or refund for products not performing as stated on the datasheet
- Valid for 12 months from date of delivery
- Response to your inquiry within 24 hours
- We provide support in Chinese, English, French, German, Japanese and Spanish
- Extensive multi-media technical resources to help you
- We investigate all quality concerns to ensure our products perform to the highest standards

If the product does not perform as described on this datasheet, we will offer a refund or replacement. For full details of the Abpromise, please visit <https://www.abcam.com/abpromise> or contact our technical team.

### **Terms and conditions**

---

- Guarantee only valid for products bought direct from Abcam or one of our authorized distributors