


## Product datasheet

# Anti-SND1 antibody ab225620

3 Images

### Overview

---

<b>Product name</b>	Anti-SND1 antibody
<b>Description</b>	Rabbit polyclonal to SND1
<b>Host species</b>	Rabbit
<b>Tested applications</b>	<b>Suitable for:</b> IHC-P, IP, WB
<b>Species reactivity</b>	<b>Reacts with:</b> Mouse, Human <b>Predicted to work with:</b> Rat, Orangutan 
<b>Immunogen</b>	Synthetic peptide within Human SND1 aa 100-150. The exact sequence is proprietary. (NP_055205). Database link: <a href="#">Q7KZF4</a>
<b>Positive control</b>	WB: HeLa, HEK-293T and NIH/3T3 whole cell lysates. IP: HeLa whole cell lysate ( <a href="#">ab150035</a> ). IHC-P: Human lung carcinoma tissue.
<b>General notes</b>	<p>Reproducibility is key to advancing scientific discovery and accelerating scientists' next breakthrough.</p> <p>Abcam is leading the way with our range of recombinant antibodies, knockout-validated antibodies and knockout cell lines, all of which support improved reproducibility.</p> <p>We are also planning to innovate the way in which we present recommended applications and species on our product datasheets, so that only applications &amp; species that have been tested in our own labs, our suppliers or by selected trusted collaborators are covered by our Abpromise™ guarantee.</p> <p>In preparation for this, we have started to update the applications &amp; species that this product is Abpromise guaranteed for.</p> <p>We are also updating the applications &amp; species that this product has been “predicted to work with,” however this information is not covered by our Abpromise guarantee.</p> <p>Applications &amp; species from publications and Abreviews that have not been tested in our own labs or in those of our suppliers are not covered by the Abpromise guarantee.</p> <p>Please check that this product meets your needs before purchasing. If you have any questions, special requirements or concerns, please send us an inquiry and/or contact our Support team ahead of purchase. Recommended alternatives for this product can be found below, as well as customer reviews and Q&amp;As.</p>

### Properties

## Properties

<b>Form</b>	Liquid
<b>Storage instructions</b>	Shipped at 4°C. Store at +4°C short term (1-2 weeks). Upon delivery aliquot. Store at -20°C long term. Avoid freeze / thaw cycle.
<b>Storage buffer</b>	pH: 6.8 Preservative: 0.09% Sodium azide Constituents: 0.1% BSA, Tris buffered saline
<b>Purity</b>	Immunogen affinity purified
<b>Purification notes</b>	ab225620 was affinity purified using an epitope specific to SND1 immobilized on solid support.
<b>Clonality</b>	Polyclonal
<b>Isotype</b>	IgG

## Applications

Our [Abpromise guarantee](#) covers the use of **ab225620** in the following tested applications.

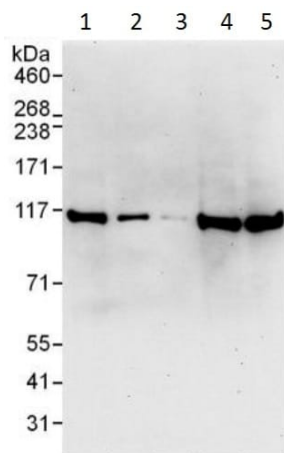
The application notes include recommended starting dilutions; optimal dilutions/concentrations should be determined by the end user.

Application	Abreviews	Notes
IHC-P		1/100 - 1/500. Perform heat mediated antigen retrieval with citrate buffer pH 6 before commencing with IHC staining protocol.
IP		Use at 2-5 µg/mg of lysate.
WB		1/2000 - 1/10000. Predicted molecular weight: 102 kDa.

## Target

<b>Function</b>	Functions as a bridging factor between STAT6 and the basal transcription factor. Plays a role in PIM1 regulation of MYB activity. Functions as a transcriptional coactivator for the Epstein-Barr virus nuclear antigen 2 (EBNA2).
<b>Tissue specificity</b>	Ubiquitously expressed.
<b>Sequence similarities</b>	Contains 4 TNase-like domains. Contains 1 Tudor domain.
<b>Post-translational modifications</b>	Phosphorylated by PIM1 in vitro.
<b>Cellular localization</b>	Cytoplasm. Nucleus. Melanosome. In IL-4 stimulated cells colocalizes with STAT6 in the nucleus. Identified by mass spectrometry in melanosome fractions from stage I to stage IV.

## Images



Western blot - Anti-SND1 antibody (ab225620)

**All lanes :** Anti-SND1 antibody (ab225620) at 0.04 µg/ml

**Lane 1 :** HeLa (human epithelial cell line from cervix adenocarcinoma) whole cell lysate at 50 µg

**Lane 2 :** HeLa (human epithelial cell line from cervix adenocarcinoma) whole cell lysate at 15 µg

**Lane 3 :** HeLa (human epithelial cell line from cervix adenocarcinoma) whole cell lysate at 5 µg

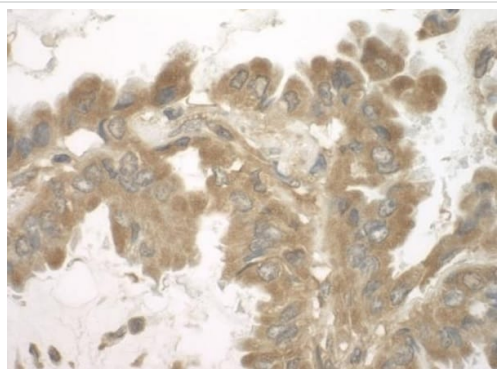
**Lane 4 :** HEK-293T (human epithelial cell line from embryonic kidney transformed with large T antigen) whole cell lysate at 50 µg

**Lane 5 :** NIH/3T3 (mouse embryo fibroblast cell line) whole cell lysate at 50 µg

Developed using the ECL technique.

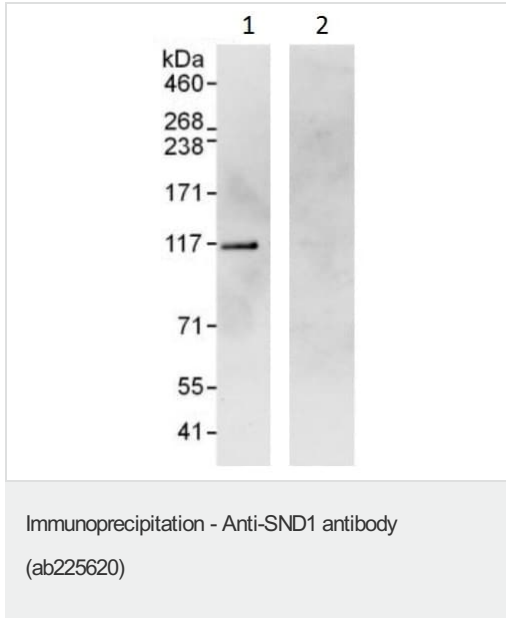
**Predicted band size:** 102 kDa

**Exposure time:** 30 seconds



Immunohistochemistry (Formalin/PFA-fixed paraffin-embedded sections) - Anti-SND1 antibody (ab225620)

Formalin fixed, paraffin embedded human lung carcinoma tissue stained for SND1 using ab225620 at 1/200 dilution in immunohistochemical analysis. Detection: DAB staining.



SND1 was immunoprecipitated from HeLa (human epithelial cell line from cervix adenocarcinoma) whole cell lysate (1 mg for IP, 20% of IP loaded) with ab225620 at 3 µg/mg lysate. Western blot was performed from the immunoprecipitate using ab225620 at 0.4 µg/ml.

Lane 1: ab225620 IP in HeLa whole cell lysate.

Lane 2: Control IgG IP in HeLa whole cell lysate.

Detection: Chemiluminescence with exposure time of 10 seconds.

**Please note:** All products are "FOR RESEARCH USE ONLY. NOT FOR USE IN DIAGNOSTIC PROCEDURES"

### Our Abpromise to you: Quality guaranteed and expert technical support

- Replacement or refund for products not performing as stated on the datasheet
- Valid for 12 months from date of delivery
- Response to your inquiry within 24 hours
- We provide support in Chinese, English, French, German, Japanese and Spanish
- Extensive multi-media technical resources to help you
- We investigate all quality concerns to ensure our products perform to the highest standards

If the product does not perform as described on this datasheet, we will offer a refund or replacement. For full details of the Abpromise, please visit <https://www.abcam.com/abpromise> or contact our technical team.

### Terms and conditions

- Guarantee only valid for products bought direct from Abcam or one of our authorized distributors