


Product datasheet

Anti-Snx6 antibody ab131010

[2 Images](#)

Overview

Product name	Anti-Snx6 antibody
Description	Rabbit polyclonal to Snx6
Host species	Rabbit
Tested applications	Suitable for: WB
Species reactivity	Reacts with: Human Predicted to work with: Mouse, Rat, Rabbit, Horse, Chicken, Guinea pig, Cow, Cat, Dog, Zebrafish 
Immunogen	Synthetic peptide corresponding to a region within C terminal amino acids 312-361 (LRESQAAKDL LYRRSRSLVD YENANKALDK ARAKNKDV LQ AETSQQLCCQ) of Human Snx6 (NP_689419). Run BLAST with ExPASy Run BLAST with NCBI
Positive control	Human placenta lysate.

Properties

Form	Liquid
Storage instructions	Shipped at 4°C. Upon delivery aliquot and store at -20°C. Avoid repeated freeze / thaw cycles.
Storage buffer	Preservative: 0.09% Sodium azide Constituents: 2% Sucrose, PBS
Purity	Immunogen affinity purified
Clonality	Polyclonal
Isotype	IgG

Applications

Our [Abpromise guarantee](#) covers the use of **ab131010** in the following tested applications.

The application notes include recommended starting dilutions; optimal dilutions/concentrations should be determined by the end user.

Application	Abreviews	Notes
WB		Use a concentration of 1 µg/ml. Predicted molecular weight: 48 kDa.

Target

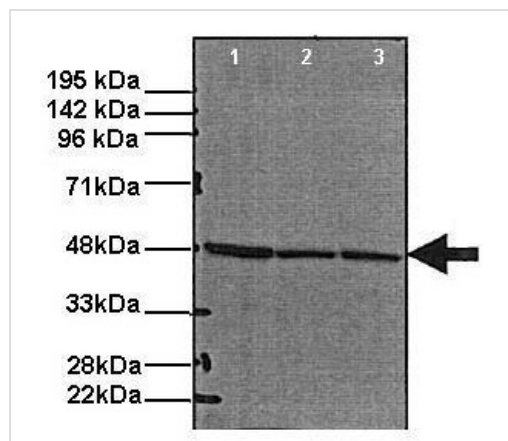
Relevance

Snx6 is a member of the sorting nexin family. Members of this family contain a phox (PX) domain, which is a phosphoinositide binding domain, and are involved in intracellular trafficking. This protein associates with the long isoform of the leptin receptor, the transforming growth factor-beta family of receptor serine-threonine kinases, and with receptor tyrosine kinases for platelet-derived growth factor, insulin, and epidermal growth factor. This protein may form oligomeric complexes with family member proteins through interactions of both the PX domain and the coiled coil regions of the molecules. Translocation of this protein from the cytoplasm to the nucleus occurs after binding to proviral integration site 1 protein. This gene results in two transcripts encoding two distinct isoforms.

Cellular localization

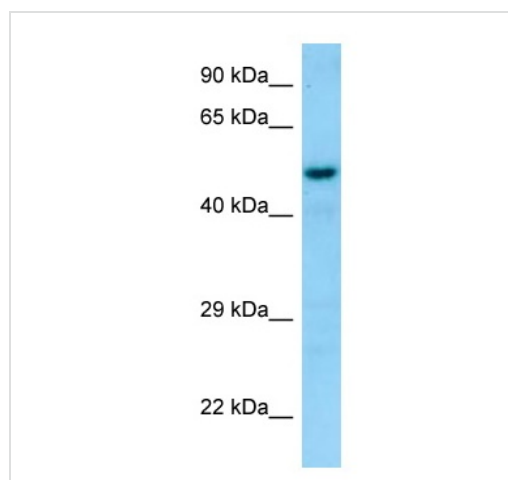
Endosomes

Images



Western blot - Anti-Snx6 antibody (ab131010)

Western blot analysis of HeLa (lane 1) NIH3T3 (lane 2) and IHKE1 (lane 3) cell lysates (40µg/lane) labeling Snx6 with ab131010 at 1:1000. A HRP-conjugated Goat anti-rabbit IgG (1:1000) was used as the secondary antibody.



Western blot - Anti-Snx6 antibody (ab131010)

Anti-Snx6 antibody (ab131010) at 1 µg/ml + Human placenta lysate at 10 µg

Predicted band size: 48 kDa

Our Abpromise to you: Quality guaranteed and expert technical support

- Replacement or refund for products not performing as stated on the datasheet
- Valid for 12 months from date of delivery
- Response to your inquiry within 24 hours

- We provide support in Chinese, English, French, German, Japanese and Spanish
- Extensive multi-media technical resources to help you
- We investigate all quality concerns to ensure our products perform to the highest standards

If the product does not perform as described on this datasheet, we will offer a refund or replacement. For full details of the Abpromise, please visit <https://www.abcam.com/abpromise> or contact our technical team.

Terms and conditions

- Guarantee only valid for products bought direct from Abcam or one of our authorized distributors