

Product datasheet

# Anti-Sodium Iodide Symporter antibody - N-terminal ab199410

[1 References](#)   [1 Image](#)

Overview

---

<b>Product name</b>	Anti-Sodium Iodide Symporter antibody - N-terminal
<b>Description</b>	Rabbit polyclonal to Sodium Iodide Symporter - N-terminal
<b>Host species</b>	Rabbit
<b>Specificity</b>	ab199410 detects endogenous level of total Sodium Iodide Symporter protein.
<b>Tested applications</b>	<b>Suitable for:</b> WB
<b>Species reactivity</b>	<b>Reacts with:</b> Human
<b>Immunogen</b>	Synthetic peptide within Human Sodium Iodide Symporter (N terminal). The exact sequence is proprietary. NCBI Accession No. NP_000444 Database link: <a href="#">Q92911</a>
<b>Positive control</b>	Human colon and ovarian cancer tissue lysates.

Properties

---

<b>Form</b>	Liquid
<b>Storage instructions</b>	Shipped at 4°C. Store at +4°C short term (1-2 weeks). Upon delivery aliquot. Store at -20°C long term. Avoid freeze / thaw cycle.
<b>Storage buffer</b>	pH: 7.3 Preservative: 0.05% Sodium azide Constituents: 50% Glycerol, 49% PBS
<b>Purity</b>	Immunogen affinity purified
<b>Clonality</b>	Polyclonal
<b>Isotype</b>	IgG

Applications

---

Our [Abpromise guarantee](#) covers the use of **ab199410** in the following tested applications.

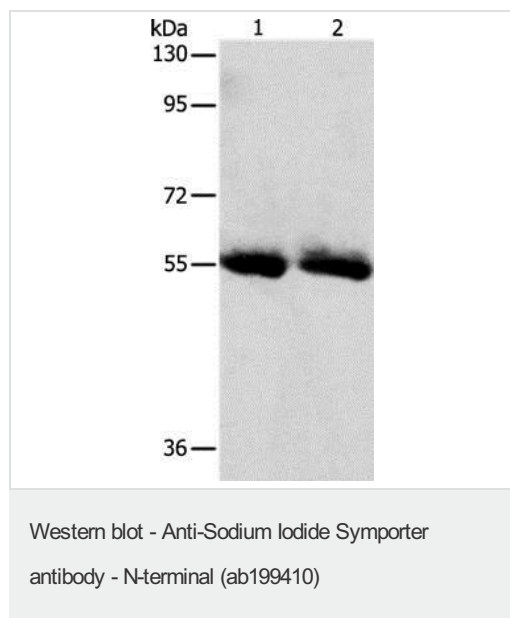
The application notes include recommended starting dilutions; optimal dilutions/concentrations should be determined by the end user.

Application	Abreviews	Notes
WB		1/450 - 1/2000. Predicted molecular weight: 69 kDa.

## Target

<b>Function</b>	Mediates iodide uptake in the thyroid gland.
<b>Tissue specificity</b>	Expression is primarily in thyroid tissue, but also to a lower extent in mammary gland and ovary. Expression is reduced in tumors.
<b>Involvement in disease</b>	Thyroid dysmorphogenesis 1
<b>Sequence similarities</b>	Belongs to the sodium:solute symporter (SSF) (TC 2.A.21) family.
<b>Cellular localization</b>	Membrane.

## Images



**All lanes** : Anti-Sodium Iodide Symporter antibody - N-terminal (ab199410) at 1/450 dilution

**Lane 1** : Human colon cancer lysate

**Lane 2** : Human ovarian cancer lysate

Lysates/proteins at 40 µg per lane.

**Predicted band size:** 69 kDa

8%SDS-PAGE

**Please note:** All products are "FOR RESEARCH USE ONLY. NOT FOR USE IN DIAGNOSTIC PROCEDURES"

## Our Promise to you: Quality guaranteed and expert technical support

- Replacement or refund for products not performing as stated on the datasheet
- Valid for 12 months from date of delivery
- Response to your inquiry within 24 hours
- We provide support in Chinese, English, French, German, Japanese and Spanish
- Extensive multi-media technical resources to help you
- We investigate all quality concerns to ensure our products perform to the highest standards

If the product does not perform as described on this datasheet, we will offer a refund or replacement. For full details of the Abpromise, please visit <https://www.abcam.com/abpromise> or contact our technical team.

### **Terms and conditions**

---

- Guarantee only valid for products bought direct from Abcam or one of our authorized distributors