

Product datasheet

Anti-Sohlh1 antibody ab41520

★ ★ ★ ★ ★
[3 Abreviews](#)
[3 References](#)
[2 Images](#)

Overview

Product name	Anti-Sohlh1 antibody
Description	Rabbit polyclonal to Sohlh1
Host species	Rabbit
Tested applications	Suitable for: ICC/IF, WB
Species reactivity	Reacts with: Mouse
Immunogen	Synthetic peptide conjugated to KLH derived from within residues 1 - 100 of Mouse Sohlh1. Read Abcam's proprietary immunogen policy (Peptide available as ab42012 .)
Positive control	This antibody gave a positive signal in the following Mouse Tissue lysates: Fetus (14 Day Old), Ovary (data not shown)
General notes	<p>Reproducibility is key to advancing scientific discovery and accelerating scientists' next breakthrough.</p> <p>Abcam is leading the way with our range of recombinant antibodies, knockout-validated antibodies and knockout cell lines, all of which support improved reproducibility.</p> <p>We are also planning to innovate the way in which we present recommended applications and species on our product datasheets, so that only applications & species that have been tested in our own labs, our suppliers or by selected trusted collaborators are covered by our Abpromise™ guarantee.</p> <p>In preparation for this, we have started to update the applications & species that this product is Abpromise guaranteed for.</p> <p>We are also updating the applications & species that this product has been "predicted to work with," however this information is not covered by our Abpromise guarantee.</p> <p>Applications & species from publications and Abreviews that have not been tested in our own labs or in those of our suppliers are not covered by the Abpromise guarantee.</p> <p>Please check that this product meets your needs before purchasing. If you have any questions, special requirements or concerns, please send us an inquiry and/or contact our Support team ahead of purchase. Recommended alternatives for this product can be found below, as well as customer reviews and Q&As.</p>

Properties

Form	Liquid
-------------	--------

Storage instructions	Shipped at 4°C. Store at +4°C short term (1-2 weeks). Upon delivery aliquot. Store at -20°C or -80°C. Avoid freeze / thaw cycle.
Storage buffer	pH: 7.40 Preservative: 0.02% Sodium azide Constituent: PBS
	Batches of this product that have a concentration < 1mg/ml may have BSA added as a stabilising agent. If you would like information about the formulation of a specific lot, please contact our scientific support team who will be happy to help.
Purity	Immunogen affinity purified
Clonality	Polyclonal
Isotype	IgG

Applications

Our [Abpromise guarantee](#) covers the use of **ab41520** in the following tested applications.

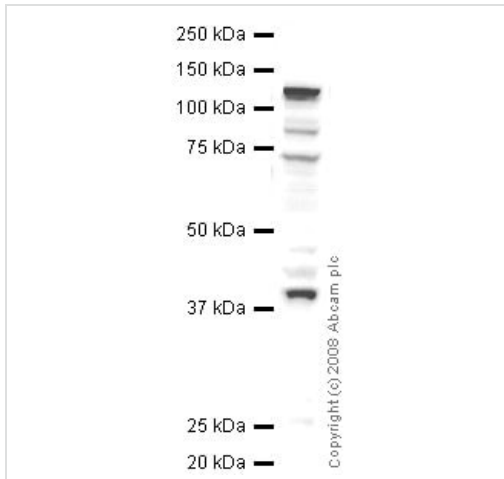
The application notes include recommended starting dilutions; optimal dilutions/concentrations should be determined by the end user.

Application	Abreviews	Notes
ICC/IF	★★★★☆	Use at an assay dependent concentration.
WB		Use a concentration of 2 µg/ml. Detects a band of approximately 38 kDa (predicted molecular weight: 38 kDa).

Target

Function	Probable transcription factor required during spermatogenesis and oogenesis.
Involvement in disease	Note=Genetic variations in SOHLH1 may be associated with non-obstructive azoospermia.
Sequence similarities	Contains 1 basic helix-loop-helix (bHLH) domain.
Cellular localization	Cytoplasm. Nucleus.

Images



Western blot - Anti-Sohlh1 antibody (ab41520)

Anti-Sohlh1 antibody (ab41520) at 2 µg/ml + Mouse Fetus (14 Day Old) Tissue Lysate at 20 µg

Secondary

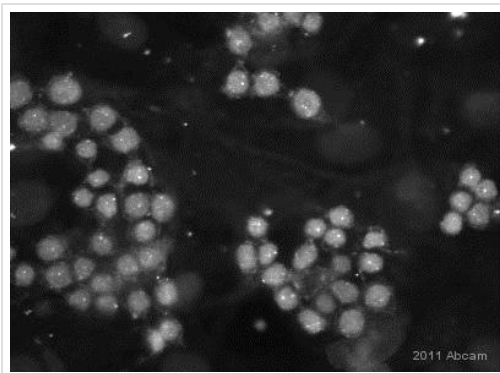
Goat polyclonal to rabbit IgG - H&L - Pre Adsorbed (HRP) at 1/3000 dilution

Performed under reducing conditions.

Predicted band size: 38 kDa

Observed band size: 38 kDa

Additional bands at: 130 kDa, 73 kDa, 85 kDa. We are unsure as to the identity of these extra bands.



Immunocytochemistry/ Immunofluorescence - Anti-Sohlh1 antibody (ab41520)

Image courtesy of an anonymous Abreview.

ab41520 staining Sohlh1 in *in vitro* cultures of murine spermatogonia by Immunocytochemistry/ Immunofluorescence. Cells were fixed in paraformaldehyde, permeabilized using 0.1% Triton X-100, blocked with a blocking agent for 1 hour at 25°C and then incubated with ab41520 at a 1/50 dilution for 20 hours at 4°C. The secondary used was an Alexa-Fluor 488 conjugated chicken anti-rabbit polyclonal, used at a 1/500 dilution.

Please note: All products are "FOR RESEARCH USE ONLY. NOT FOR USE IN DIAGNOSTIC PROCEDURES"

Our Abpromise to you: Quality guaranteed and expert technical support

- Replacement or refund for products not performing as stated on the datasheet
- Valid for 12 months from date of delivery

- Response to your inquiry within 24 hours
- We provide support in Chinese, English, French, German, Japanese and Spanish
- Extensive multi-media technical resources to help you
- We investigate all quality concerns to ensure our products perform to the highest standards

If the product does not perform as described on this datasheet, we will offer a refund or replacement. For full details of the Abpromise, please visit <https://www.abcam.com/abpromise> or contact our technical team.

Terms and conditions

- Guarantee only valid for products bought direct from Abcam or one of our authorized distributors