

Product datasheet

Anti-Somatostatin 28 antibody [EPR3360(2)] ab111050

Recombinant RabMAb

3 Images

Overview

Product name	Anti-Somatostatin 28 antibody [EPR3360(2)]
Description	Rabbit monoclonal [EPR3360(2)] to Somatostatin 28
Host species	Rabbit
Specificity	The immunogen sequence used for this product covers Somatostatin 14 sequence which is an active form of Somatostatin. Cross-reactivity with this protein has not been confirmed experimentally.
Tested applications	Suitable for: ELISA, IHC-P Unsuitable for: WB
Species reactivity	Reacts with: Human
Immunogen	within Human Somatostatin 28 aa 100-200. The exact sequence is proprietary.
Positive control	Human pancreas tissue.
General notes	

This product is a recombinant monoclonal antibody, which offers several advantages including:

- High batch-to-batch consistency and reproducibility
- Improved sensitivity and specificity
- Long-term security of supply
- Animal-free production

For more information [see here](#).

Our RabMAb[®] technology is a patented hybridoma-based technology for making rabbit monoclonal antibodies. For details on our patents, please refer to [RabMAb[®] patents](#).

Reproducibility is key to advancing scientific discovery and accelerating scientists' next breakthrough.

Abcam is leading the way with our range of recombinant antibodies, knockout-validated antibodies and knockout cell lines, all of which support improved reproducibility.

We are also planning to innovate the way in which we present recommended applications and species on our product datasheets, so that only applications & species that have been tested in our own labs, our suppliers or by selected trusted collaborators are covered by our Abpromise[™] guarantee.

In preparation for this, we have started to update the applications & species that this product is

Abpromise guaranteed for.

We are also updating the applications & species that this product has been “predicted to work with,” however this information is not covered by our Abpromise guarantee.

Applications & species from publications and Abreviews that have not been tested in our own labs or in those of our suppliers are not covered by the Abpromise guarantee.

Please check that this product meets your needs before purchasing. If you have any questions, special requirements or concerns, please send us an inquiry and/or contact our Support team ahead of purchase. Recommended alternatives for this product can be found below, as well as customer reviews and Q&As.

Properties

Form	Liquid
Storage instructions	Shipped at 4°C. Store at -20°C. Stable for 12 months at -20°C.
Storage buffer	pH: 7.20 Preservative: 0.05% Sodium azide Constituents: 0.1% BSA, 40% Glycerol (glycerin, glycerine), 9.85% Tris glycine, 50% Tissue culture supernatant
Purity	Tissue culture supernatant
Clonality	Monoclonal
Clone number	EPR3360(2)
Isotype	IgG

Applications

Our [Abpromise guarantee](#) covers the use of **ab111050** in the following tested applications.

The application notes include recommended starting dilutions; optimal dilutions/concentrations should be determined by the end user.

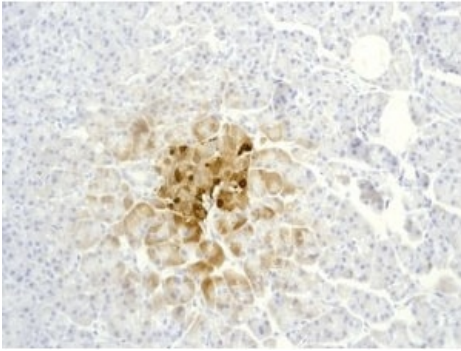
Application	Abreviews	Notes
ELISA		Use a concentration of 1 µg/ml.
IHC-P		1/100 - 1/250. Perform heat mediated antigen retrieval before commencing with IHC staining protocol. Heat up to 98 degrees C, below boiling, and then let cool for 10-20 min.

Application notes Is unsuitable for WB.

Target

Relevance The cyclic tetradecapeptide somatostatin 28 is widely distributed throughout the body and is an important regulator of endocrine and nervous system function. It exerts its biologic actions by binding to specific high affinity receptors on the cell surface.

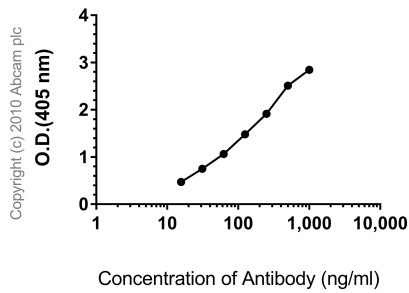
Cellular localization Secreted



Immunohistochemistry (Formalin/PFA-fixed paraffin-embedded sections) - Anti-Somatostatin 28 antibody [EPR3360(2)] (ab111050)

ab111050 at 1/100 dilution staining Somatostatin 28 in Paraffin-embedded Human Pancreas tissue by Immunohistochemistry. Heat mediated antigen retrieval was performed before commencing with IHC staining protocol.





Indirect ELISA antibody dose-response curve antigen at 1000 ng/ml



ELISA - Anti-Somatostatin 28 antibody [EPR3360(2)] (ab111050)

ELISA analysis of Somatostatin 28 recombinant protein at 1000 ng/mL with ab111050. An Alkaline Phosphatase-conjugated AffiniPure Goat Anti-Rabbit IgG (H+L) at 1/2500 dilution was used as the secondary antibody.

Why choose a recombinant antibody?

 <p>Research with confidence Consistent and reproducible results</p>	 <p>Long-term and scalable supply Recombinant technology</p>
 <p>Success from the first experiment Confirmed specificity</p>	 <p>Ethical standards compliant Animal-free production</p>

Anti-Somatostatin 28 antibody [EPR3360(2)] (ab111050)

Our Abpromise to you: Quality guaranteed and expert technical support

- Replacement or refund for products not performing as stated on the datasheet
- Valid for 12 months from date of delivery
- Response to your inquiry within 24 hours

- We provide support in Chinese, English, French, German, Japanese and Spanish
- Extensive multi-media technical resources to help you
- We investigate all quality concerns to ensure our products perform to the highest standards

If the product does not perform as described on this datasheet, we will offer a refund or replacement. For full details of the Abpromise, please visit <https://www.abcam.com/abpromise> or contact our technical team.

Terms and conditions

- Guarantee only valid for products bought direct from Abcam or one of our authorized distributors