



Product datasheet

Anti-Somatostatin Receptor 3/SSTR3 antibody [7H8E5] ab201952

4 Images

Overview

Product name	Anti-Somatostatin Receptor 3/SSTR3 antibody [7H8E5]
Description	Mouse monoclonal [7H8E5] to Somatostatin Receptor 3/SSTR3
Host species	Mouse
Tested applications	Suitable for: WB, Flow Cyt
Species reactivity	Reacts with: Human
Immunogen	<p>Recombinant fragment corresponding to Human Somatostatin Receptor 3/SSTR3 aa 1-43. Recombinant fragment corresponding to extracellular domain of human Somatostatin Receptor 3/SSTR3 expressed in E coli Sequence: MDMLHPSSVSTTSEPENASSAWPPDATLGNVSAGPS PAGLAVS</p> <p>Database link: P32745</p> <p style="text-align: right;">  Run BLAST with  Run BLAST with </p>
Positive control	Human Somatostatin Receptor 3/SSTR3 (AA: 1-43) recombinant protein; Human Somatostatin Receptor 3/SSTR3 (AA: 1-43) transfected HEK293 cell lysate; HeLa; PANC1; PC-12; SK N SH; U937 and HepG2 whole cell lysate (ab7900). HeLa cells.
General notes	This product was previously labelled as Somatostatin Receptor 3

Properties

Form	Liquid
Storage instructions	Shipped at 4°C. Store at +4°C short term (1-2 weeks). Upon delivery aliquot. Store at -20°C long term. Avoid freeze / thaw cycle.
Storage buffer	Preservative: 0.05% Sodium azide Constituent: 99% PBS
Purity	Protein G purified
Purification notes	Purified from tissue culture supernatant.

Clonality	Monoclonal
Clone number	7H8E5
Isotype	IgG1

Applications

Our [Abpromise guarantee](#) covers the use of **ab201952** in the following tested applications.

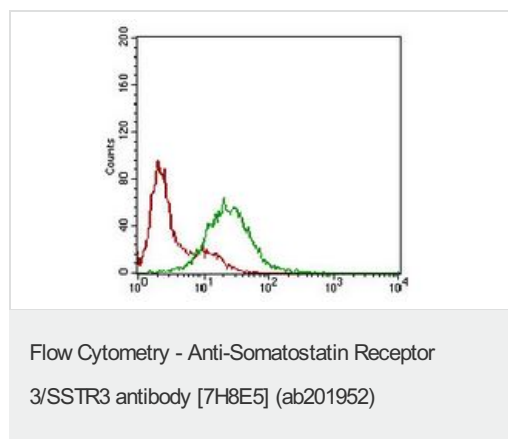
The application notes include recommended starting dilutions; optimal dilutions/concentrations should be determined by the end user.

Application	Abreviews	Notes
WB		1/500 - 1/2000. Predicted molecular weight: 46 kDa.
Flow Cyt		1/200 - 1/400. ab170190 - Mouse monoclonal IgG1, is suitable for use as an isotype control with this antibody.

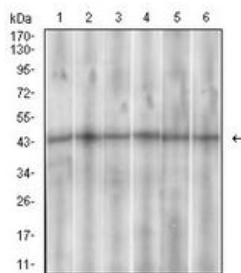
Target

Function	Receptor for somatostatins-14 and -28. This receptor is coupled via pertussis toxin sensitive G proteins to inhibition of adenylyl cyclase.
Tissue specificity	Brain, pituitary and pancreas.
Sequence similarities	Belongs to the G-protein coupled receptor 1 family.
Post-translational modifications	Phosphorylated. Phosphorylation increases upon somatostatin binding.
Cellular localization	Cell membrane. Internalized into endoplasmic vesicles upon somatostatin-stimulation.

Images



Flow cytometric analysis of HeLa cells labeling Somatostatin Receptor 3 using ab 201952 at 1/200 dilution (green) and negative control (red).



Western blot - Anti-Somatostatin Receptor 3/SSTR3 antibody [7H8E5] (ab201952)

All lanes : Anti-Somatostatin Receptor 3/SSTR3 antibody [7H8E5] (ab201952) at 1/500 dilution

Lane 1 : HeLa cell lysate

Lane 2 : PANC1 cell lysate

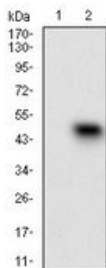
Lane 3 : PC 12 cell lysate

Lane 4 : SK N SH cell lysate

Lane 5 : U937 cell lysate

Lane 6 : HepG2 cell lysate

Predicted band size: 46 kDa



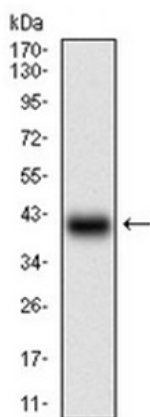
Western blot - Anti-Somatostatin Receptor 3/SSTR3 antibody [7H8E5] (ab201952)

All lanes : Anti-Somatostatin Receptor 3/SSTR3 antibody [7H8E5] (ab201952) at 1/500 dilution

Lane 1 : HEK293 cell lysate

Lane 2 : Human Somatostatin Receptor 3/SSTR3 (AA: 1-43) recombinant protein transfected HEK293 cell lysate

Predicted band size: 46 kDa



Western blot - Anti-Somatostatin Receptor 3/SSTR3 antibody [7H8E5] (ab201952)

Anti-Somatostatin Receptor 3/SSTR3 antibody [7H8E5] (ab201952) at 1/500 dilution + Human Somatostatin Receptor 3/SSTR3 (AA: 1-43) recombinant protein

Predicted band size: 46 kDa

Expected MW is 30.2 kD

Our Abpromise to you: Quality guaranteed and expert technical support

- Replacement or refund for products not performing as stated on the datasheet
- Valid for 12 months from date of delivery
- Response to your inquiry within 24 hours

- We provide support in Chinese, English, French, German, Japanese and Spanish
- Extensive multi-media technical resources to help you
- We investigate all quality concerns to ensure our products perform to the highest standards

If the product does not perform as described on this datasheet, we will offer a refund or replacement. For full details of the Abpromise, please visit <https://www.abcam.com/abpromise> or contact our technical team.

Terms and conditions

- Guarantee only valid for products bought direct from Abcam or one of our authorized distributors