


Product datasheet

# Anti-Somatostatin Receptor 5 antibody - Extracellular domain ab140922

[2 Images](#)

Overview

<b>Product name</b>	Anti-Somatostatin Receptor 5 antibody - Extracellular domain
<b>Description</b>	Rabbit polyclonal to Somatostatin Receptor 5 - Extracellular domain
<b>Host species</b>	Rabbit
<b>Specificity</b>	BLAST analysis of the peptide immunogen showed no homology with other Human proteins.
<b>Tested applications</b>	<b>Suitable for:</b> IHC-P
<b>Species reactivity</b>	<b>Reacts with:</b> Human <b>Predicted to work with:</b> Gorilla, Common marmoset 
<b>Immunogen</b>	Synthetic 16 amino acid peptide from the second extracellular domain of Human Somatostatin Receptor 5.
<b>Positive control</b>	Human heart and adrenal tissues.

Properties

<b>Form</b>	Liquid
<b>Storage instructions</b>	Shipped at 4°C.
<b>Storage buffer</b>	Preservative: 0.1% Sodium azide Constituent: 99% PBS
<b>Purity</b>	Immunogen affinity purified
<b>Clonality</b>	Polyclonal
<b>Isotype</b>	IgG

Applications

Our [Abpromise guarantee](#) covers the use of **ab140922** in the following tested applications.

The application notes include recommended starting dilutions; optimal dilutions/concentrations should be determined by the end user.

Application	Abreviews	Notes
IHC-P		Use a concentration of 10 µg/ml. Antigen retrieval requires Proteinase K treatment.

## Target

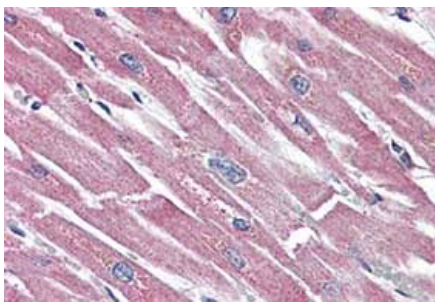
---

<b>Function</b>	Receptor for somatostatin 28 and to a lesser extent for somatostatin-14. The activity of this receptor is mediated by G proteins which inhibit adenylyl cyclase.
<b>Tissue specificity</b>	Adult pituitary gland, heart, small intestine, adrenal gland, cerebellum and fetal hypothalamus. No expression in fetal or adult kidney, liver, pancreas, uterus, spleen, lung, thyroid or ovary.
<b>Sequence similarities</b>	Belongs to the G-protein coupled receptor 1 family.
<b>Cellular localization</b>	Cell membrane.

---

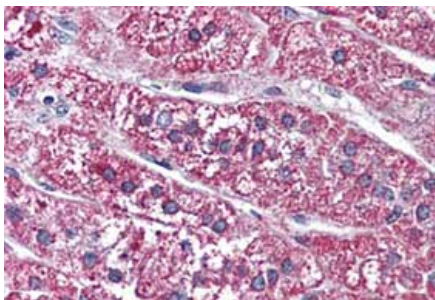
## Images

---



Immunohistochemical analysis of formalin-fixed, paraffin-embedded Human heart tissue labelling Somatostatin Receptor 5 with ab140922 at 10 µg/ml.

Immunohistochemistry (Formalin/PFA-fixed paraffin-embedded sections) - Anti-Somatostatin Receptor 5 antibody - Extracellular domain (ab140922)



Immunohistochemical analysis of formalin-fixed, paraffin-embedded Human adrenal tissue labelling Somatostatin Receptor 5 with ab140922 at 10 µg/ml.

Immunohistochemistry (Formalin/PFA-fixed paraffin-embedded sections) - Anti-Somatostatin Receptor 5 antibody - Extracellular domain (ab140922)

**Please note:** All products are "FOR RESEARCH USE ONLY. NOT FOR USE IN DIAGNOSTIC PROCEDURES"

## Our Abpromise to you: Quality guaranteed and expert technical support

---

- Replacement or refund for products not performing as stated on the datasheet
- Valid for 12 months from date of delivery

- Response to your inquiry within 24 hours
- We provide support in Chinese, English, French, German, Japanese and Spanish
- Extensive multi-media technical resources to help you
- We investigate all quality concerns to ensure our products perform to the highest standards

If the product does not perform as described on this datasheet, we will offer a refund or replacement. For full details of the Abpromise, please visit <https://www.abcam.com/abpromise> or contact our technical team.

### **Terms and conditions**

---

- Guarantee only valid for products bought direct from Abcam or one of our authorized distributors