

## Product datasheet

# Anti-SOS1 antibody ab235894

3 Images

### Overview

<b>Product name</b>	Anti-SOS1 antibody
<b>Description</b>	Rabbit polyclonal to SOS1
<b>Host species</b>	Rabbit
<b>Tested applications</b>	<b>Suitable for:</b> IHC-P, ICC/IF
<b>Species reactivity</b>	<b>Reacts with:</b> Human <b>Predicted to work with:</b> Mouse
<b>Immunogen</b>	<p>Recombinant fragment corresponding to Human SOS1 aa 1140-1281. Sequence:</p> <p>LTKGTDEVVPPPVPPRRRPESAPAESSPSKIMSKHLDS PPAIPPRQPTS KAYSPRYSISDRTSISDPPESPPLLPPREPVRTPDVFSSSP LHLQPPPLG KKSDHGNAPFPNSPSPFTPPPPQTPSPHGTRRHLPSPPL TQE</p> <p>Database link: <a href="#">Q07889</a></p> <p style="text-align: right;"> <a href="#">Run BLAST with</a>       <a href="#">Run BLAST with</a></p>
<b>Positive control</b>	IHC-P: Human colon cancer and placenta tissues. ICC/IF: HeLa cells.
<b>General notes</b>	<p>Reproducibility is key to advancing scientific discovery and accelerating scientists' next breakthrough.</p> <p>Abcam is leading the way with our range of recombinant antibodies, knockout-validated antibodies and knockout cell lines, all of which support improved reproducibility.</p> <p>We are also planning to innovate the way in which we present recommended applications and species on our product datasheets, so that only applications &amp; species that have been tested in our own labs, our suppliers or by selected trusted collaborators are covered by our Abpromise™ guarantee.</p> <p>In preparation for this, we have started to update the applications &amp; species that this product is Abpromise guaranteed for.</p> <p>We are also updating the applications &amp; species that this product has been “predicted to work with,” however this information is not covered by our Abpromise guarantee.</p> <p>Applications &amp; species from publications and Abreviews that have not been tested in our own labs or in those of our suppliers are not covered by the Abpromise guarantee.</p>

Please check that this product meets your needs before purchasing. If you have any questions, special requirements or concerns, please send us an inquiry and/or contact our Support team ahead of purchase. Recommended alternatives for this product can be found below, as well as customer reviews and Q&As.

## Properties

---

<b>Form</b>	Liquid
<b>Storage instructions</b>	Shipped at 4°C. Store at +4°C short term (1-2 weeks). Upon delivery aliquot. Store at -20°C long term. Avoid freeze / thaw cycle.
<b>Storage buffer</b>	pH: 7.40 Constituents: 50% Glycerol (glycerin, glycerine), PBS, 0.03% Proclin 300
<b>Purity</b>	Protein G purified
<b>Purification notes</b>	Purity >95%.
<b>Clonality</b>	Polyclonal
<b>Isotype</b>	IgG

## Applications

---

Our [Abpromise guarantee](#) covers the use of **ab235894** in the following tested applications.

The application notes include recommended starting dilutions; optimal dilutions/concentrations should be determined by the end user.

Application	Abreviews	Notes
IHC-P		1/200 - 1/500.
ICC/IF		1/50 - 1/200.

## Target

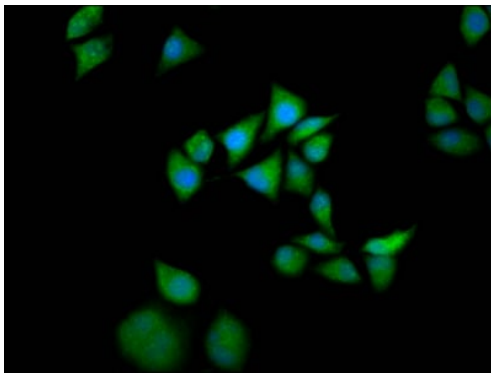
---

<b>Function</b>	Promotes the exchange of Ras-bound GDP by GTP.
<b>Tissue specificity</b>	Expressed in gingival tissues.
<b>Involvement in disease</b>	<p>Defects in SOS1 are the cause of gingival fibromatosis 1 (GGF1) [MIM:135300]; also known as GINGF1. Gingival fibromatosis is a rare overgrowth condition characterized by a benign, slowly progressive, nonhemorrhagic, fibrous enlargement of maxillary and mandibular keratinized gingiva. GGF1 is usually transmitted as an autosomal dominant trait, although sporadic cases are common.</p> <p>Defects in SOS1 are the cause of Noonan syndrome type 4 (NS4) [MIM:610733]. NS4 is an autosomal dominant disorder characterized by dysmorphic facial features, short stature, hypertelorism, cardiac anomalies, deafness, motor delay, and a bleeding diathesis. It is a genetically heterogeneous and relatively common syndrome, with an estimated incidence of 1 in 1000-2500 live births. Rarely, NS4 is associated with juvenile myelomonocytic leukemia (JMML). SOS1 mutations engender a high prevalence of pulmonary valve disease; atrial septal defects are less common.</p>

## Sequence similarities

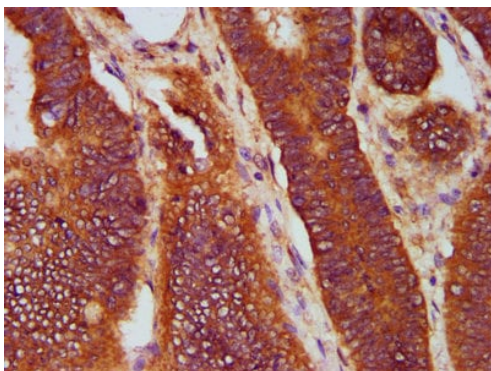
Contains 1 DH (DBL-homology) domain.  
Contains 1 N-terminal Ras-GEF domain.  
Contains 1 PH domain.  
Contains 1 Ras-GEF domain.

## Images



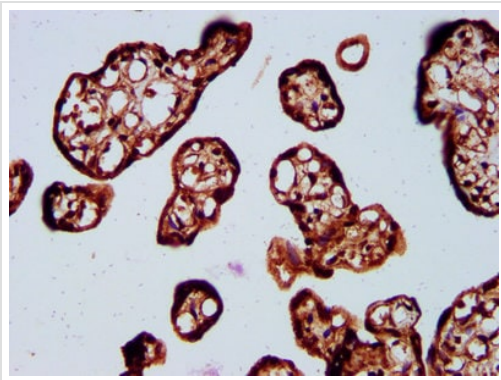
Immunocytochemistry/ Immunofluorescence - Anti-SOS1 antibody (ab235894)

4% formaldehyde-fixed, 0.2% Triton X-100 permeabilized HeLa (human epithelial cell line from cervix adenocarcinoma) cells stained for SOS1 (green) using ab235894 at 1/133 dilution in ICC/IF, followed by Alexa Fluor 488<sup>®</sup> conjugated Goat Anti-Rabbit IgG (H+L).



Immunohistochemistry (Formalin/PFA-fixed paraffin-embedded sections) - Anti-SOS1 antibody (ab235894)

Paraffin-embedded human colon cancer tissue stained for SOS1 using ab235894 at 1/400 dilution in immunohistochemical analysis. After dewaxing and hydration, antigen retrieval was mediated by high pressure in a citrate buffer (pH 6.0). Section was blocked with 10% normal goat serum 30 minutes at room temperature. Then primary antibody (1% BSA) was incubated at 4°C overnight. The primary is detected by a biotinylated secondary antibody and visualized tissue using an HRP conjugated SP system.



Immunohistochemistry (Formalin/PFA-fixed paraffin-embedded sections) - Anti-SOS1 antibody (ab235894)

Paraffin-embedded human placenta tissue stained for SOS1 using ab235894 at 1/400 dilution in immunohistochemical analysis.

After dewaxing and hydration, antigen retrieval was mediated by high pressure in a citrate buffer (pH 6.0). Section was blocked with 10% normal goat serum 30 minutes at room temperature. Then primary antibody (1% BSA) was incubated at 4°C overnight. The primary is detected by a biotinylated secondary antibody and visualized tissue using an HRP conjugated SP system.

**Please note:** All products are "FOR RESEARCH USE ONLY. NOT FOR USE IN DIAGNOSTIC PROCEDURES"

### Our Abpromise to you: Quality guaranteed and expert technical support

---

- Replacement or refund for products not performing as stated on the datasheet
- Valid for 12 months from date of delivery
- Response to your inquiry within 24 hours
  
- We provide support in Chinese, English, French, German, Japanese and Spanish
- Extensive multi-media technical resources to help you
- We investigate all quality concerns to ensure our products perform to the highest standards

If the product does not perform as described on this datasheet, we will offer a refund or replacement. For full details of the Abpromise, please visit <https://www.abcam.com/abpromise> or contact our technical team.

### Terms and conditions

---

- Guarantee only valid for products bought direct from Abcam or one of our authorized distributors