

Product datasheet

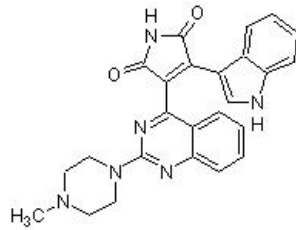
Sotrastaurin, pan-PKC inhibitor ab219867

Overview

Product name	Sotrastaurin, pan-PKC inhibitor
Description	Potent, selective pan-PKC inhibitor
Biological description	Potent, selective pan-PKC inhibitor (K_i values of 0.95, 0.64, 2.1, 3.2, 1.8, and 0.22 nM for PKC α , β I, δ , ϵ , η , and θ respectively in a cell-free assay). Prevents the production of various cytokines by activated T cells, macrophages, and keratinocytes <i>in vitro</i> and has been shown to inhibit an acute allergic contact dermatitis response in rats when dosed orally at 30 mg. Displays potential immunosuppressive activity.

CAS Number 425637-18-9

Chemical structure



Properties

Molecular weight	438.48
Molecular formula	C ₂₅ H ₂₂ N ₆ O ₂
PubChem identifier	10296883
Storage instructions	Store at -20°C. Store under desiccating conditions.
SMILES	CN1CCN(CC1)C2=NC3=CC=CC=C3C(=N2)C4=C(C(=O)NC4=O)C5=CNC6=CC=CC=C65
Source	Synthetic

Please note: All products are "FOR RESEARCH USE ONLY. NOT FOR USE IN DIAGNOSTIC PROCEDURES, NOT FOR USE IN HUMANS"

Our Abpromise to you: Quality guaranteed and expert technical support

- Replacement or refund for products not performing as stated on the datasheet
- Valid for 12 months from date of delivery

- Response to your inquiry within 24 hours
- We provide support in Chinese, English, French, German, Japanese and Spanish
- Extensive multi-media technical resources to help you
- We investigate all quality concerns to ensure our products perform to the highest standards

If the product does not perform as described on this datasheet, we will offer a refund or replacement. For full details of the Abpromise, please visit <https://www.abcam.com/abpromise> or contact our technical team.

Terms and conditions

- Guarantee only valid for products bought direct from Abcam or one of our authorized distributors
- Abcam biochemicals are novel compounds and we have not tested their biological activity in house. Please use the literature to identify how to use these products effectively. If you require further assistance please contact the scientific support team