


## Product datasheet

# Anti-SOX11 antibody [CL0142] ab154138

[2 References](#) [5 Images](#)

### Overview

---

<b>Product name</b>	Anti-SOX11 antibody [CL0142]
<b>Description</b>	Mouse monoclonal [CL0142] to SOX11
<b>Host species</b>	Mouse
<b>Tested applications</b>	<b>Suitable for:</b> ICC/IF, IHC-P
<b>Species reactivity</b>	<b>Reacts with:</b> Mouse, Human <b>Predicted to work with:</b> Pig 
<b>Immunogen</b>	Recombinant fragment corresponding to amino acids 56-166 of Human SOX11. <a href="#">Run BLAST with ExPASy</a> <a href="#">Run BLAST with NCBI</a>
<b>Positive control</b>	IHC-P: Human mantle cell lymphoma, mouse retina, and mouse brain tissues. ICC/IF: RH-30 cells.
<b>General notes</b>	<p>The antibody solution should be gently mixed before use.</p> <p>The Life Science industry has been in the grips of a reproducibility crisis for a number of years. Abcam is leading the way in addressing this with our range of recombinant monoclonal antibodies and knockout edited cell lines for gold-standard validation. Please check that this product meets your needs before purchasing.</p> <p>If you have any questions, special requirements or concerns, please send us an inquiry and/or contact our Support team ahead of purchase. Recommended alternatives for this product can be found below, along with publications, customer reviews and Q&amp;As</p>

### Properties

---

<b>Form</b>	Liquid
<b>Storage instructions</b>	Shipped at 4°C. Upon delivery aliquot and store at -20°C. Avoid repeated freeze / thaw cycles.
<b>Storage buffer</b>	pH: 7.20 Preservative: 0.02% Sodium azide Constituents: 59% PBS, 40% Glycerol
<b>Purity</b>	Protein A purified
<b>Clonality</b>	Monoclonal
<b>Clone number</b>	CL0142
<b>Isotype</b>	IgG2a

## Applications

### The Abpromise guarantee

Our **Abpromise guarantee** covers the use of ab154138 in the following tested applications.

The application notes include recommended starting dilutions; optimal dilutions/concentrations should be determined by the end user.

Application	Abreviews	Notes
ICC/IF		Use a concentration of 2 - 10 µg/ml. Fixation/Permeabilization: PFA/Triton X-100.
IHC-P		1/200 - 1/500. Perform heat mediated antigen retrieval with citrate buffer pH 6 before commencing with IHC staining protocol.

## Target

### Function

Probably important in the developing nervous system. May also have a role in tissue modeling during development.

### Tissue specificity

Expressed mainly in the nervous system.

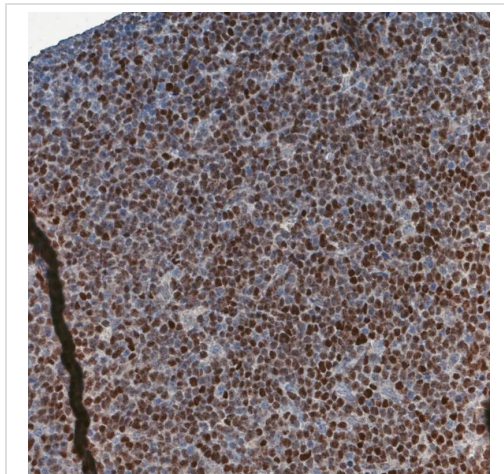
### Sequence similarities

Contains 1 HMG box DNA-binding domain.

### Cellular localization

Nucleus.

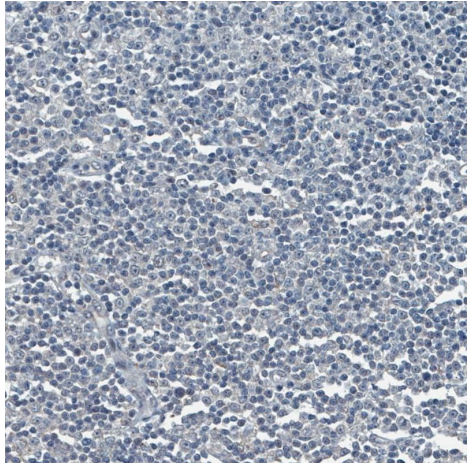
## Images



Immunohistochemical analysis of human mantle cell lymphoma labeling SOX11 with ab154138 at 1/200 dilution.

Shows moderate to strong nuclear positivity in tumor cells.

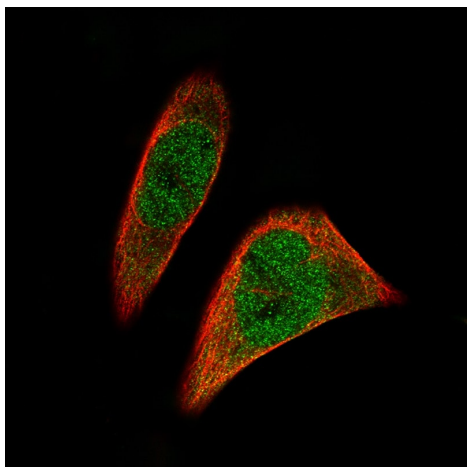
Immunohistochemistry (Formalin/PFA-fixed paraffin-embedded sections) - Anti-SOX11 antibody  
[CL0142] (ab154138)



Immunohistochemistry (Formalin/PFA-fixed paraffin-embedded sections) - Anti-SOX11 antibody [CL0142] (ab154138)

Immunohistochemical analysis of human chronic lymphoid leukemia tissue showing no labeling of SOX11 with ab154138 at 1/200 dilution (negative control).

Shows no nuclear positivity in tumor cells as expected.

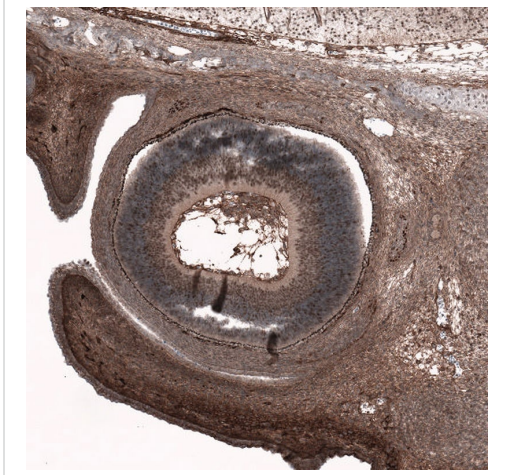


Immunocytochemistry/ Immunofluorescence - Anti-SOX11 antibody [CL0142] (ab154138)

Immunocytochemistry/Immunofluorescence analysis of RH-30 cells labelling SOX11 with ab154138 at 2µg/ml.

Shows specific staining in the nucleus and cytosol in green.

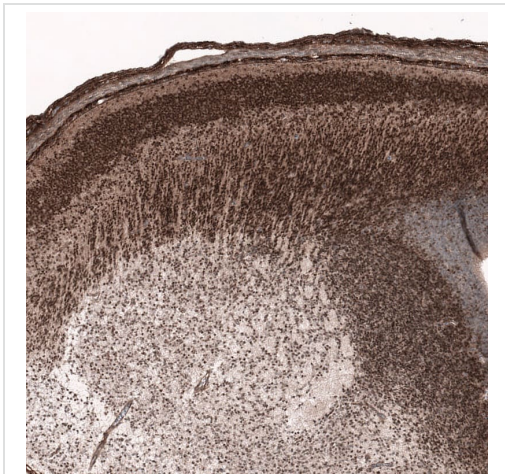
Microtubule are visualized in red.



Immunohistochemical analysis of mouse embryo e14 retina labeling SOX11 with ab154138 at 1/200 dilution.

Shows moderate nuclear positivity in developing retina.

Immunohistochemistry (Formalin/PFA-fixed paraffin-embedded sections) - Anti-SOX11 antibody  
[CL0142] (ab154138)



Immunohistochemical analysis of mouse embryo e14 labeling SOX11 with ab154138 at 1/200 dilution.

Shows strong nuclear positivity in the developing forebrain.

Immunohistochemistry (Formalin/PFA-fixed paraffin-embedded sections) - Anti-SOX11 antibody  
[CL0142] (ab154138)

**Please note:** All products are "FOR RESEARCH USE ONLY. NOT FOR USE IN DIAGNOSTIC PROCEDURES"

**Our Abpromise to you: Quality guaranteed and expert technical support**

- Replacement or refund for products not performing as stated on the datasheet
- Valid for 12 months from date of delivery
- Response to your inquiry within 24 hours
  
- We provide support in Chinese, English, French, German, Japanese and Spanish
- Extensive multi-media technical resources to help you
- We investigate all quality concerns to ensure our products perform to the highest standards

If the product does not perform as described on this datasheet, we will offer a refund or replacement. For full details of the Abpromise, please visit <https://www.abcam.com/abpromise> or contact our technical team.

### **Terms and conditions**

---

- Guarantee only valid for products bought direct from Abcam or one of our authorized distributors