




Product datasheet

Anti-SPACA3 antibody - C-terminal ab178725

1 Image

Overview

| | |
|----------------------------|--|
| Product name | Anti-SPACA3 antibody - C-terminal |
| Description | Rabbit polyclonal to SPACA3 - C-terminal |
| Host species | Rabbit |
| Tested applications | Suitable for: WB |
| Species reactivity | Reacts with: Mouse Predicted to work with: Rat, Sheep, Rabbit, Goat, Horse, Cow, Cat, Dog, Human, Pig  |
| Immunogen | Synthetic peptide within Mouse SPACA3 aa 169-217 (C terminal). The exact sequence is proprietary. Sequence: RYCTDLLNNDLKDSIVCAMKIVQEPLGLGYWEAWRHH CQGRDLSDWVD Database link: Q9D9X8  Run BLAST with  Run BLAST with |
| Positive control | Mouse spleen lysate. |

Properties

| | |
|-----------------------------|---|
| Form | Liquid |
| Storage instructions | Shipped at 4°C. Store at +4°C short term (1-2 weeks). Upon delivery aliquot. Store at -20°C long term. Avoid freeze / thaw cycle. |
| Storage buffer | Preservative: 0.09% Sodium azide Constituents: 2% Sucrose, PBS |
| Purity | Immunogen affinity purified |
| Clonality | Polyclonal |
| Isotype | IgG |

Applications

Our [Abpromise guarantee](#) covers the use of **ab178725** in the following tested applications.

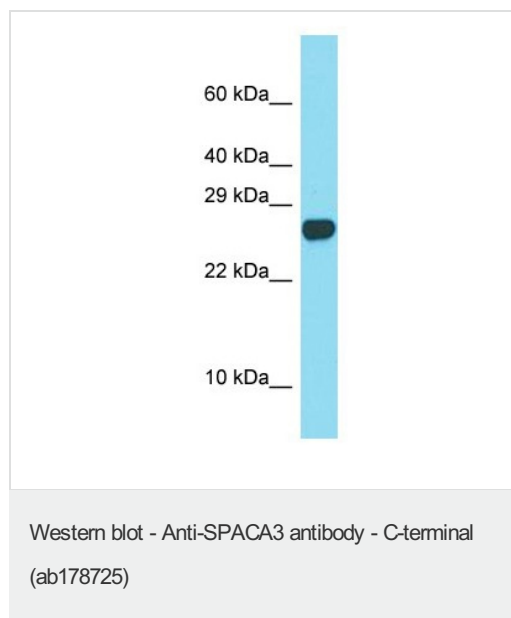
The application notes include recommended starting dilutions; optimal dilutions/concentrations should be determined by the end user.

| Application | Abreviews | Notes |
|-------------|-----------|---|
| WB | | Use a concentration of 1 µg/ml. Predicted molecular weight: 25 kDa. |

Target

| | |
|---|---|
| Function | Sperm surface membrane protein that may be involved in sperm-egg plasma membrane adhesion and fusion during fertilization. It could be a potential receptor for the egg oligosaccharide residue N-acetylglucosamine, which is present in the extracellular matrix over the egg plasma membrane. The processed form has no detectable bacteriolytic activity in vitro. |
| Tissue specificity | The processed form is expressed in sperm (at protein level). Expressed in testis, epididymis and placenta. |
| Sequence similarities | Belongs to the glycosyl hydrolase 22 family. |
| Post-translational modifications | The processed form derives from the membrane form by proteolytic processing. |
| Cellular localization | Secreted and Cytoplasmic vesicle > secretory vesicle > acrosome membrane. Anterior acrosome in non-capacitated spermatozoa and retained in the equatorial segment and in the luminal face of both the inner and outer acrosomal membranes following capacitation and the acrosome reaction. |

Images



Anti-SPACA3 antibody - C-terminal (ab178725) at 1 µg/ml +
Mouse spleen lysate at 10 µg

Predicted band size: 25 kDa

Please note: All products are "FOR RESEARCH USE ONLY. NOT FOR USE IN DIAGNOSTIC PROCEDURES"

Our Abpromise to you: Quality guaranteed and expert technical support

- Replacement or refund for products not performing as stated on the datasheet
- Valid for 12 months from date of delivery
- Response to your inquiry within 24 hours

- We provide support in Chinese, English, French, German, Japanese and Spanish
- Extensive multi-media technical resources to help you
- We investigate all quality concerns to ensure our products perform to the highest standards

If the product does not perform as described on this datasheet, we will offer a refund or replacement. For full details of the Abpromise, please visit <https://www.abcam.com/abpromise> or contact our technical team.

Terms and conditions

- Guarantee only valid for products bought direct from Abcam or one of our authorized distributors