


Product datasheet

Anti-SPANX antibody ab47252

1 References 1 Image

Overview

Product name	Anti-SPANX antibody
Description	Rabbit polyclonal to SPANX
Host species	Rabbit
Specificity	The immunogen sequence is present within SPANX-A, SPANX-B, SPANX-C, SPANX-D and SPANX-N, but not present within SPANX-E.
Tested applications	Suitable for: WB
Species reactivity	Reacts with: Human, Recombinant fragment Predicted to work with: Chimpanzee, Gorilla 
Immunogen	Synthetic peptide: GDSDPQPAPKKMKTSES , corresponding to internal sequence amino acids 31-47 of Human SPANX C Run BLAST with Run BLAST with
Positive control	Nuclear extract from VWM105 cells
General notes	<p>The Life Science industry has been in the grips of a reproducibility crisis for a number of years. Abcam is leading the way in addressing this with our range of recombinant monoclonal antibodies and knockout edited cell lines for gold-standard validation. Please check that this product meets your needs before purchasing.</p> <p>If you have any questions, special requirements or concerns, please send us an inquiry and/or contact our Support team ahead of purchase. Recommended alternatives for this product can be found below, along with publications, customer reviews and Q&As</p>

Properties

Form	Liquid
Storage instructions	Shipped at 4°C. Upon delivery aliquot and store at -20°C or -80°C. Avoid repeated freeze / thaw cycles.
Storage buffer	Preservative: 0.01% Sodium azide Constituents: 0.42% Potassium phosphate, 0.87% Sodium chloride
Purity	Immunogen affinity purified
Clonality	Polyclonal

Isotype

IgG

Applications

The Abpromise guarantee

Our [Abpromise guarantee](#) covers the use of ab47252 in the following tested applications.

The application notes include recommended starting dilutions; optimal dilutions/concentrations should be determined by the end user.

Application	Abreviews	Notes
WB		1/500 - 1/3000. Predicted molecular weight: 11 kDa.

Target

Tissue specificity

Detected in testis, melanoma and bladder carcinoma.

Sequence similarities

Belongs to the SPAN-X family.

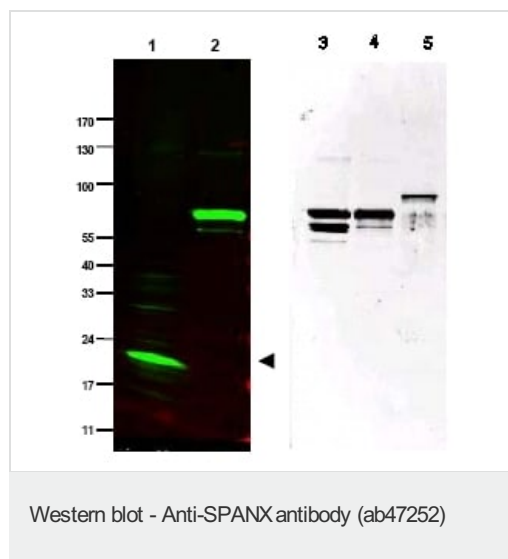
Developmental stage

Detected in round and elongating spermatids.

Cellular localization

Cytoplasm. Nucleus. Associated with nuclear craters.

Images



All lanes : Anti-SPANX antibody (ab47252) at 1/1000 dilution

Lane 1 : Nuclear extract from VWM105 cells

Lane 2 : purified recombinant SPANX-C fusion protein.

Lane 3 : purified recombinant SPANX-B, protein.

Lane 4 : purified recombinant SPANX-C, protein.

Lane 5 : purified recombinant SPANX-N, protein.

Secondary

Lanes 1-2 : IRDye™800 conjugated Gt-a-Rabbit IgG [H&L] MX (611-132-122)

Predicted band size: 11 kDa

Observed band size: 17 kDa

Additional bands at: 60 kDa, 70 kDa, 80 kDa. We are unsure as to the identity of these extra bands.

Please note: All products are "FOR RESEARCH USE ONLY. NOT FOR USE IN DIAGNOSTIC PROCEDURES"

Our Abpromise to you: Quality guaranteed and expert technical support

- Replacement or refund for products not performing as stated on the datasheet
- Valid for 12 months from date of delivery
- Response to your inquiry within 24 hours

- We provide support in Chinese, English, French, German, Japanese and Spanish
- Extensive multi-media technical resources to help you
- We investigate all quality concerns to ensure our products perform to the highest standards

If the product does not perform as described on this datasheet, we will offer a refund or replacement. For full details of the Abpromise, please visit <https://www.abcam.com/abpromise> or contact our technical team.

Terms and conditions

- Guarantee only valid for products bought direct from Abcam or one of our authorized distributors