


Product datasheet

Anti-SPARC antibody [SP205] ab225716

Recombinant RabMAb

3 References 15 Images

Overview

<b>Product name</b>	Anti-SPARC antibody [SP205]
<b>Description</b>	Rabbit monoclonal [SP205] to SPARC
<b>Host species</b>	Rabbit
<b>Tested applications</b>	<b>Suitable for:</b> WB, IHC-P, Flow Cyt, ICC/IF
<b>Species reactivity</b>	<b>Reacts with:</b> Human <b>Predicted to work with:</b> Rabbit, Cow, Pig 
<b>Immunogen</b>	Synthetic peptide. This information is proprietary to Abcam and/or its suppliers.
<b>Positive control</b>	IHC-P: Human kidney, stomach adenocarcinoma, colon adenocarcinoma, renal cell carcinoma, breast ductal carcinoma, lung squamos cell carcinoma, pancreatic adenocarcinoma, tonsil, placenta, testis and cerebellum tissues. WB: HUVEC and Jurkat whole cell lysate ( <a href="#">ab7899</a> ). Flow Cyt: A375 cells. ICC/IF: A375 cells.
<b>General notes</b>	This product is a recombinant monoclonal antibody, which offers several advantages including: <ul style="list-style-type: none"> <li>- High batch-to-batch consistency and reproducibility</li> <li>- Improved sensitivity and specificity</li> <li>- Long-term security of supply</li> <li>- Animal-free production</li> </ul> For more information <a href="#">see here</a> .  <b>This product is FOR RESEARCH USE ONLY. For commercial use, please contact <a href="mailto:partnerships@abcam.com">partnerships@abcam.com</a>.</b>

Properties

<b>Form</b>	Liquid
<b>Storage instructions</b>	Shipped at 4°C. Store at +4°C short term (1-2 weeks). Upon delivery aliquot. Store at -20°C long term. Avoid freeze / thaw cycle.
<b>Storage buffer</b>	pH: 7.60 Preservative: 0.1% Sodium azide Constituents: PBS, 1% BSA
<b>Purity</b>	Protein A/G purified
<b>Purification notes</b>	Purified from TCS by protein A/G.

<b>Clonality</b>	Monoclonal
<b>Clone number</b>	SP205
<b>Isotype</b>	IgG

## Applications

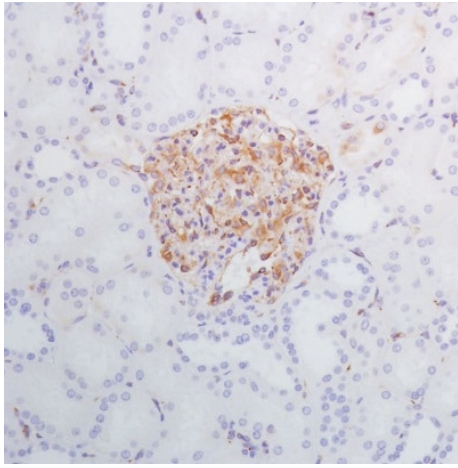
**The Abpromise guarantee** Our [Abpromise guarantee](#) covers the use of ab225716 in the following tested applications. The application notes include recommended starting dilutions; optimal dilutions/concentrations should be determined by the end user.

Application	Abreviews	Notes
WB		1/400. Predicted molecular weight: 35 kDa. Primary incubation for 1 hour at room temperature.
IHC-P		1/100. Perform heat mediated antigen retrieval with citrate buffer pH 6 before commencing with IHC staining protocol. Primary incubation for 10 minutes at room temperature.
Flow Cyt		1/200.
ICC/IF		1/15.

## Target

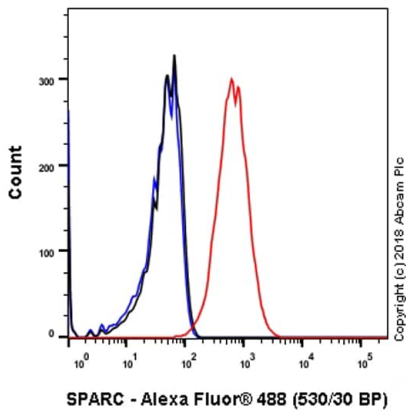
<b>Function</b>	Appears to regulate cell growth through interactions with the extracellular matrix and cytokines. Binds calcium and copper, several types of collagen, albumin, thrombospondin, PDGF and cell membranes. There are two calcium binding sites; an acidic domain that binds 5 to 8 Ca(2+) with a low affinity and an EF-hand loop that binds a Ca(2+) ion with a high affinity.
<b>Sequence similarities</b>	Belongs to the SPARC family. Contains 1 EF-hand domain. Contains 1 follistatin-like domain. Contains 1 Kazal-like domain.
<b>Developmental stage</b>	Expressed at high levels in tissues undergoing morphogenesis, remodeling and wound repair.
<b>Cellular localization</b>	Secreted > extracellular space > extracellular matrix > basement membrane. In or around the basement membrane.

## Images



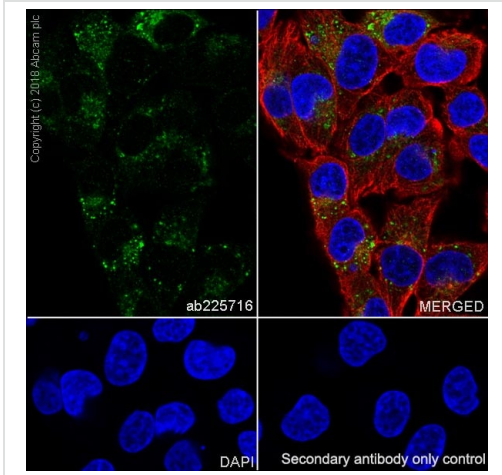
Immunohistochemistry (Formalin/PFA-fixed paraffin-embedded sections) - Anti-SPARC antibody [SP205] (ab225716)

Formalin-fixed, paraffin-embedded human kidney tissue stained for SPARC using ab225716 at 1/100 dilution in immunohistochemical analysis.



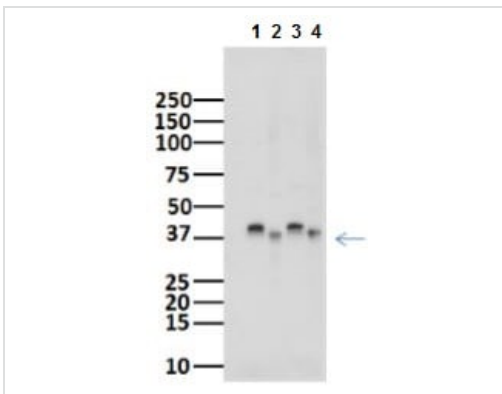
Flow Cytometry - Anti-SPARC antibody [SP205] (ab225716)

Flow Cytometry analysis of A375(Human malignant melanoma epithelial cell) cells labeling SPARC with purified ab225716 at 1:200 dilution (0.595  $\mu\text{g/ml}$ ) Red. Cells were fixed with 4% paraformaldehyde . A Goat anti rabbit IgG (Alexa Fluor® 488, ab150077) secondary antibody was used at 1:2000 dilution. Isotype control - Rabbit monoclonal IgG (ab172730) / Black. Unlabeled control - Unlabelled cells / Blue.



Immunocytochemistry/ Immunofluorescence analysis of A375 (human malignant melanoma epithelial cell) cells labeling SPARC with purified ab225716 at 1:15 (7.9 µg/ml). Cells were fixed in 4% paraformaldehyde and permeabilized with 0.1% Triton X-100. Cells were counterstained with Ab195889 Anti-alpha Tubulin antibody [DM1A] - Microtubule Marker (Alexa Fluor® 594) 1:200 (2.5 µg/ml). Goat anti rabbit IgG (Alexa Fluor® 488, ab150077) was used as the secondary antibody at 1:1000 (2 µg/ml) dilution. DAPI nuclear counterstain. PBS instead of the primary antibody was used as the secondary antibody only control.

Immunocytochemistry/ Immunofluorescence - Anti-SPARC antibody [SP205] (ab225716)



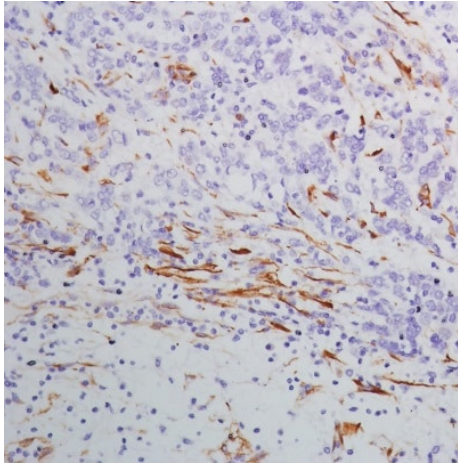
**All lanes** : Anti-SPARC antibody [SP205] (ab225716) at 1/400 dilution

**Lanes 1 & 3** : HUVEC (human umbilical vein endothelial cell line) cell lysate

**Lanes 2 & 4** : Jurkat (human T cell leukemia cell line from peripheral blood) cell lysate

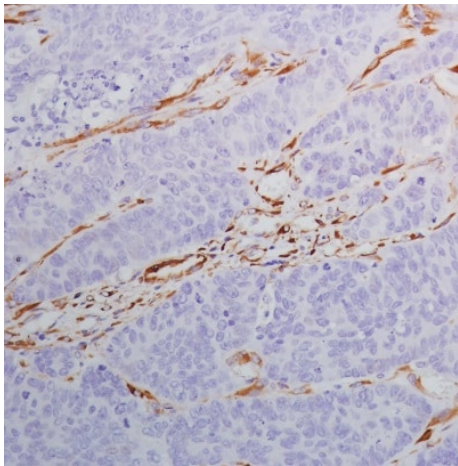
**Predicted band size:** 35 kDa

Western blot - Anti-SPARC antibody [SP205] (ab225716)



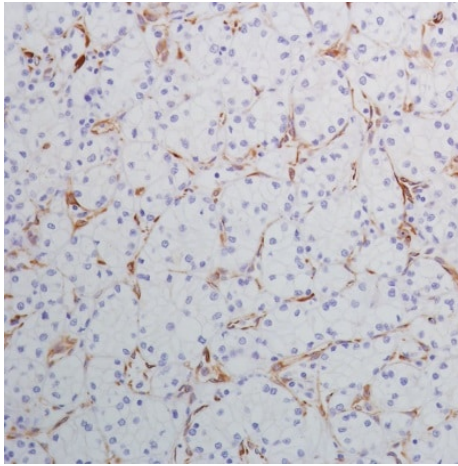
Formalin-fixed, paraffin-embedded human stomach adenocarcinoma tissue stained for SPARC using ab225716 at 1/100 dilution in immunohistochemical analysis.

Immunohistochemistry (Formalin/PFA-fixed paraffin-embedded sections) - Anti-SPARC antibody [SP205] (ab225716)



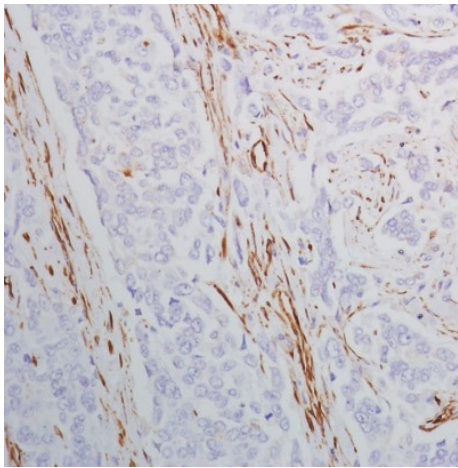
Formalin-fixed, paraffin-embedded human colon adenocarcinoma tissue stained for SPARC using ab225716 at 1/100 dilution in immunohistochemical analysis.

Immunohistochemistry (Formalin/PFA-fixed paraffin-embedded sections) - Anti-SPARC antibody [SP205] (ab225716)



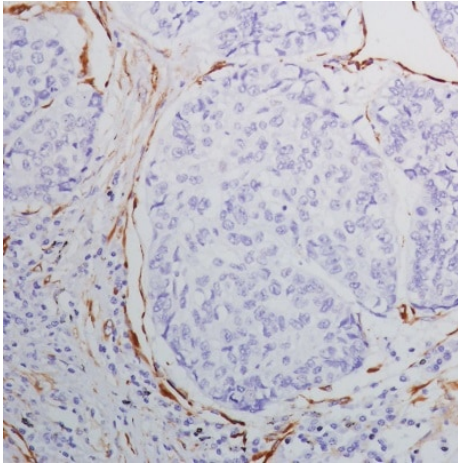
Formalin-fixed, paraffin-embedded human renal cell carcinoma tissue stained for SPARC using ab225716 at 1/100 dilution in immunohistochemical analysis.

Immunohistochemistry (Formalin/PFA-fixed paraffin-embedded sections) - Anti-SPARC antibody [SP205] (ab225716)



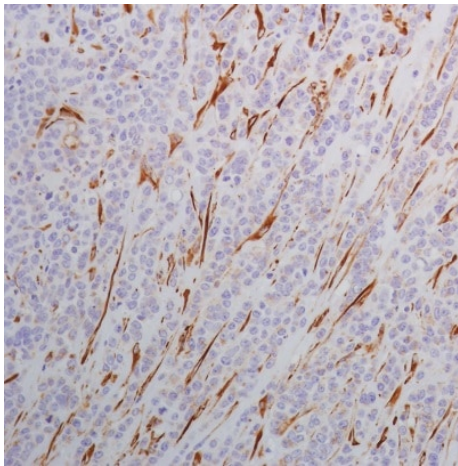
Formalin-fixed, paraffin-embedded human breast ductal carcinoma tissue stained for SPARC using ab225716 at 1/100 dilution in immunohistochemical analysis.

Immunohistochemistry (Formalin/PFA-fixed paraffin-embedded sections) - Anti-SPARC antibody [SP205] (ab225716)



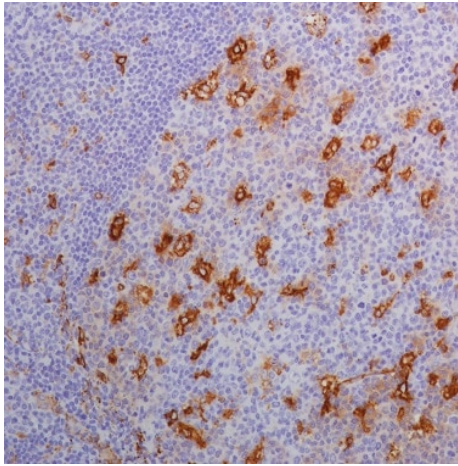
Immunohistochemistry (Formalin/PFA-fixed paraffin-embedded sections) - Anti-SPARC antibody [SP205] (ab225716)

Formalin-fixed, paraffin-embedded human lung squamous cell carcinoma tissue stained for SPARC using ab225716 at 1/100 dilution in immunohistochemical analysis.



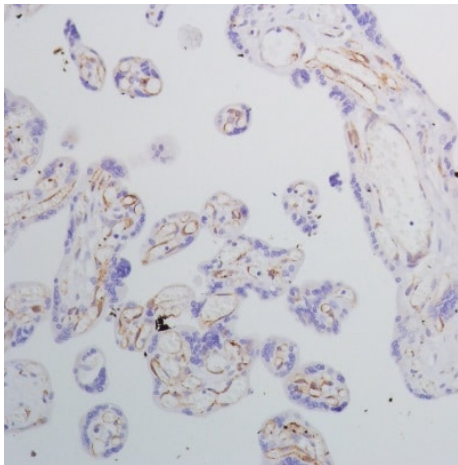
Immunohistochemistry (Formalin/PFA-fixed paraffin-embedded sections) - Anti-SPARC antibody [SP205] (ab225716)

Formalin-fixed, paraffin-embedded human pancreatic adenocarcinoma tissue stained for SPARC using ab225716 at 1/100 dilution in immunohistochemical analysis.



Formalin-fixed, paraffin-embedded human tonsil tissue stained for SPARC using ab225716 at 1/100 dilution in immunohistochemical analysis.

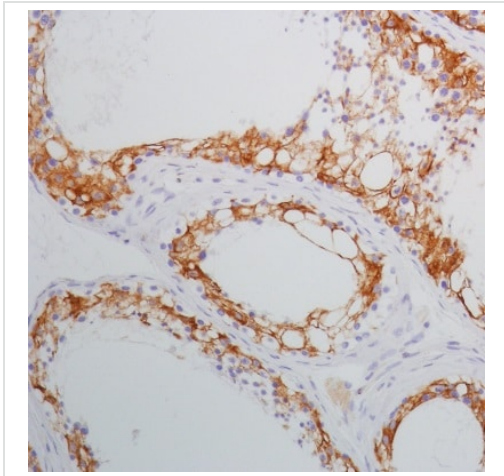
Immunohistochemistry (Formalin/PFA-fixed paraffin-embedded sections) - Anti-SPARC antibody [SP205] (ab225716)



Formalin-fixed, paraffin-embedded human placenta tissue stained for SPARC using ab225716 at 1/100 dilution in immunohistochemical analysis.

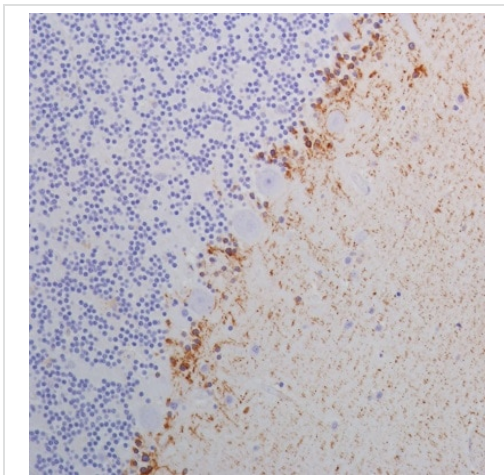
Immunohistochemistry (Formalin/PFA-fixed paraffin-embedded sections) - Anti-SPARC antibody [SP205] (ab225716)





Formalin-fixed, paraffin-embedded human testis tissue stained for SPARC using ab225716 at 1/100 dilution in immunohistochemical analysis.





Immunohistochemistry (Formalin/PFA-fixed paraffin-embedded sections) - Anti-SPARC antibody [SP205] (ab225716)



Formalin-fixed, paraffin-embedded human cerebellum tissue stained for SPARC using ab225716 at 1/100 dilution in immunohistochemical analysis.

Immunohistochemistry (Formalin/PFA-fixed paraffin-embedded sections) - Anti-SPARC antibody [SP205] (ab225716)

Why choose a recombinant antibody?

 <p><b>Research with confidence</b> Consistent and reproducible results</p>	 <p><b>Long-term and scalable supply</b> Recombinant technology</p>
 <p><b>Success from the first experiment</b> Confirmed specificity</p>	 <p><b>Ethical standards compliant</b> Animal-free production</p>

Anti-SPARC antibody [SP205] (ab225716)

**Please note:** All products are "FOR RESEARCH USE ONLY. NOT FOR USE IN DIAGNOSTIC PROCEDURES"

### Our Abpromise to you: Quality guaranteed and expert technical support

---

- Replacement or refund for products not performing as stated on the datasheet
- Valid for 12 months from date of delivery
- Response to your inquiry within 24 hours
- We provide support in Chinese, English, French, German, Japanese and Spanish
- Extensive multi-media technical resources to help you
- We investigate all quality concerns to ensure our products perform to the highest standards

If the product does not perform as described on this datasheet, we will offer a refund or replacement. For full details of the Abpromise, please visit <https://www.abcam.com/abpromise> or contact our technical team.

### Terms and conditions

---

- Guarantee only valid for products bought direct from Abcam or one of our authorized distributors