



Product datasheet

Anti-SPCS2/SPC25 antibody ab121395

2 Images

Overview

|                            |   |
|----------------------------|---|
| <b>Product name</b>        | Anti-SPCS2/SPC25 antibody   |
| <b>Description</b>         | Rabbit polyclonal to SPCS2/SPC25  |
| <b>Host species</b>        | Rabbit  |
| <b>Tested applications</b> | <b>Suitable for:</b> WB, IHC-P  |
| <b>Species reactivity</b>  | <b>Reacts with:</b> Mouse, Rat, Human   |
| <b>Immunogen</b>           | Recombinant fragment corresponding to Human SPCS2/SPC25 aa 2-65.<br>Sequence:<br>AAAAVQGGRSGGSGGCSGAGGASNCGTGSGRSGLL<br>DKWKIDDKPVKIDKW DGS AVKNSLDDSAK<br><br>Database link: <a href="#">Q15005</a><br><br> <a href="#">Run BLAST with</a>  <a href="#">Run BLAST with</a> |
| <b>Positive control</b>    | WB: RT-4, U-251 MG, Human liver and Human tonsil IHC-P: Human testis tissue   |
| <b>General notes</b>       | This product was previously labelled as SPCS2   |

Properties

|                             |  |
|-----------------------------|--|
| <b>Form</b>                 | Liquid   |
| <b>Storage instructions</b> | Shipped at 4°C. Upon delivery aliquot and store at -20°C. Avoid repeated freeze / thaw cycles. |
| <b>Storage buffer</b>       | pH: 7.20<br>Preservative: 0.02% Sodium azide<br>Constituents: 59% PBS, 40% Glycerol            |
| <b>Purity</b>               | Immunogen affinity purified  |
| <b>Clonality</b>            | Polyclonal   |
| <b>Isotype</b>              | IgG  |

Applications

Our [Abpromise guarantee](#) covers the use of **ab121395** in the following tested applications.

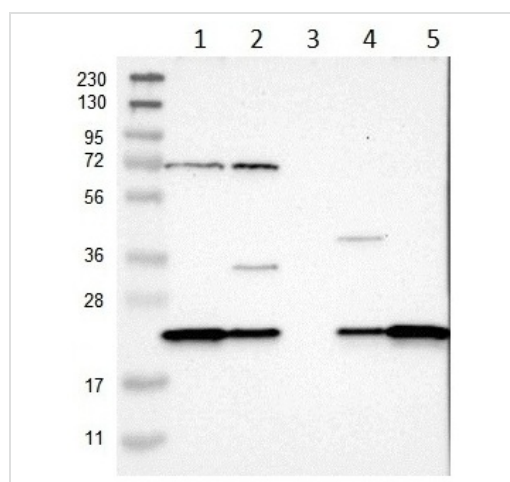
The application notes include recommended starting dilutions; optimal dilutions/concentrations should be determined by the end user.

| Application | Abreviews | Notes  |
|-------------|-----------|--|
| WB          |           | 1/250 - 1/500.   |
| IHC-P       |           | 1/50 - 1/200. Perform heat mediated antigen retrieval with citrate buffer pH 6 before commencing with IHC staining protocol. |

## Target

|                              |  |
|------------------------------|--|
| <b>Function</b>              | Component of the microsomal signal peptidase complex which removes signal peptides from nascent proteins as they are translocated into the lumen of the endoplasmic reticulum. |
| <b>Sequence similarities</b> | Belongs to the SPCS2 family.   |
| <b>Cellular localization</b> | Microsome membrane. Endoplasmic reticulum membrane.  |

## Images



Western blot - Anti-SPCS2/SPC25 antibody (ab121395)

**All lanes** : Anti-SPCS2/SPC25 antibody (ab121395) at 1/250 dilution

**Lane 1** : RT-4

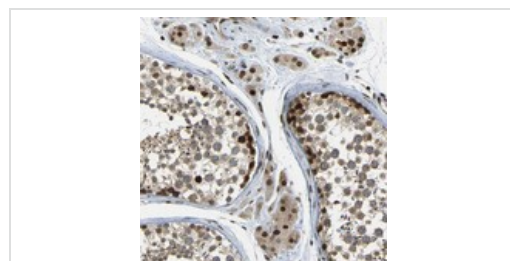
**Lane 2** : U-251 MG

**Lane 3** : Human plasma

**Lane 4** : Human liver

**Lane 5** : Human tonsil

Developed using the ECL technique.



Immunohistochemistry (Formalin/PFA-fixed paraffin-embedded sections) - Anti-SPCS2/SPC25 antibody (ab121395)

ab121395, at a 1/50 dilution, staining SPCS2/SPC25 in paraffin embedded Human testis tissue by Immunohistochemistry.

**Please note:** All products are "FOR RESEARCH USE ONLY. NOT FOR USE IN DIAGNOSTIC PROCEDURES"

### **Our Abpromise to you: Quality guaranteed and expert technical support**

---

- Replacement or refund for products not performing as stated on the datasheet
- Valid for 12 months from date of delivery
- Response to your inquiry within 24 hours
  
- We provide support in Chinese, English, French, German, Japanese and Spanish
- Extensive multi-media technical resources to help you
- We investigate all quality concerns to ensure our products perform to the highest standards

If the product does not perform as described on this datasheet, we will offer a refund or replacement. For full details of the Abpromise, please visit <https://www.abcam.com/abpromise> or contact our technical team.

### **Terms and conditions**

---

- Guarantee only valid for products bought direct from Abcam or one of our authorized distributors