




Product datasheet

Anti-SPCS3 antibody ab235598

3 Images

Overview

Product name	Anti-SPCS3 antibody
Description	Rabbit polyclonal to SPCS3
Host species	Rabbit
Tested applications	Suitable for: IHC-P, WB
Species reactivity	Reacts with: Mouse, Human Predicted to work with: Cow, Dog 
Immunogen	Recombinant fragment corresponding to Human SPCS3 aa 33-180. Sequence: KDRSVPVRLHVSRIMLKNVEDFTGPRERSDLGFITFDIT ADLENIFDWNV KQLFLYLSAEYSTKNNALNQVVLWVKMLRGDNPKLLL KDMKTKYFFFDD GNLKGNRNVTLTSLWNVVPNAGILPLVTGSGHVSVP FPDTYEITKSY Database link: P61009  Run BLAST with  Run BLAST with
Positive control	WB: Mouse kidney tissue lysate. IHC-P: Human placenta and liver tissues.

Properties

Form	Liquid
Storage instructions	Shipped at 4°C. Store at +4°C short term (1-2 weeks). Upon delivery aliquot. Store at -20°C long term. Avoid freeze / thaw cycle.
Storage buffer	pH: 7.40 Preservative: 0.03% Proclin Constituents: PBS, 50% Glycerol
Purity	Protein G purified
Purification notes	Purity >95%.
Clonality	Polyclonal
Isotype	IgG

Applications

Our [Abpromise guarantee](#) covers the use of **ab235598** in the following tested applications.

The application notes include recommended starting dilutions; optimal dilutions/concentrations should be determined by the end user.

Application	Abreviews	Notes
IHC-P		1/20 - 1/200.
WB		1/500 - 1/2000. Predicted molecular weight: 20 kDa.

Target

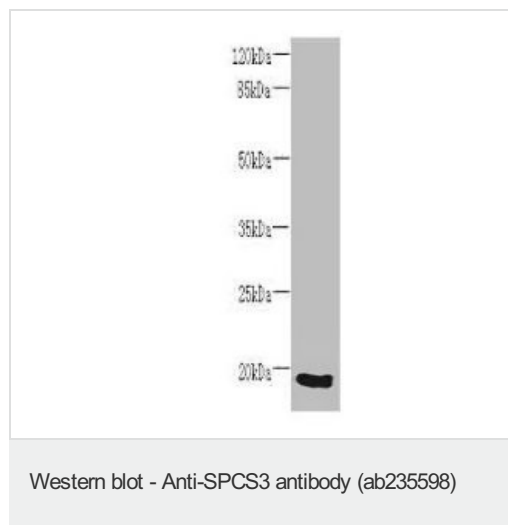
Relevance

A component of the microsomal signal peptidase complex which removes signal peptides from nascent proteins as they are translocated into the lumen of the endoplasmic reticulum.

Cellular localization

Endoplasmic reticulum and Microsome membrane;; Single-pass type II membrane protein

Images

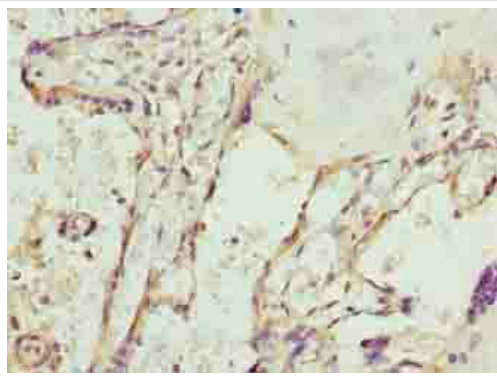


Anti-SPCS3 antibody (ab235598) at 1/500 dilution + Mouse kidney tissue lysate

Secondary

Goat polyclonal to rabbit IgG at 1/10000 dilution

Predicted band size: 20 kDa



Paraffin-embedded human placenta tissue stained for SPCS3 using ab235598 at 1/100 dilution in immunohistochemical analysis.

Immunohistochemistry (Formalin/PFA-fixed paraffin-embedded sections) - Anti-SPCS3 antibody (ab235598)



Paraffin-embedded human liver tissue stained for SPCS3 using ab235598 at 1/100 dilution in immunohistochemical analysis.

Immunohistochemistry (Formalin/PFA-fixed paraffin-embedded sections) - Anti-SPCS3 antibody (ab235598)

Please note: All products are "FOR RESEARCH USE ONLY. NOT FOR USE IN DIAGNOSTIC PROCEDURES"

Our Abpromise to you: Quality guaranteed and expert technical support

- Replacement or refund for products not performing as stated on the datasheet
- Valid for 12 months from date of delivery
- Response to your inquiry within 24 hours
- We provide support in Chinese, English, French, German, Japanese and Spanish
- Extensive multi-media technical resources to help you
- We investigate all quality concerns to ensure our products perform to the highest standards

If the product does not perform as described on this datasheet, we will offer a refund or replacement. For full details of the Abpromise, please visit <https://www.abcam.com/abpromise> or contact our technical team.

Terms and conditions

- Guarantee only valid for products bought direct from Abcam or one of our authorized distributors