

Product datasheet

Anti-Spermine synthase antibody ab222836

3 Images

Overview

Product name	Anti-Spermine synthase antibody
Description	Rabbit polyclonal to Spermine synthase
Host species	Rabbit
Tested applications	Suitable for: ICC/IF, IHC-P
Species reactivity	Reacts with: Human
Immunogen	Recombinant fragment corresponding to Human Spermine synthase aa 16-191. Database link: P52788
Positive control	IHC-P: Human ovarian and prostate cancer tissues. ICC/IF: HeLa cells.
General notes	<p>Reproducibility is key to advancing scientific discovery and accelerating scientists' next breakthrough.</p> <p>Abcam is leading the way with our range of recombinant antibodies, knockout-validated antibodies and knockout cell lines, all of which support improved reproducibility.</p> <p>We are also planning to innovate the way in which we present recommended applications and species on our product datasheets, so that only applications & species that have been tested in our own labs, our suppliers or by selected trusted collaborators are covered by our Abpromise™ guarantee.</p> <p>In preparation for this, we have started to update the applications & species that this product is Abpromise guaranteed for.</p> <p>We are also updating the applications & species that this product has been “predicted to work with,” however this information is not covered by our Abpromise guarantee.</p> <p>Applications & species from publications and Abreviews that have not been tested in our own labs or in those of our suppliers are not covered by the Abpromise guarantee.</p> <p>Please check that this product meets your needs before purchasing. If you have any questions, special requirements or concerns, please send us an inquiry and/or contact our Support team ahead of purchase. Recommended alternatives for this product can be found below, as well as customer reviews and Q&As.</p>

Properties

Form	Liquid
-------------	--------

Storage instructions	Shipped at 4°C. Store at +4°C short term (1-2 weeks). Upon delivery aliquot. Store at -20°C long term. Avoid freeze / thaw cycle.
Storage buffer	pH: 7.40 Constituents: 50% Glycerol (glycerin, glycerine), PBS, 0.03% Proclin 300
Purity	Protein G purified
Purification notes	>95%
Clonality	Polyclonal
Isotype	IgG

Applications

Our [Abpromise guarantee](#) covers the use of **ab222836** in the following tested applications.

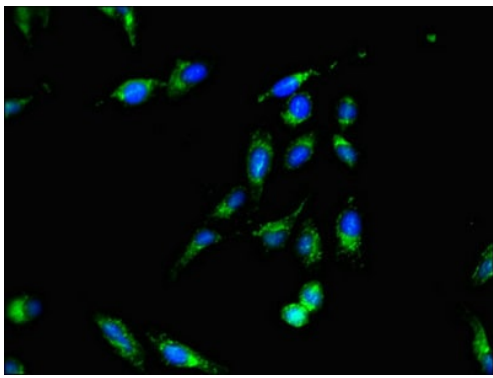
The application notes include recommended starting dilutions; optimal dilutions/concentrations should be determined by the end user.

Application	Abreviews	Notes
ICC/IF		1/50 - 1/200.
IHC-P		1/20 - 1/200.

Target

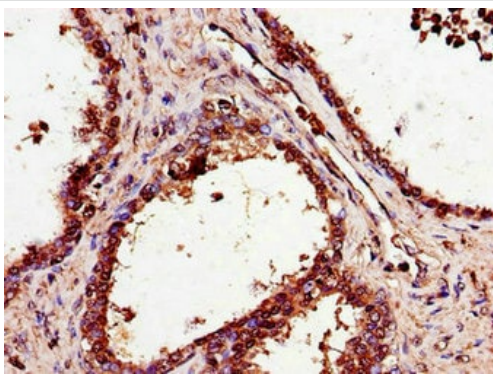
Function	Required for normal viability, growth and fertility.
Pathway	Amine and polyamine biosynthesis; spermine biosynthesis; spermine from spermidine: step 1/1.
Involvement in disease	Defects in SMS are the cause of Snyder-Robinson syndrome (SRS) [MIM:309583]; also known as X-linked mental retardation Snyder-Robinson type. SRS is characterized by moderate intellectual deficit, hypotonia, an unsteady gait, osteoporosis, kyphoscoliosis and facial asymmetry. Transmission is X-linked recessive.
Sequence similarities	Belongs to the spermidine/spermine synthase family.
Domain	Composed of 3 domains: the N-terminal domain has structural similarity to S-adenosylmethionine decarboxylase, the central domain is made up of four beta strands and the C-terminal domain is similar in structure to spermidine synthase. The N- and C-terminal domains are both required for activity.

Images



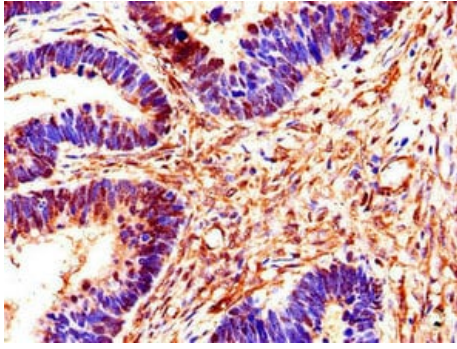
Immunocytochemistry/ Immunofluorescence - Anti-Spermine synthase antibody (ab222836)

HeLa (human epithelial cell line from cervix adenocarcinoma) cells stained for Spermine synthase (green) using ab222836 at 1/100 dilution in ICC/IF. Alexa Fluor 488-conjugated Goat anti-Rabbit IgG (H+L) was used as secondary antibody.



Immunohistochemistry (Formalin/PFA-fixed paraffin-embedded sections) - Anti-Spermine synthase antibody (ab222836)

Paraffin-embedded human prostate cancer tissue stained for Spermine synthase using ab222836 at 1/100 dilution in immunohistochemical analysis.



Paraffin-embedded human ovarian cancer tissue stained for Spermine synthase using ab222836 at 1/100 dilution in immunohistochemical analysis.

Immunohistochemistry (Formalin/PFA-fixed paraffin-embedded sections) - Anti-Spermine synthase antibody (ab222836)

Please note: All products are "FOR RESEARCH USE ONLY. NOT FOR USE IN DIAGNOSTIC PROCEDURES"

Our Abpromise to you: Quality guaranteed and expert technical support

- Replacement or refund for products not performing as stated on the datasheet
- Valid for 12 months from date of delivery
- Response to your inquiry within 24 hours
- We provide support in Chinese, English, French, German, Japanese and Spanish
- Extensive multi-media technical resources to help you
- We investigate all quality concerns to ensure our products perform to the highest standards

If the product does not perform as described on this datasheet, we will offer a refund or replacement. For full details of the Abpromise, please visit <https://www.abcam.com/abpromise> or contact our technical team.

Terms and conditions

- Guarantee only valid for products bought direct from Abcam or one of our authorized distributors