

Product datasheet

Anti-Sphingomyelin Synthase 2 antibody ab272570

6 Images

Overview

Product name	Anti-Sphingomyelin Synthase 2 antibody
Description	Rabbit polyclonal to Sphingomyelin Synthase 2
Host species	Rabbit
Tested applications	Suitable for: WB, IHC-P
Species reactivity	Reacts with: Human
Immunogen	Recombinant fragment corresponding to Human Sphingomyelin Synthase 2 aa 1-100. Database link: Q8NHU3 Run BLAST with Run BLAST with
Positive control	WB: RT4, U-251 MG sp. IHC-P: Human lung tissue, Fallopian tube tissue, small intestine tissue, gallbladder tissue, skeletal muscle tissue.
General notes	<p>The Life Science industry has been in the grips of a reproducibility crisis for a number of years. Abcam is leading the way in addressing this with our range of recombinant monoclonal antibodies and knockout edited cell lines for gold-standard validation. Please check that this product meets your needs before purchasing.</p> <p>If you have any questions, special requirements or concerns, please send us an inquiry and/or contact our Support team ahead of purchase. Recommended alternatives for this product can be found below, along with publications, customer reviews and Q&As</p>

Properties

Form	Liquid
Storage instructions	Shipped at 4°C. Store at +4°C short term (1-2 weeks). Upon delivery aliquot. Store at -20°C long term. Avoid freeze / thaw cycle.
Storage buffer	pH: 7.20 Preservative: 0.02% Sodium azide Constituents: 40% Glycerol (glycerin, glycerine), PBS
Purity	Immunogen affinity purified
Clonality	Polyclonal
Isotype	IgG

Applications

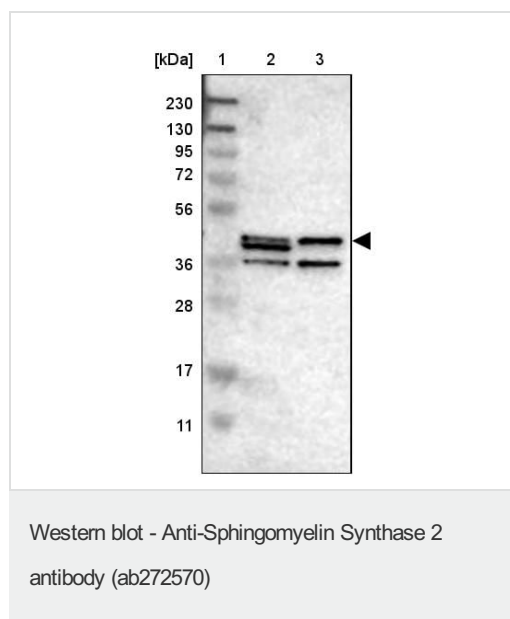
The Abpromise guarantee Our [Abpromise guarantee](#) covers the use of ab272570 in the following tested applications. The application notes include recommended starting dilutions; optimal dilutions/concentrations should be determined by the end user.

Application	Abreviews	Notes
WB		Use a concentration of 0.04 - 0.4 µg/ml.
IHC-P		1/200 - 1/500. Perform heat mediated antigen retrieval with citrate buffer pH 6 before commencing with IHC staining protocol.

Target

Function	Bidirectional lipid cholinephosphotransferase capable of converting phosphatidylcholine (PC) and ceramide to sphingomyelin (SM) and diacylglycerol (DAG) and vice versa. Direction is dependent on the relative concentrations of DAG and ceramide as phosphocholine acceptors. Directly and specifically recognizes the choline head group on the substrate. Also requires two fatty chains on the choline-P donor molecule in order to be recognized efficiently as a substrate. Does not function strictly as a SM synthase. Required for cell growth.
Tissue specificity	Brain, heart, kidney, liver, muscle and stomach.
Sequence similarities	Belongs to the sphingomyelin synthase family.
Post-translational modifications	Palmitoylated on Cys-331, Cys-332, Cys-343 and Cys-348; which plays an important role in plasma membrane localization.
Cellular localization	Cell membrane. Golgi apparatus membrane. Predominantly plasma membrane, some in Golgi apparatus.

Images

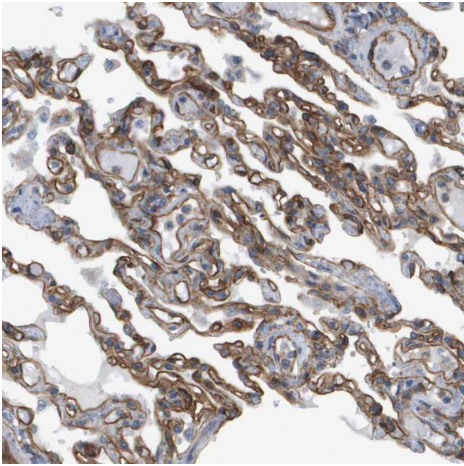


Lanes 2-3 : Anti-Sphingomyelin Synthase 2 antibody (ab272570) at 0.4 µg/ml

Lane 1 : Molecular weight ladder

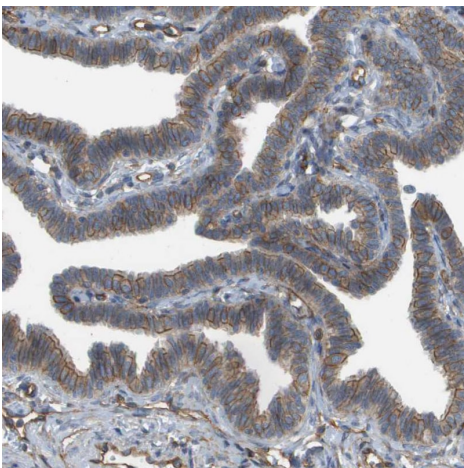
Lane 2 : RT4

Lane 3 : U-251 MG sp



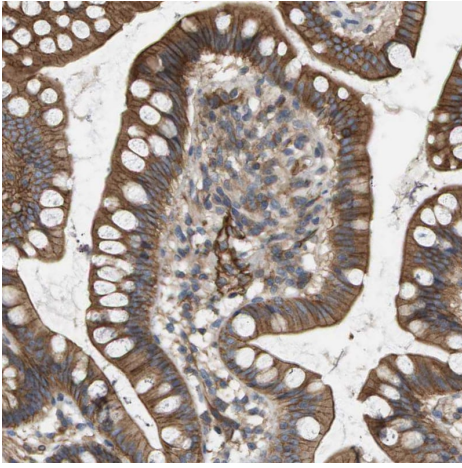
Paraffin-embedded formalin-fixed Human lung tissue stained for Sphingomyelin Synthase 2 using ab272570 at 1/500 in immunohistochemical analysis.

Immunohistochemistry (Formalin/PFA-fixed paraffin-embedded sections) - Anti-Sphingomyelin Synthase 2 antibody (ab272570)



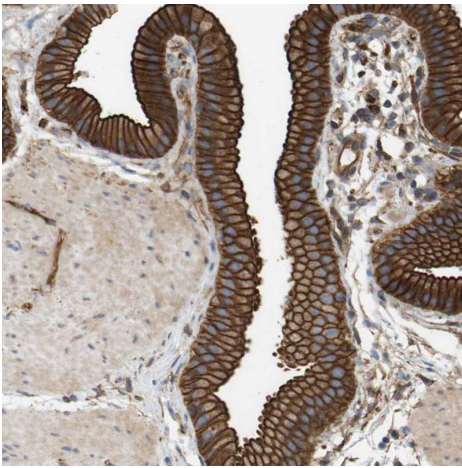
Paraffin-embedded formalin-fixed Human Fallopian tube tissue stained for Sphingomyelin Synthase 2 using ab272570 at 1/500 in immunohistochemical analysis.

Immunohistochemistry (Formalin/PFA-fixed paraffin-embedded sections) - Anti-Sphingomyelin Synthase 2 antibody (ab272570)



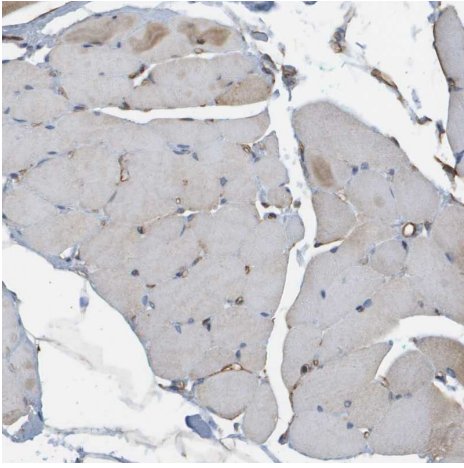
Immunohistochemistry (Formalin/PFA-fixed paraffin-embedded sections) - Anti-Sphingomyelin Synthase 2 antibody (ab272570)

Paraffin-embedded formalin-fixed Human small intestine tissue stained for Sphingomyelin Synthase 2 using ab272570 at 1/500 in immunohistochemical analysis.



Immunohistochemistry (Formalin/PFA-fixed paraffin-embedded sections) - Anti-Sphingomyelin Synthase 2 antibody (ab272570)

Paraffin-embedded formalin-fixed Human gallbladder tissue stained for Sphingomyelin Synthase 2 using ab272570 at 1/500 in immunohistochemical analysis.



Paraffin-embedded formalin-fixed Human skeletal muscle tissue stained for Sphingomyelin Synthase 2 using ab272570 1/500 in immunohistochemical analysis.

Immunohistochemistry (Formalin/PFA-fixed paraffin-embedded sections) - Anti-Sphingomyelin Synthase 2 antibody (ab272570)

Please note: All products are "FOR RESEARCH USE ONLY. NOT FOR USE IN DIAGNOSTIC PROCEDURES"

Our Abpromise to you: Quality guaranteed and expert technical support

- Replacement or refund for products not performing as stated on the datasheet
- Valid for 12 months from date of delivery
- Response to your inquiry within 24 hours

- We provide support in Chinese, English, French, German, Japanese and Spanish
- Extensive multi-media technical resources to help you
- We investigate all quality concerns to ensure our products perform to the highest standards

If the product does not perform as described on this datasheet, we will offer a refund or replacement. For full details of the Abpromise, please visit <https://www.abcam.com/abpromise> or contact our technical team.

Terms and conditions

- Guarantee only valid for products bought direct from Abcam or one of our authorized distributors