



Product datasheet

Anti-SPON2 antibody ab221649

2 Images

Overview

Product name	Anti-SPON2 antibody
Description	Rabbit polyclonal to SPON2
Host species	Rabbit
Tested applications	Suitable for: ICC/IF, WB
Species reactivity	Reacts with: Human
Immunogen	Recombinant fragment corresponding to Human SPON2 aa 146-218. Sequence: HSLVSFVVRVPSDWFVGVDSLDCGDRWREQAA LDLYPEYDAGTDSGF TFSSPNFATIPQDTVTEITSSSP Database link: Q9BUD6 <div style="float: right;">  Run BLAST with  Run BLAST with </div>
Positive control	ICC/IF: HaCaT cells. WB: Human liver lysate.

Properties

Form	Liquid
Storage instructions	Shipped at 4°C. Store at +4°C short term (1-2 weeks). Upon delivery aliquot. Store at -20°C long term. Avoid freeze / thaw cycle.
Storage buffer	pH: 7.2 Preservative: 0.02% Sodium azide Constituents: PBS, 40% Glycerol
Purity	Immunogen affinity purified
Clonality	Polyclonal
Isotype	IgG

Applications

Our [Abpromise guarantee](#) covers the use of **ab221649** in the following tested applications.

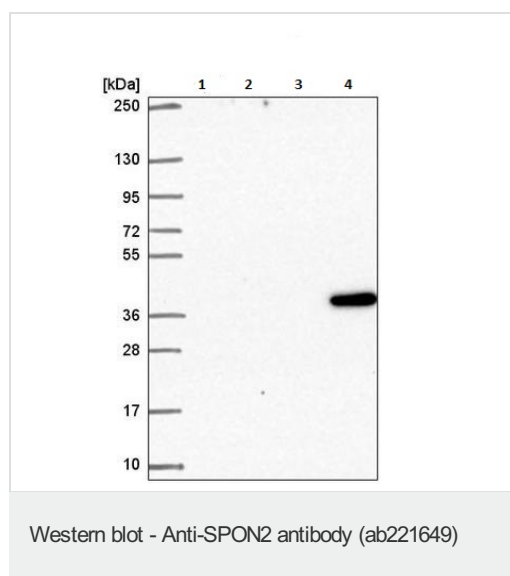
The application notes include recommended starting dilutions; optimal dilutions/concentrations should be determined by the end user.

Application	Abreviews	Notes
ICC/IF		Use a concentration of 1 - 4 µg/ml. Fixation/Permeabilization: PFA/Triton X-100.
WB		1/250 - 1/500. Predicted molecular weight: 36 kDa.

Target

Function	Cell adhesion protein that promotes adhesion and outgrowth of hippocampal embryonic neurons. Binds directly to bacteria and their components and functions as an opsonin for macrophage phagocytosis of bacteria. Essential in the initiation of the innate immune response and represents a unique pattern-recognition molecule in the ECM for microbial pathogens (By similarity). Binds bacterial lipopolysaccharide (LPS).
Tissue specificity	Expressed in normal lung tissue but not in lung carcinoma cell lines.
Sequence similarities	Contains 1 spondin domain. Contains 1 TSP type-1 domain.
Cellular localization	Secreted > extracellular space > extracellular matrix.

Images



All lanes : Anti-SPON2 antibody (ab221649) at 1/250 dilution

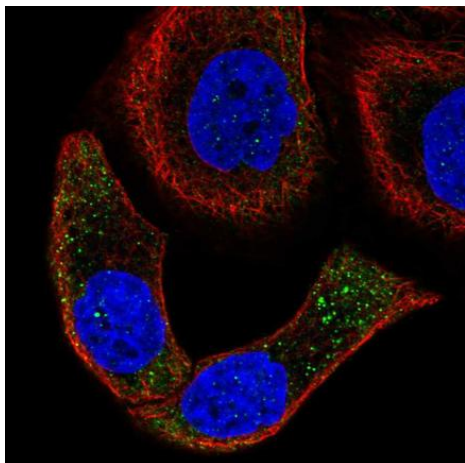
Lane 1 : RT4 (human urinary bladder cancer cell line) cell lysate

Lane 2 : U-251 MG (human brain glioma cell line) cell lysate

Lane 3 : Human plasma

Lane 4 : Human liver lysate

Predicted band size: 36 kDa



Immunocytochemistry/ Immunofluorescence - Anti-SPON2 antibody (ab221649)

PFA-fixed, Triton X-100 permeabilized HaCaT (human keratinocyte cell line) cells stained for SPON2 (green) using ab221649 at 4 $\mu\text{g/ml}$ in ICC/IF.

Please note: All products are "FOR RESEARCH USE ONLY. NOT FOR USE IN DIAGNOSTIC PROCEDURES"

Our Abpromise to you: Quality guaranteed and expert technical support

- Replacement or refund for products not performing as stated on the datasheet
- Valid for 12 months from date of delivery
- Response to your inquiry within 24 hours
- We provide support in Chinese, English, French, German, Japanese and Spanish
- Extensive multi-media technical resources to help you
- We investigate all quality concerns to ensure our products perform to the highest standards

If the product does not perform as described on this datasheet, we will offer a refund or replacement. For full details of the Abpromise, please visit <https://www.abcam.com/abpromise> or contact our technical team.

Terms and conditions

- Guarantee only valid for products bought direct from Abcam or one of our authorized distributors