

Product datasheet

Anti-SPRR1α antibody ab125374

★★★★☆ 3 Abreviews 1 References 3 Images

Overview

Product name	Anti-SPRR1α antibody
Description	Rabbit polyclonal to SPRR1α
Host species	Rabbit
Tested applications	Suitable for: WB
Species reactivity	Reacts with: Human Predicted to work with: Mouse, Rat, Rabbit, Horse, Cow, Pig
Immunogen	Synthetic peptide corresponding to Human SPRR1α aa 40-89 (C terminal). Sequence: PCHPKVPEPCHPKVPEPCQPKVPEPCQPKVPEPCPSTV TPAPAQQKTKQK Database link: P35321 Run BLAST with Run BLAST with
Positive control	WB: MCF7 and HT1080 cell lysate; Liver tumor lysate.
General notes	<p>Reproducibility is key to advancing scientific discovery and accelerating scientists' next breakthrough.</p> <p>Abcam is leading the way with our range of recombinant antibodies, knockout-validated antibodies and knockout cell lines, all of which support improved reproducibility.</p> <p>We are also planning to innovate the way in which we present recommended applications and species on our product datasheets, so that only applications & species that have been tested in our own labs, our suppliers or by selected trusted collaborators are covered by our Abpromise™ guarantee.</p> <p>In preparation for this, we have started to update the applications & species that this product is Abpromise guaranteed for.</p> <p>We are also updating the applications & species that this product has been “predicted to work with,” however this information is not covered by our Abpromise guarantee.</p> <p>Applications & species from publications and Abreviews that have not been tested in our own labs or in those of our suppliers are not covered by the Abpromise guarantee.</p> <p>Please check that this product meets your needs before purchasing. If you have any questions, special requirements or concerns, please send us an inquiry and/or contact our Support team ahead of purchase. Recommended alternatives for this product can be found below, as well as</p>

customer reviews and Q&As.

Properties

Form	Liquid
Storage instructions	Shipped at 4°C. Store at +4°C short term (1-2 weeks). Upon delivery aliquot. Store at -20°C long term. Avoid freeze / thaw cycle.
Storage buffer	pH: 7.2 Preservative: 0.09% Sodium azide Constituents: 2% Sucrose, PBS
Purity	Immunogen affinity purified
Clonality	Polyclonal
Isotype	IgG

Applications

Our [Abpromise guarantee](#) covers the use of **ab125374** in the following tested applications.

The application notes include recommended starting dilutions; optimal dilutions/concentrations should be determined by the end user.

Application	Abreviews	Notes
WB		Use a concentration of 1 µg/ml. Predicted molecular weight: 10 kDa. Good results were obtained when blocked with 5% non-fat dry milk in 0.05% PBS-T.

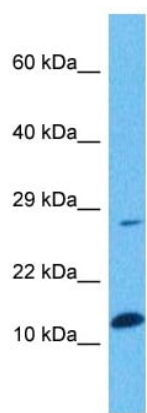
Target

Relevance

The ability of neurons to regenerate an axon after injury is determined by both the surrounding environment and factors intrinsic to the damaged neuron. Neuronal SPRR1A is likely a significant contributor to successful nerve regeneration. The small proline-rich repeat protein 1A (SPRR1A) is not detectable in uninjured neurons but is induced by >60-fold after peripheral axonal damage being localized to injured neurons and axons. SPRR1A is one of a group of epithelial differentiation genes, including s100c and p21/waf, that are cocurrently induced in neurons by axotomy. Overexpressed SPRR1A colocalizes with F-actin in membrane ruffles and augments axonal outgrowth on a range of substrates. In axotomized sensory neurons, reduction of SPRR1A function restricts axonal outgrowth.

Cellular localization Cytoplasmic

Images

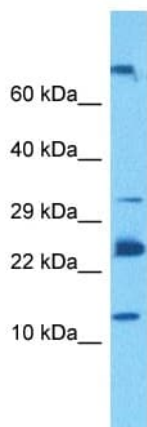


Western blot - Anti-SPRR1a antibody (ab125374)

Anti-SPRR1a antibody (ab125374) at 1 μ g/ml + Liver tumor lysate at 10 μ g

Predicted band size: 10 kDa

Western blot analysis of liver tumor lysate labeling SPRR1a with ab125374.

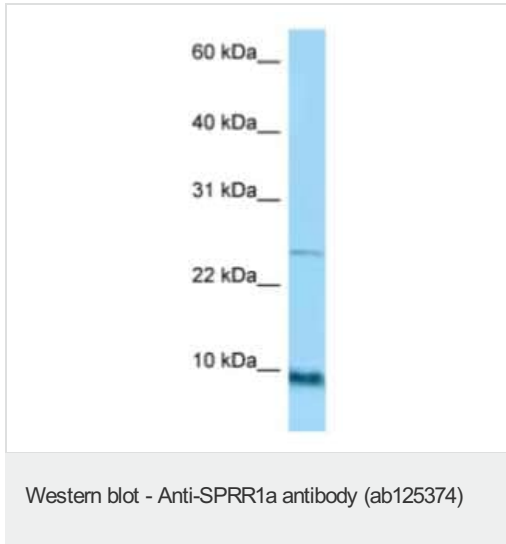


Western blot - Anti-SPRR1a antibody (ab125374)

Anti-SPRR1a antibody (ab125374) at 0.5 μ g/ml + MCF7 cell lysate at 10 μ g

Predicted band size: 10 kDa

Western blot analysis of MCF7 cell lysate labeling SPRR1A with ab125374.



Anti-SPRR1a antibody (ab125374) at 1 µg/ml + HT1080 cell lysate
at 10 µg

Predicted band size: 10 kDa

Gel concentration: 10-20%

Please note: All products are "FOR RESEARCH USE ONLY. NOT FOR USE IN DIAGNOSTIC PROCEDURES"

Our Abpromise to you: Quality guaranteed and expert technical support

- Replacement or refund for products not performing as stated on the datasheet
- Valid for 12 months from date of delivery
- Response to your inquiry within 24 hours
- We provide support in Chinese, English, French, German, Japanese and Spanish
- Extensive multi-media technical resources to help you
- We investigate all quality concerns to ensure our products perform to the highest standards

If the product does not perform as described on this datasheet, we will offer a refund or replacement. For full details of the Abpromise, please visit <https://www.abcam.com/abpromise> or contact our technical team.

Terms and conditions

- Guarantee only valid for products bought direct from Abcam or one of our authorized distributors