


Product datasheet

Anti-SQSTM1 / p62 antibody ab227207

4 Images

Overview

<b>Product name</b>	Anti-SQSTM1 / p62 antibody
<b>Description</b>	Rabbit polyclonal to SQSTM1 / p62
<b>Host species</b>	Rabbit
<b>Tested applications</b>	<b>Suitable for:</b> WB, ICC/IF
<b>Species reactivity</b>	<b>Reacts with:</b> Mouse, Human <b>Predicted to work with:</b> Sheep, Cow, Rhesus monkey 
<b>Immunogen</b>	Recombinant fragment within Human SQSTM1/ p62 (internal sequence). The exact sequence is proprietary. Database link: <a href="#">Q13501</a>
<b>Positive control</b>	WB: HepG2 whole cell extract; Raji, K562, HL-60 and NCI-H929 whole cell lysates. ICC/IF: HeLa cells.

Properties

<b>Form</b>	Liquid
<b>Storage instructions</b>	Shipped at 4°C. Store at +4°C short term (1-2 weeks). Upon delivery aliquot. Store at -20°C long term. Avoid freeze / thaw cycle.
<b>Storage buffer</b>	pH: 7.00 Preservative: 0.01% Thimerosal (merthiolate) Constituents: 1% BSA, 20% Glycerol, PBS
<b>Purity</b>	Immunogen affinity purified
<b>Clonality</b>	Polyclonal
<b>Isotype</b>	IgG

Applications

Our [Abpromise guarantee](#) covers the use of **ab227207** in the following tested applications.

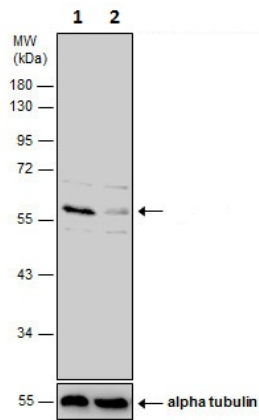
The application notes include recommended starting dilutions; optimal dilutions/concentrations should be determined by the end user.

Application	Abreviews	Notes
WB		1/1000 - 1/10000. Predicted molecular weight: 47 kDa.
ICC/IF		1/100 - 1/1000.

## Target

<b>Function</b>	Adapter protein which binds ubiquitin and may regulate the activation of NFkB1 by TNF-alpha, nerve growth factor (NGF) and interleukin-1. May play a role in titin/TTN downstream signaling in muscle cells. May regulate signaling cascades through ubiquitination. Adapter that mediates the interaction between TRAF6 and CYLD (By similarity). May be involved in cell differentiation, apoptosis, immune response and regulation of K(+) channels.
<b>Tissue specificity</b>	Ubiquitously expressed.
<b>Involvement in disease</b>	Defects in SQSTM1 are a cause of Paget disease of bone (PDB) [MIM:602080]. PDB is a metabolic bone disease affecting the axial skeleton and characterized by focal areas of increased and disorganized bone turn-over due to activated osteoclasts. Manifestations of the disease include bone pain, deformity, pathological fractures, deafness, neurological complications and increased risk of osteosarcoma. PDB is a chronic disease affecting 2 to 3% of the population above the age of 40 years.
<b>Sequence similarities</b>	Contains 1 OPR domain. Contains 1 UBA domain. Contains 1 ZZ-type zinc finger.
<b>Domain</b>	The UBA domain binds specifically 'Lys-63'-linked polyubiquitin chains of polyubiquitinated substrates. Mediates the interaction with TRIM55. The OPR domain mediates homooligomerization and interactions with PRKCZ, PRKCI, MAP2K5 and NBR1. The ZZ-type zinc finger mediates the interaction with RIPK1.
<b>Post-translational modifications</b>	Phosphorylated. May be phosphorylated by PRKCZ (By similarity). Phosphorylated in vitro by TTN.
<b>Cellular localization</b>	Cytoplasm. Late endosome. Nucleus. Sarcomere (By similarity). In cardiac muscles localizes to the sarcomeric band (By similarity). Localizes to late endosomes. May also localize to the nucleus. Accumulates in neurofibrillary tangles and in Lewy bodies of neurons from individuals with Alzheimer and Parkinson disease respectively. Enriched in Rosenthal fibers of pilocytic astrocytoma. In liver cells, accumulates in Mallory bodies associated with alcoholic hepatitis, Wilson disease, indian childhood cirrhosis and in hyaline bodies associated with hepatocellular carcinoma.

## Images



Western blot - Anti-SQSTM1 / p62 antibody  
(ab227207)

**All lanes :** Anti-SQSTM1 / p62 antibody (ab227207) at 1/7000 dilution

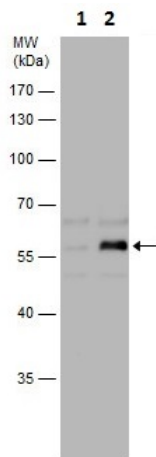
**Lane 1 :** Non-transfected HepG2 (human liver hepatocellular carcinoma cell line) whole cell extract

**Lane 2 :** SQSTM1 / p62 shRNA transfected HeLa whole cell extract

Lysates/proteins at 30 µg per lane.

**Predicted band size:** 47 kDa

10% SDS-PAGE gel.



Western blot - Anti-SQSTM1 / p62 antibody  
(ab227207)

**All lanes :** Anti-SQSTM1 / p62 antibody (ab227207) at 1/10000 dilution

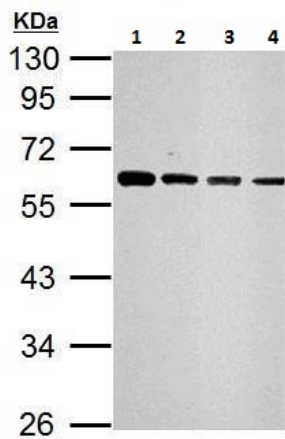
**Lane 1 :** Untreated HepG2 (human liver hepatocellular carcinoma cell line) whole cell extract

**Lane 2 :** HepG2, treated with 3 µM thapsigargin for 12 hours, whole cell extract

Lysates/proteins at 30 µg per lane.

**Predicted band size:** 47 kDa

10% SDS-PAGE gel.



Western blot - Anti-SQSTM1 / p62 antibody (ab227207)

**All lanes :** Anti-SQSTM1 / p62 antibody (ab227207) at 1/10000 dilution

**Lane 1 :** Raji (human Burkitt's lymphoma cell line) whole cell lysate

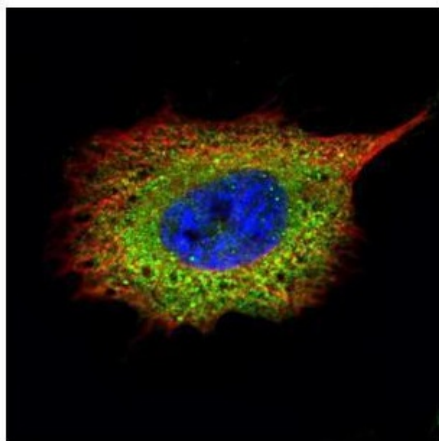
**Lane 2 :** K562 (human chronic myelogenous leukemia cell line from bone marrow) whole cell lysate

**Lane 3 :** HL-60 (human promyelocytic leukemia cell line) whole cell lysate

**Lane 4 :** NCI-H929 whole cell lysate

Lysates/proteins at 30 µg per lane.

**Predicted band size:** 47 kDa



Immunocytochemistry/ Immunofluorescence - Anti-SQSTM1 / p62 antibody (ab227207)

Paraformaldehyde-fixed HeLa (human epithelial cell line from cervix adenocarcinoma) cells stained for SQSTM1 / p62 (green) using ab227207 at 1/500 dilution in ICC/IF.

Alpha-Tubulin was detected with an anti-alpha-Tubulin antibody at 1/2000 dilution (red).

**Please note:** All products are "FOR RESEARCH USE ONLY. NOT FOR USE IN DIAGNOSTIC PROCEDURES"

#### Our Abpromise to you: Quality guaranteed and expert technical support

- Replacement or refund for products not performing as stated on the datasheet
- Valid for 12 months from date of delivery

- Response to your inquiry within 24 hours
- We provide support in Chinese, English, French, German, Japanese and Spanish
- Extensive multi-media technical resources to help you
- We investigate all quality concerns to ensure our products perform to the highest standards

If the product does not perform as described on this datasheet, we will offer a refund or replacement. For full details of the Abpromise, please visit <https://www.abcam.com/abpromise> or contact our technical team.

### **Terms and conditions**

---

- Guarantee only valid for products bought direct from Abcam or one of our authorized distributors