

Product datasheet

Anti-SREBP2 antibody ab112046

★★★★★ 1 Abreviews 3 References 2 Images

Overview

Product name	Anti-SREBP2 antibody
Description	Rabbit polyclonal to SREBP2
Host species	Rabbit
Tested applications	Suitable for: WB, IP
Species reactivity	Reacts with: Human Predicted to work with: Rat, Horse, Chicken, Guinea pig, Cow, Dog, Pig, Chimpanzee, Ferret, Rhesus monkey, Gorilla, Chinese hamster, Orangutan
Immunogen	Synthetic peptide corresponding to Human SREBP2 aa 300-350. Database link: Q12772
Positive control	HeLa and 293T whole cell lysate
General notes	<p>Reproducibility is key to advancing scientific discovery and accelerating scientists' next breakthrough.</p> <p>Abcam is leading the way with our range of recombinant antibodies, knockout-validated antibodies and knockout cell lines, all of which support improved reproducibility.</p> <p>We are also planning to innovate the way in which we present recommended applications and species on our product datasheets, so that only applications & species that have been tested in our own labs, our suppliers or by selected trusted collaborators are covered by our Abpromise™ guarantee.</p> <p>In preparation for this, we have started to update the applications & species that this product is Abpromise guaranteed for.</p> <p>We are also updating the applications & species that this product has been “predicted to work with,” however this information is not covered by our Abpromise guarantee.</p> <p>Applications & species from publications and Abreviews that have not been tested in our own labs or in those of our suppliers are not covered by the Abpromise guarantee.</p> <p>Please check that this product meets your needs before purchasing. If you have any questions, special requirements or concerns, please send us an inquiry and/or contact our Support team ahead of purchase. Recommended alternatives for this product can be found below, as well as customer reviews and Q&As.</p>

Properties

Form	Liquid
Storage instructions	Shipped at 4°C. Upon delivery aliquot and store at -20°C. Avoid freeze / thaw cycles.
Storage buffer	pH: 7.00 Preservative: 0.09% Sodium azide Constituent: 99% Tris citrate/phosphate
Purity	Immunogen affinity purified
Clonality	Polyclonal
Isotype	IgG

Applications

Our [Abpromise guarantee](#) covers the use of **ab112046** in the following tested applications.

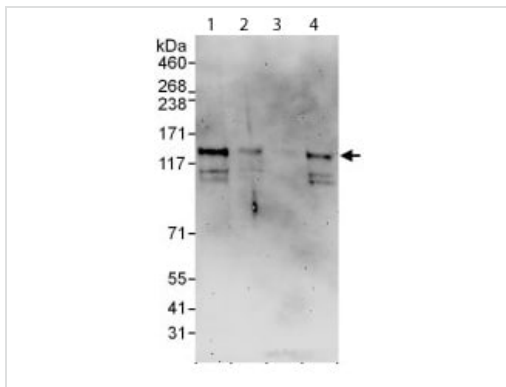
The application notes include recommended starting dilutions; optimal dilutions/concentrations should be determined by the end user.

Application	Abreviews	Notes
WB	★★★★☆	1/1000 - 1/5000. Predicted molecular weight: 124 kDa.
IP		Use at 2-10 µg/mg of lysate.

Target

Function	Transcriptional activator required for lipid homeostasis. Regulates transcription of the LDL receptor gene as well as the cholesterol and to a lesser degree the fatty acid synthesis pathway (By similarity). Binds the sterol regulatory element 1 (SRE-1) (5'-ATCACCCAC-3') found in the flanking region of the LDRL and HMG-CoA synthase genes.
Tissue specificity	Ubiquitously expressed in adult and fetal tissues.
Sequence similarities	Belongs to the SREBP family. Contains 1 basic helix-loop-helix (bHLH) domain.
Post-translational modifications	At low cholesterol the SCAP/SREBP complex is recruited into COPII vesicles for export from the ER. In the Golgi complex SREBPs are cleaved sequentially by site-1 and site-2 protease. The first cleavage by site-1 protease occurs within the luminal loop, the second cleavage by site-2 protease occurs within the first transmembrane domain and releases the transcription factor from the Golgi membrane. Apoptosis triggers cleavage by the cysteine proteases caspase-3 and caspase-7.
Cellular localization	Nucleus and Endoplasmic reticulum membrane. Golgi apparatus membrane. Cytoplasmic vesicle > COPII-coated vesicle membrane. Moves from the endoplasmic reticulum to the Golgi in the absence of sterols.

Images



Western blot - Anti-SREBP2 antibody (ab112046)

All lanes : Anti-SREBP2 antibody (ab112046) at 0.4 $\mu\text{g/ml}$

Lane 1 : HeLa whole cell lysate at 50 μg

Lane 2 : HeLa whole cell lysate at 15 μg

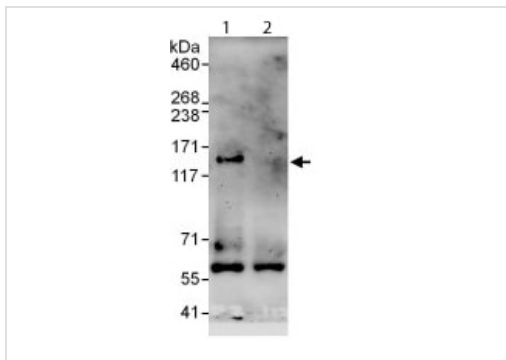
Lane 3 : HeLa whole cell lysate at 5 μg

Lane 4 : 293T whole cell lysate at 50 μg

Developed using the ECL technique.

Predicted band size: 124 kDa

Exposure time: 3 minutes



Immunoprecipitation - Anti-SREBP2 antibody (ab112046)

Detection of SREBP2 by Western Blot of Immunoprecipitate.

Lane 1: ab112046 at 1 $\mu\text{g/ml}$ staining SREBP2 in HeLa whole cell lysate immunoprecipitated using ab112046 at 6 $\mu\text{g/mg}$ lysate (1 mg/IP; 20% of IP loaded/lane).

Lane 2: Control IgG

Detection: Chemiluminescence with exposure time of 30 seconds.

Please note: All products are "FOR RESEARCH USE ONLY. NOT FOR USE IN DIAGNOSTIC PROCEDURES"

Our Abpromise to you: Quality guaranteed and expert technical support

- Replacement or refund for products not performing as stated on the datasheet
- Valid for 12 months from date of delivery
- Response to your inquiry within 24 hours
- We provide support in Chinese, English, French, German, Japanese and Spanish
- Extensive multi-media technical resources to help you
- We investigate all quality concerns to ensure our products perform to the highest standards

If the product does not perform as described on this datasheet, we will offer a refund or replacement. For full details of the Abpromise, please visit <https://www.abcam.com/abpromise> or contact our technical team.

Terms and conditions

- Guarantee only valid for products bought direct from Abcam or one of our authorized distributors