

Product datasheet

Anti-SRPK1 antibody ab90527

★★★★☆ 1 Abreviews 4 References 3 Images

Overview

| | |
|----------------------------|---|
| Product name | Anti-SRPK1 antibody |
| Description | Rabbit polyclonal to SRPK1 |
| Host species | Rabbit |
| Tested applications | Suitable for: WB, IP, IHC-P |
| Species reactivity | Reacts with: Mouse, Human Predicted to work with: Rat, Rabbit, Horse, Guinea pig, Dog, Pig, Ferret, Rhesus monkey, Gorilla, Orangutan, Elephant |
| Immunogen | Synthetic peptide within Human SRPK1 aa 275-325 (internal sequence). The exact sequence is proprietary. (GeneID 6732) Database link: NP_003128.3 |

Properties

| | |
|-----------------------------|---|
| Form | Liquid |
| Storage instructions | Shipped at 4°C. Upon delivery aliquot and store at -20°C. Avoid freeze / thaw cycles. |
| Storage buffer | pH: 6.8 Preservative: 0.09% Sodium azide Constituents: Tris buffered saline, 0.1% BSA |
| Purity | Immunogen affinity purified |
| Clonality | Polyclonal |
| Isotype | IgG |

Applications

Our [Abpromise guarantee](#) covers the use of **ab90527** in the following tested applications.

The application notes include recommended starting dilutions; optimal dilutions/concentrations should be determined by the end user.

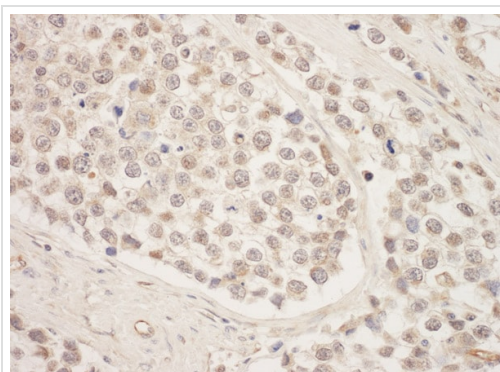
| Application | Abreviews | Notes |
|-------------|-----------|---|
| WB | ★★★★☆ | 1/2000 - 1/10000. Predicted molecular weight: 92 kDa. |

| Application | Abreviews | Notes |
|-------------|-----------|---|
| IP | | Use at 2-5 µg/mg of lysate. |
| IHC-P | | 1/100 - 1/500. Perform heat mediated antigen retrieval with citrate buffer pH 6 before commencing with IHC staining protocol. |

Target

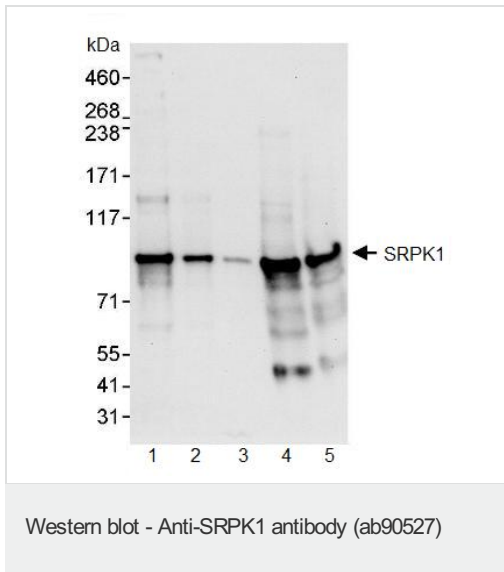
| | |
|------------------------------|---|
| Function | Plays a central role in the regulatory network for splicing, controlling the intranuclear distribution of splicing factors in interphase cells and the reorganization of nuclear speckles during mitosis. Hyperphosphorylates RS domain-containing proteins such as SFRS1, SFRS2 and ZRSR2 on serine residues during metaphase but at lower levels during interphase. Locks onto SFRS1 to form a stable complex and processively phosphorylates the RS domain. Appears to mediate HBV core protein phosphorylation which is a prerequisite for pregenomic RNA encapsidation into viral capsids. |
| Tissue specificity | Isoform 2 is predominantly expressed in the testis but is also present at lower levels in heart, ovary, small intestine, liver, kidney, pancreas and skeletal muscle. Isoform 1 is only seen in the testis, at lower levels than isoform 2. |
| Sequence similarities | Belongs to the protein kinase superfamily. CMGC Ser/Thr protein kinase family. Contains 1 protein kinase domain. |
| Cellular localization | Cytoplasm. Nucleus. |

Images



Immunohistochemistry (Formalin/PFA-fixed paraffin-embedded sections) analysis of human testicular seminoma tissue labelling SRPK1 with ab90527 at 1/200 (1µg/ml). Detection: DAB.

Immunohistochemistry (Formalin/PFA-fixed paraffin-embedded sections) - Anti-SRPK1 antibody (ab90527)



All lanes : Anti-SRPK1 antibody (ab90527) at 0.04 µg/ml

Lane 1 : HeLa whole cell lysate at 50 µg

Lane 2 : HeLa whole cell lysate at 15 µg

Lane 3 : HeLa whole cell lysate at 5 µg

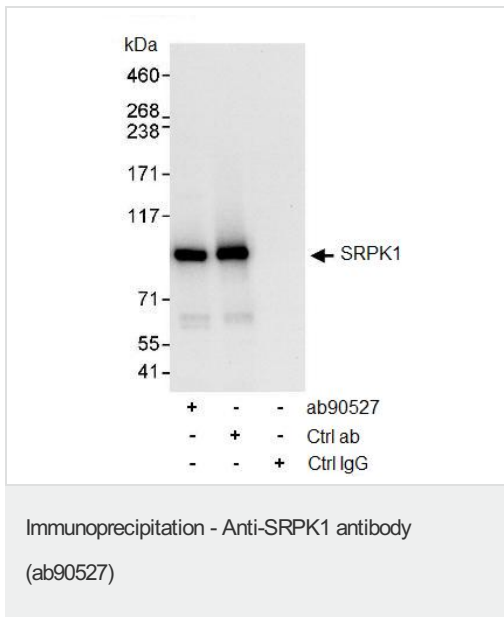
Lane 4 : Whole cell lysate from 293T cells at 50 µg

Lane 5 : Whole cell lysate from NIH 3T3 cells at 50 µg

Developed using the ECL technique.

Predicted band size: 92 kDa

Exposure time: 10 seconds



ab90527 at 1 µg/ml detecting SRPK1 following

immunoprecipitation. Detection by ECL with a 3 second exposure.

Lane 1; IP with ab90527

Lane 2; IP with an antibody to a downstream epitope of SRPK1

Lane 3; IP with control IgG

All antibodies used at at 3 µg/mg lysate for immunoprecipitation. 1 mg of lysate was used for IP and 20% of IP loaded.

Please note: All products are "FOR RESEARCH USE ONLY. NOT FOR USE IN DIAGNOSTIC PROCEDURES"

Our Abpromise to you: Quality guaranteed and expert technical support

- Replacement or refund for products not performing as stated on the datasheet
- Valid for 12 months from date of delivery
- Response to your inquiry within 24 hours
- We provide support in Chinese, English, French, German, Japanese and Spanish

- Extensive multi-media technical resources to help you
- We investigate all quality concerns to ensure our products perform to the highest standards

If the product does not perform as described on this datasheet, we will offer a refund or replacement. For full details of the Abpromise, please visit <https://www.abcam.com/abpromise> or contact our technical team.

Terms and conditions

- Guarantee only valid for products bought direct from Abcam or one of our authorized distributors