

Product datasheet

Anti-STAM2 antibody [EPR8688] ab151545

Recombinant **RabMAb**

[1 References](#) [5 Images](#)

Overview

Product name	Anti-STAM2 antibody [EPR8688]
Description	Rabbit monoclonal [EPR8688] to STAM2
Host species	Rabbit
Tested applications	Suitable for: Flow Cyt (Intra), WB, IHC-P, ICC/IF Unsuitable for: IP
Species reactivity	Reacts with: Human
Immunogen	Synthetic peptide within Human STAM2 aa 350-450. The exact sequence is proprietary.
Positive control	HeLa, 293T and HepG2 cell lysates; Human uterus tissue; HepG2 cells.
General notes	<p>This product is a recombinant monoclonal antibody, which offers several advantages including:</p> <ul style="list-style-type: none"> - High batch-to-batch consistency and reproducibility - Improved sensitivity and specificity - Long-term security of supply - Animal-free production <p>For more information see here.</p> <p>Our RabMAb[®] technology is a patented hybridoma-based technology for making rabbit monoclonal antibodies. For details on our patents, please refer to RabMAb[®] patents.</p> <p>Mouse, Rat: We have preliminary internal testing data to indicate this antibody may not react with these species. Please contact us for more information.</p>

Properties

Form	Liquid
Storage instructions	Shipped at 4°C. Store at -20°C.
Storage buffer	pH: 7.2 Preservative: 0.01% Sodium azide Constituents: 9% PBS, 40% Glycerol (glycerin, glycerine), 0.05% BSA, 50% Tissue culture supernatant
Purity	Protein A purified
Clonality	Monoclonal

Clone number EPR8688
Isotype IgG

Applications

The Abpromise guarantee Our [Abpromise guarantee](#) covers the use of ab151545 in the following tested applications. The application notes include recommended starting dilutions; optimal dilutions/concentrations should be determined by the end user.

Application	Abreviews	Notes
Flow Cyt (Intra)		1/1000 - 1/10000. ab172730 - Rabbit monoclonal IgG, is suitable for use as an isotype control with this antibody.
WB		1/10000 - 1/50000. Predicted molecular weight: 58 kDa.
IHC-P		1/50 - 1/100. Perform heat mediated antigen retrieval with citrate buffer pH 6 before commencing with IHC staining protocol.
ICC/IF		1/100 - 1/250.

Application notes Is unsuitable for IP.

Target

Function Involved in intracellular signal transduction mediated by cytokines and growth factors. Upon IL-2 and GM-CSL stimulation, it plays a role in signaling leading to DNA synthesis and MYC induction. May also play a role in T-cell development. Involved in down-regulation of receptor tyrosine kinase via multivesicular body (MVBs) when complexed with HGS (ESCRT-0 complex). The ESCRT-0 complex binds ubiquitin and acts as sorting machinery that recognizes ubiquitinated receptors and transfers them to further sequential lysosomal sorting/trafficking processes.

Tissue specificity Ubiquitously expressed.

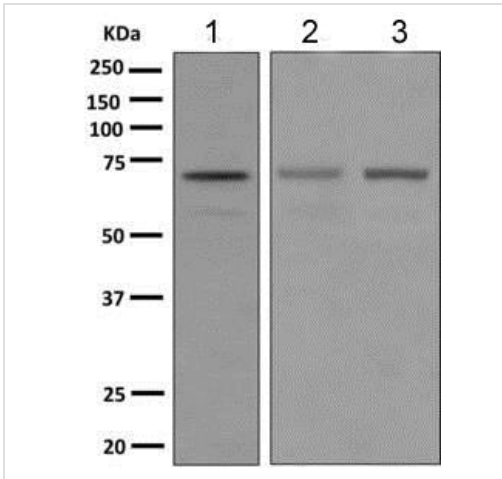
Sequence similarities Belongs to the STAM family.
Contains 1 ITAM domain.
Contains 1 SH3 domain.
Contains 1 UIM (ubiquitin-interacting motif) repeat.
Contains 1 VHS domain.

Domain The VHS and UIM domains mediate the interaction with ubiquitinated proteins.
The SH3 domain mediates the interaction with USP8.
Contains one Pro-Xaa-Val-Xaa-Leu (PxVxL) motif, which is required for interaction with chromoshadow domains. This motif requires additional residues -7, -6, +4 and +5 of the central Val which contact the chromoshadow domain.

Post-translational modifications Phosphorylated in response to IL-2, GM-CSF, EGF and PDGF.

Cellular localization Cytoplasm. Early endosome membrane.

Images



Western blot - Anti-STAM2 antibody [EPR8688] (ab151545)

All lanes : Anti-STAM2 antibody [EPR8688] (ab151545) at 1/10000 dilution

Lane 1 : HeLa cell lysate

Lane 2 : 293T cell lysate

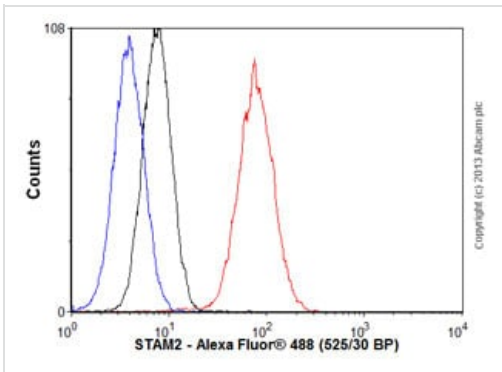
Lane 3 : HepG2 cell lysate

Lysates/proteins at 10 µg per lane.

Secondary

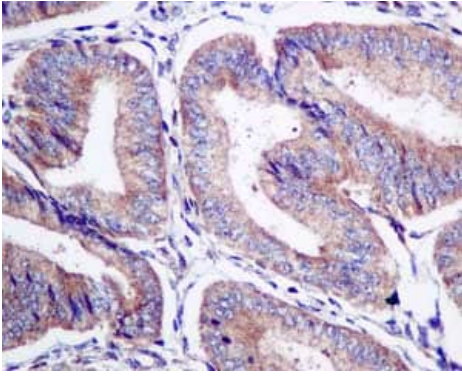
All lanes : Goat anti-rabbit HRP at 1/2000 dilution

Predicted band size: 58 kDa



Flow Cytometry (Intracellular) - Anti-STAM2 antibody [EPR8688] (ab151545)

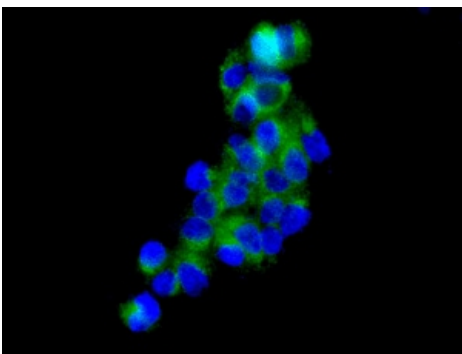
Overlay histogram showing HeLa cells stained with ab151545 (red line). The cells were fixed with 80% methanol (5 min) and then permeabilized with 0.1% PBS-Tween for 20 min. The cells were then incubated in 1x PBS / 10% normal goat serum / 0.3M glycine to block non-specific protein-protein interactions followed by the antibody (ab151545, 1/10000 dilution) for 30 min at 22°C. The secondary antibody used was Alexa Fluor® 488 goat anti-rabbit IgG (H&L) (ab150077) at 1/2000 dilution for 30 min at 22°C. Isotype control antibody (black line) was rabbit IgG (monoclonal) (0.1µg/1x10⁶ cells) used under the same conditions. Unlabelled sample (blue line) was also used as a control. Acquisition of >5,000 events were collected using a 20mW Argon ion laser (488nm) and 525/30 bandpass filter. This antibody gave a positive signal in HeLa cells fixed with 4% paraformaldehyde (10 min)/permeabilized with 0.1% PBS-Tween for 20 min used under the same conditions.



Immunohistochemistry (Formalin/PFA-fixed paraffin-embedded sections) - Anti-STAM2 antibody [EPR8688] (ab151545)

Immunohistochemical analysis of paraffin-embedded Human uterus tissue labeling STAM2 with ab151545 at 1/50 dilution.

Perform heat mediated antigen retrieval with citrate buffer pH 6 before commencing with IHC staining protocol.



Immunocytochemistry/ Immunofluorescence - Anti-STAM2 antibody [EPR8688] (ab151545)

Immunofluorescent analysis of HepG2 cells labeling STAM2 with ab151545 at 1/100 dilution.

Why choose a recombinant antibody?



Research with confidence
Consistent and reproducible results



Long-term and scalable supply
Recombinant technology



Success from the first experiment
Confirmed specificity



Ethical standards compliant
Animal-free production

Anti-STAM2 antibody [EPR8688] (ab151545)

Please note: All products are "FOR RESEARCH USE ONLY. NOT FOR USE IN DIAGNOSTIC PROCEDURES"

Our Abpromise to you: Quality guaranteed and expert technical support

- Replacement or refund for products not performing as stated on the datasheet
- Valid for 12 months from date of delivery
- Response to your inquiry within 24 hours

- We provide support in Chinese, English, French, German, Japanese and Spanish
- Extensive multi-media technical resources to help you
- We investigate all quality concerns to ensure our products perform to the highest standards

If the product does not perform as described on this datasheet, we will offer a refund or replacement. For full details of the Abpromise, please visit <https://www.abcam.com/abpromise> or contact our technical team.

Terms and conditions

- Guarantee only valid for products bought direct from Abcam or one of our authorized distributors