

Product datasheet

Anti-STAT4 antibody [EP1900Y] ab68156

Recombinant RabMAb

★★★★★ 2 Abreviews 4 References 4 Images

Overview

Product name	Anti-STAT4 antibody [EP1900Y]
Description	Rabbit monoclonal [EP1900Y] to STAT4
Host species	Rabbit
Tested applications	Suitable for: WB, IP, IHC-P, ICC, Flow Cyt
Species reactivity	Reacts with: Human
Immunogen	Synthetic peptide within Human STAT4 aa 700 to the C-terminus. The exact sequence is proprietary. Database link: Q14765
Positive control	WB: Daudi, K562 and Hela cell lysates. IHC-P: Human tonsil tissue sections. ICC: HeLa cells
General notes	Mouse, Rat: We have preliminary internal testing data to indicate this antibody may not react with these species. Please contact us for more information.

This product is a recombinant monoclonal antibody, which offers several advantages including:

- High batch-to-batch consistency and reproducibility
- Improved sensitivity and specificity
- Long-term security of supply
- Animal-free production

For more information [see here](#).

Our RabMAb[®] technology is a patented hybridoma-based technology for making rabbit monoclonal antibodies. For details on our patents, please refer to [RabMAb[®] patents](#).

Reproducibility is key to advancing scientific discovery and accelerating scientists' next breakthrough.

Abcam is leading the way with our range of recombinant antibodies, knockout-validated antibodies and knockout cell lines, all of which support improved reproducibility.

We are also planning to innovate the way in which we present recommended applications and species on our product datasheets, so that only applications & species that have been tested in our own labs, our suppliers or by selected trusted collaborators are covered by our Abpromise[™] guarantee.

In preparation for this, we have started to update the applications & species that this product is Abpromise guaranteed for.

We are also updating the applications & species that this product has been “predicted to work with,” however this information is not covered by our Abpromise guarantee.

Applications & species from publications and Abreviews that have not been tested in our own labs or in those of our suppliers are not covered by the Abpromise guarantee.

Please check that this product meets your needs before purchasing. If you have any questions, special requirements or concerns, please send us an inquiry and/or contact our Support team ahead of purchase. Recommended alternatives for this product can be found below, as well as customer reviews and Q&As.

Properties

Form	Liquid
Storage instructions	Shipped at 4°C. Upon delivery aliquot and store at -20°C. Avoid freeze / thaw cycles.
Storage buffer	pH: 7.2 Preservative: 0.05% Sodium azide Constituents: 0.1% BSA, 40% Glycerol (glycerin, glycerine), 9.85% Tris glycine, 50% Tissue culture supernatant
Purity	Tissue culture supernatant
Clonality	Monoclonal
Clone number	EP1900Y
Isotype	IgG

Applications

Our [Abpromise guarantee](#) covers the use of **ab68156** in the following tested applications.

The application notes include recommended starting dilutions; optimal dilutions/concentrations should be determined by the end user.

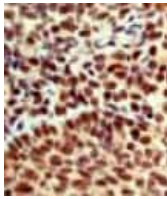
Application	Abreviews	Notes
WB		1/500 - 1/5000. Detects a band of approximately 30, 86 kDa (predicted molecular weight: 86 kDa).
IP	★★★★☆	1/20.
IHC-P		1/100 - 1/250. Perform heat mediated antigen retrieval with citrate buffer pH 6 before commencing with IHC staining protocol.
ICC		1/100 - 1/250.
Flow Cyt	★★★★★	1/80. ab172730 - Rabbit monoclonal IgG, is suitable for use as an isotype control with this antibody.

Target

Function	Carries out a dual function: signal transduction and activation of transcription. Involved in IL12 signaling.
-----------------	---

Involvement in disease	Systemic lupus erythematosus 11 Rheumatoid arthritis
Sequence similarities	Belongs to the transcription factor STAT family. Contains 1 SH2 domain.
Post-translational modifications	Tyrosine phosphorylated. Serine phosphorylation is also required for maximal transcriptional activity.
Cellular localization	Cytoplasm. Nucleus. Translocated into the nucleus in response to phosphorylation.

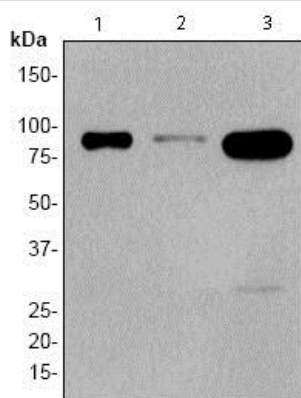
Images



Immunohistochemistry (Formalin/PFA-fixed paraffin-embedded sections) - Anti-STAT4 antibody [EP1900Y] (ab68156)

ab68156, at 1/100 dilution, staining STAT4 in paraffin embedded human tonsil tissue sections by Immunohistochemistry

Perform heat mediated antigen retrieval with citrate buffer pH 6 before commencing with IHC staining protocol.



Western blot - Anti-STAT4 antibody [EP1900Y] (ab68156)

All lanes : Anti-STAT4 antibody [EP1900Y] (ab68156) at 1/1000 dilution

Lane 1 : Daudi cell lysate

Lane 2 : K562 cell lysate

Lane 3 : Hela cell lysate

Lysates/proteins at 10 µg per lane.

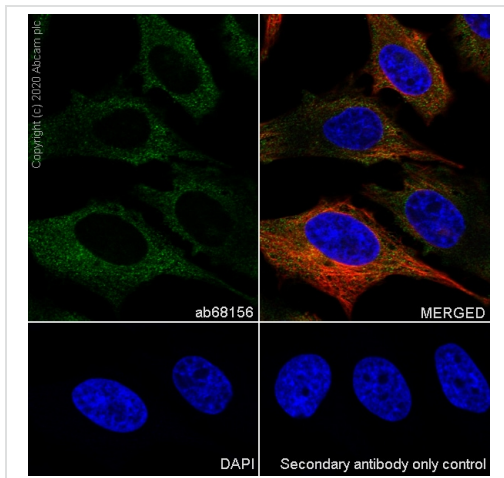
Secondary

All lanes : HRP labelled goat anti-rabbit at 1/2000 dilution

Predicted band size: 86 kDa

Observed band size: 86 kDa

Additional bands at: 30 kDa. We are unsure as to the identity of these extra bands.







Immunocytochemistry analysis of HeLa (human cervix adenocarcinoma epithelial cell) labeling STAT4 with purified ab68156 at 1/50 dilution (9 µg/ml). Cells were fixed with 4% Paraformaldehyde and permeabilised with 0.1% tritonX-100. Goat anti rabbit IgG (Alexa Fluor® 488, ab150077) at 1/1000 (2 µg/ml) was used as the secondary antibody. ab195889 Anti-alpha Tubulin antibody [DM1A] - Microtubule Marker (Alexa Fluor® 594) 1/200 (2.16 µg/ml) was used as counterstain. Nuclei were stained blue with DAPI.

Negative control: PBS instead of the primary antibody.

Immunocytochemistry - Anti-STAT4 antibody [EP1900Y] (ab68156)

Why choose a recombinant antibody?

 <p>Research with confidence Consistent and reproducible results</p>	 <p>Long-term and scalable supply Recombinant technology</p>
 <p>Success from the first experiment Confirmed specificity</p>	 <p>Ethical standards compliant Animal-free production</p>

Anti-STAT4 antibody [EP1900Y] (ab68156)

Please note: All products are "FOR RESEARCH USE ONLY. NOT FOR USE IN DIAGNOSTIC PROCEDURES"

Our Abpromise to you: Quality guaranteed and expert technical support

- Replacement or refund for products not performing as stated on the datasheet
- Valid for 12 months from date of delivery
- Response to your inquiry within 24 hours
- We provide support in Chinese, English, French, German, Japanese and Spanish
- Extensive multi-media technical resources to help you

- We investigate all quality concerns to ensure our products perform to the highest standards

If the product does not perform as described on this datasheet, we will offer a refund or replacement. For full details of the Abpromise, please visit <https://www.abcam.com/abpromise> or contact our technical team.

Terms and conditions

- Guarantee only valid for products bought direct from Abcam or one of our authorized distributors