

Product datasheet

Anti-STAT5 antibody [9F7] ab230670

1 References 6 Images

Overview

Product name	Anti-STAT5 antibody [9F7]
Description	Mouse monoclonal [9F7] to STAT5
Host species	Mouse
Tested applications	Suitable for: WB, IHC-P, Flow Cyt, ICC/IF
Species reactivity	Reacts with: Rat, Dog, Human, Monkey
Immunogen	Recombinant full length protein corresponding to Human STAT5. Database link: P42229
Positive control	WB: STAT5-transfected HEK-293T cell lysate; HepG2, HeLa, SVT2, COS-7, Jurkat, MDCK, PC-12 and MCF7 cell extracts. IHC-P: HUMAN testis tissue. ICC/IF: COS7 cells. Flow Cyt: HeLa and Jurkat cells.
General notes	<p>Reproducibility is key to advancing scientific discovery and accelerating scientists' next breakthrough.</p> <p>Abcam is leading the way with our range of recombinant antibodies, knockout-validated antibodies and knockout cell lines, all of which support improved reproducibility.</p> <p>We are also planning to innovate the way in which we present recommended applications and species on our product datasheets, so that only applications & species that have been tested in our own labs, our suppliers or by selected trusted collaborators are covered by our Abpromise™ guarantee.</p> <p>In preparation for this, we have started to update the applications & species that this product is Abpromise guaranteed for.</p> <p>We are also updating the applications & species that this product has been “predicted to work with,” however this information is not covered by our Abpromise guarantee.</p> <p>Applications & species from publications and Abreviews that have not been tested in our own labs or in those of our suppliers are not covered by the Abpromise guarantee.</p> <p>Please check that this product meets your needs before purchasing. If you have any questions, special requirements or concerns, please send us an inquiry and/or contact our Support team ahead of purchase. Recommended alternatives for this product can be found below, as well as customer reviews and Q&As.</p>

Properties

Form	Liquid
Storage instructions	Shipped at 4°C. Store at +4°C short term (1-2 weeks). Upon delivery aliquot. Store at -20°C long term. Avoid freeze / thaw cycle.
Storage buffer	pH: 7.30 Preservative: 0.02% Sodium azide Constituents: PBS, 1% BSA, 50% Glycerol
Purity	Protein G purified
Clonality	Monoclonal
Clone number	9F7
Isotype	IgG1

Applications

Our [Abpromise guarantee](#) covers the use of **ab230670** in the following tested applications.

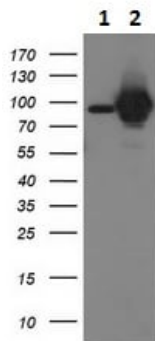
The application notes include recommended starting dilutions; optimal dilutions/concentrations should be determined by the end user.

Application	Abreviews	Notes
WB		1/500 - 1/2000.
IHC-P		Use a concentration of 10 µg/ml. Perform heat mediated antigen retrieval before commencing with IHC staining protocol.
Flow Cyt		1/100.
ICC/IF		1/100.

Target

Function	Carries out a dual function: signal transduction and activation of transcription. Binds to the GAS element and activates PRL-induced transcription.
Sequence similarities	Belongs to the transcription factor STAT family. Contains 1 SH2 domain.
Post-translational modifications	Tyrosine phosphorylated in response to IL-2, IL-3, IL-7, IL-15, GM-CSF, growth hormone, prolactin, erythropoietin and thrombopoietin. Tyrosine phosphorylation is required for DNA-binding activity and dimerization. Serine phosphorylation is also required for maximal transcriptional activity.
Cellular localization	Cytoplasm. Nucleus. Translocated into the nucleus in response to phosphorylation.

Images



Western blot - Anti-STAT5 antibody [9F7]
(ab230670)

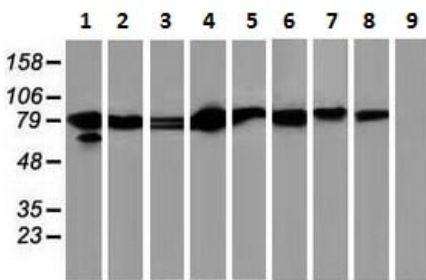
All lanes : Anti-STAT5 antibody [9F7] (ab230670) at 1/500 dilution

Lane 1 : Untransfected HEK-293T (human epithelial cell line from embryonic kidney transformed with large T antigen) cell lysate

Lane 2 : STAT5-transfected HEK-293T cell lysate

Lysates/proteins at 5 µg per lane.

Developed using the ECL technique.



Western blot - Anti-STAT5 antibody [9F7]
(ab230670)

All lanes : Anti-STAT5 antibody [9F7] (ab230670) at 1/500 dilution

Lane 1 : HepG2 (human liver hepatocellular carcinoma cell line) cell extract

Lane 2 : HeLa (human epithelial cell line from cervix adenocarcinoma) cell extract

Lane 3 : SVT2 cell extract

Lane 4 : A549 (human lung carcinoma cell line) cell extract

Lane 5 : COS-7 (African green monkey kidney fibroblast-like cell line) cell extract

Lane 6 : Jurkat (human T cell leukemia cell line from peripheral blood) cell extract

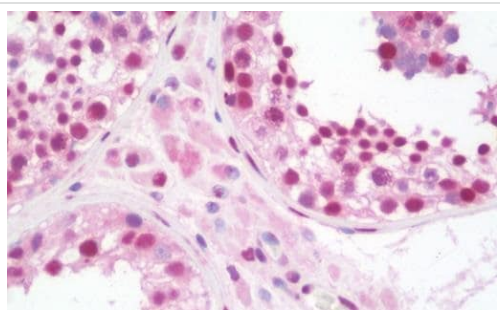
Lane 7 : MDCK (canine kidney cell line) cell extract

Lane 8 : PC-12 (rat adrenal gland pheochromocytoma cell line) cell extract

Lane 9 : MCF7 (human breast adenocarcinoma cell line) cell extract

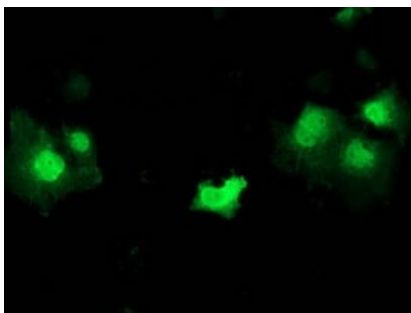
Lysates/proteins at 35 µg per lane.

Developed using the ECL technique.



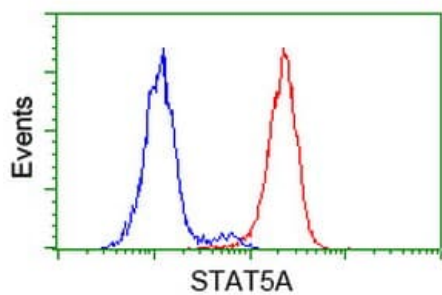
Formalin-fixed, paraffin-embedded human testis tissue stained for STAT5 with ab230670 at 10 µg/ml in immunohistochemical analysis.

Immunohistochemistry (Formalin/PFA-fixed paraffin-embedded sections) - Anti-STAT5 antibody [9F7] (ab230670)



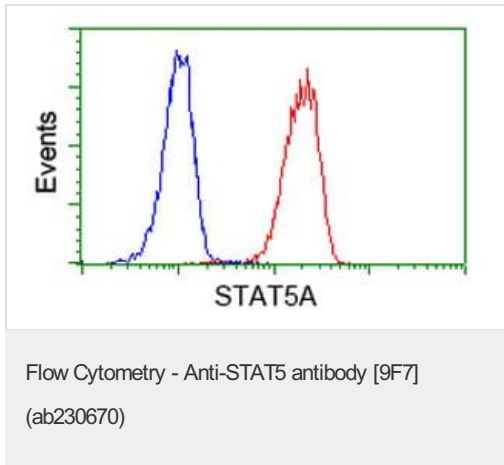
COS-7 (African green monkey kidney fibroblast-like cell line) cells transiently transfected with STAT5 and stained for STAT5 (green) using ab230670 at 1/100 dilution.

Immunocytochemistry/ Immunofluorescence - Anti-STAT5 antibody [9F7] (ab230670)



Flow cytometric analysis of HeLa (human epithelial cell line from cervix adenocarcinoma) cells labeling STAT5 with ab230670 at 1/100 dilution (red) compared with a negative control (blue).

Flow Cytometry - Anti-STAT5 antibody [9F7] (ab230670)



Flow cytometric analysis of Jurkat (human T cell leukemia cell line from peripheral blood) cells labeling STAT% with ab230670 at 1/100 dilution (red) compared with a negative control (blue).

Please note: All products are "FOR RESEARCH USE ONLY. NOT FOR USE IN DIAGNOSTIC PROCEDURES"

Our Abpromise to you: Quality guaranteed and expert technical support

- Replacement or refund for products not performing as stated on the datasheet
- Valid for 12 months from date of delivery
- Response to your inquiry within 24 hours
- We provide support in Chinese, English, French, German, Japanese and Spanish
- Extensive multi-media technical resources to help you
- We investigate all quality concerns to ensure our products perform to the highest standards

If the product does not perform as described on this datasheet, we will offer a refund or replacement. For full details of the Abpromise, please visit <https://www.abcam.com/abpromise> or contact our technical team.

Terms and conditions

- Guarantee only valid for products bought direct from Abcam or one of our authorized distributors