


Product datasheet

Anti-STAT5 antibody ab16276

11 References 2 Images

Overview

Product name	Anti-STAT5 antibody
Description	Rabbit polyclonal to STAT5
Host species	Rabbit
Specificity	This antibody does not cross react with any other STATs or related proteins
Tested applications	Suitable for: ICC/IF, WB
Species reactivity	Reacts with: Mouse, Rat, Human Predicted to work with: Sheep, Cow 
Immunogen	Synthetic peptide: ATIISEQQAKSLLKNENTR , corresponding to amino acids 371-389 of Human STAT5. Run BLAST with Run BLAST with
Positive control	CTLL cell lysate.

Properties

Form	Liquid
Storage instructions	Shipped at 4°C. Upon delivery aliquot and store at -20°C. Avoid freeze / thaw cycles.
Storage buffer	pH: 7.3 Preservative: 0.05% Sodium azide Constituents: PBS, 0.1% BSA PBS is Magnesium and Calcium free
Purity	Immunogen affinity purified
Clonality	Polyclonal
Isotype	IgG

Applications

Our [Abpromise guarantee](#) covers the use of **ab16276** in the following tested applications.

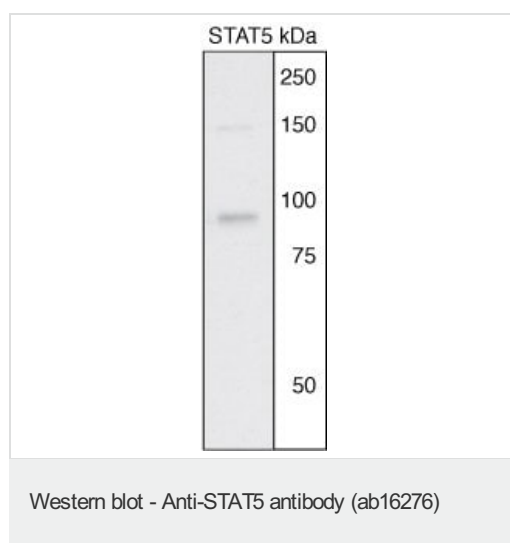
The application notes include recommended starting dilutions; optimal dilutions/concentrations should be determined by the end user.

Application	Abreviews	Notes
ICC/IF		Use a concentration of 1 µg/ml.
WB		Use a concentration of 1 µg/ml. Predicted molecular weight: 90 kDa. Detects bands of approximately 92 kDa and 85 kDa representing STAT5a and STAT5b respectively from CTLL cell lysate.

Target

Function	Carries out a dual function: signal transduction and activation of transcription. Binds to the GAS element and activates PRL-induced transcription.
Sequence similarities	Belongs to the transcription factor STAT family. Contains 1 SH2 domain.
Post-translational modifications	Tyrosine phosphorylated in response to IL-2, IL-3, IL-7, IL-15, GM-CSF, growth hormone, prolactin, erythropoietin and thrombopoietin. Tyrosine phosphorylation is required for DNA-binding activity and dimerization. Serine phosphorylation is also required for maximal transcriptional activity.
Cellular localization	Cytoplasm. Nucleus. Translocated into the nucleus in response to phosphorylation.

Images

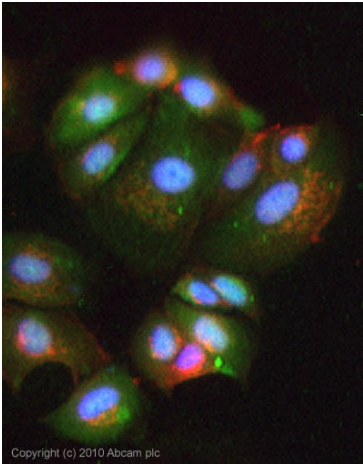


Anti-STAT5 antibody (ab16276) + SK-BR-3 Human adenocarcinoma cell line

Secondary

HRP conjugated goat anti-rabbit

Predicted band size: 90 kDa



Copyright (c) 2010 Abcam plc

Immunocytochemistry/ Immunofluorescence - Anti-STAT5 antibody (ab16276)

ICC/IF image of [ab71498](#) stained MCF7 cells. The cells were 4% PFA fixed (10 min) and then incubated in 1%BSA / 10% normal goat serum / 0.3M glycine in 0.1% PBS-Tween for 1h to permeabilise the cells and block non-specific protein-protein interactions. The cells were then incubated with the antibody (ab16276, 1µg/ml) overnight at +4°C. The secondary antibody (green) was Alexa Fluor® 488 goat anti-rabbit IgG (H+L) used at a 1/1000 dilution for 1h. Alexa Fluor® 594 WGA was used to label plasma membranes (red) at a 1/200 dilution for 1h. DAPI was used to stain the cell nuclei (blue) at a concentration of 1.43µM.

Please note: All products are "FOR RESEARCH USE ONLY. NOT FOR USE IN DIAGNOSTIC PROCEDURES"

Our Abpromise to you: Quality guaranteed and expert technical support

- Replacement or refund for products not performing as stated on the datasheet
- Valid for 12 months from date of delivery
- Response to your inquiry within 24 hours

- We provide support in Chinese, English, French, German, Japanese and Spanish
- Extensive multi-media technical resources to help you
- We investigate all quality concerns to ensure our products perform to the highest standards

If the product does not perform as described on this datasheet, we will offer a refund or replacement. For full details of the Abpromise, please visit <https://www.abcam.com/abpromise> or contact our technical team.

Terms and conditions

- Guarantee only valid for products bought direct from Abcam or one of our authorized distributors