


Product datasheet

Anti-STAT5α (phospho S780) antibody ab30649

1 References 4 Images

Overview

Product name	Anti-STAT5a (phospho S780) antibody
Description	Rabbit polyclonal to STAT5a (phospho S780)
Host species	Rabbit
Tested applications	Suitable for: ICC/IF, WB, IHC-P
Species reactivity	Reacts with: Human Predicted to work with: Mouse, Rat 
Immunogen	Synthetic peptide corresponding to Human STAT5a (phospho S780). Database link: P42229
Positive control	IHC: human breast carcinoma. WB: Jurkat treated with 125 ng/mL PMA for 30 minutes lysate. 293T treated with 125 ng/mL PMA for 30 minutes lysate. ICC/IF: HeLa cells.
General notes	<p>The Life Science industry has been in the grips of a reproducibility crisis for a number of years. Abcam is leading the way in addressing this with our range of recombinant monoclonal antibodies and knockout edited cell lines for gold-standard validation. Please check that this product meets your needs before purchasing.</p> <p>If you have any questions, special requirements or concerns, please send us an inquiry and/or contact our Support team ahead of purchase. Recommended alternatives for this product can be found below, along with publications, customer reviews and Q&As</p>

Properties

Form	Liquid
Storage instructions	Shipped at 4°C. Upon delivery aliquot and store at -20°C. Avoid freeze / thaw cycles.
Storage buffer	pH: 7.40 Preservative: 0.02% Sodium azide Constituents: PBS, 50% Glycerol (glycerin, glycerine), 0.87% Sodium chloride Without Mg ²⁺ and Ca ²⁺
Purity	Immunogen affinity purified
Purification notes	ab30649 was affinity-purified from rabbit antiserum by affinity-chromatography using epitope-specific phosphopeptide. The antibody against non-phosphopeptide was removed by chromatography using non-phosphopeptide corresponding to the phosphorylation site

Clonality	Polyclonal
Isotype	IgG

Applications

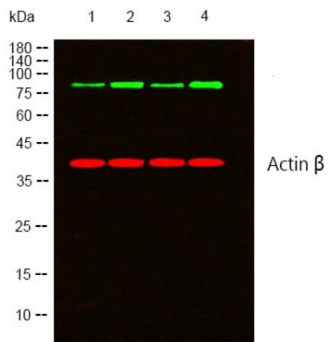
The Abpromise guarantee Our [Abpromise guarantee](#) covers the use of ab30649 in the following tested applications. The application notes include recommended starting dilutions; optimal dilutions/concentrations should be determined by the end user.

Application	Abreviews	Notes
ICC/IF		Use a concentration of 1 µg/ml.
WB		1/500 - 1/1000. Detects a band of approximately 91 kDa (predicted molecular weight: 91 kDa).
IHC-P		1/50 - 1/100.

Target

Function	Carries out a dual function: signal transduction and activation of transcription. Binds to the GAS element and activates PRL-induced transcription.
Sequence similarities	Belongs to the transcription factor STAT family. Contains 1 SH2 domain.
Post-translational modifications	Tyrosine phosphorylated in response to IL-2, IL-3, IL-7, IL-15, GM-CSF, growth hormone, prolactin, erythropoietin and thrombopoietin. Tyrosine phosphorylation is required for DNA-binding activity and dimerization. Serine phosphorylation is also required for maximal transcriptional activity.
Cellular localization	Cytoplasm. Nucleus. Translocated into the nucleus in response to phosphorylation.

Images



Western blot - Anti-STAT5a (phospho S780) antibody (ab30649)

All lanes : Anti-STAT5a (phospho S780) antibody (ab30649) at 1/1000 dilution

Lane 1 : Jurkat untreated lysate

Lane 2 : Jurkat treated with 125 ng/mL PMA for 30 minutes lysate

Lane 3 : 293T untreated lysate

Lane 4 : 293T treated with 125 ng/mL PMA for 30 minutes lysate

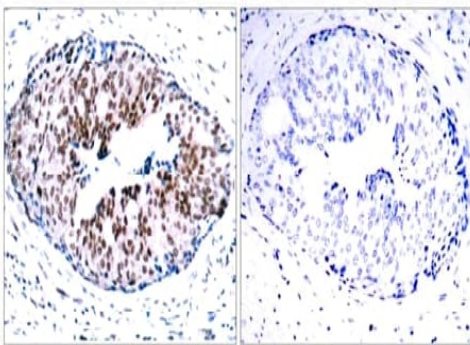
Lysates/proteins at 20 µg per lane.

Secondary

All lanes : Goat Anti-Rabbit IgG (H+L) HRP at 1/10000 dilution

Predicted band size: 91 kDa

Loading control: beta Actin.

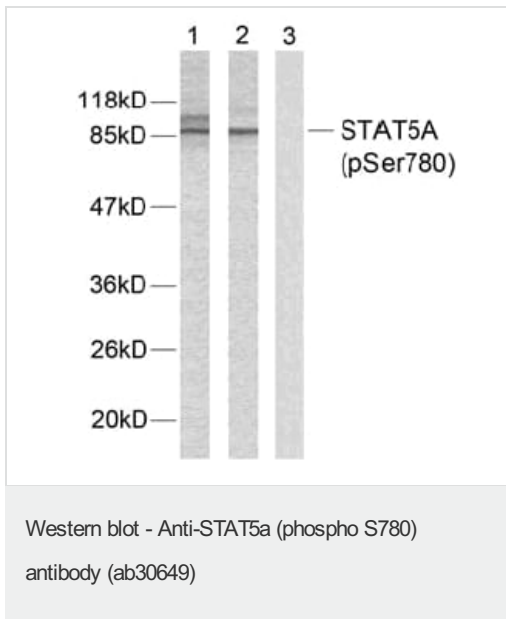


Immunohistochemistry (Formalin/PFA-fixed paraffin-embedded sections) - Anti-STAT5a (phospho S780) antibody (ab30649)

Immunohistochemistry analysis of paraffin-embedded human breast carcinoma, using ab30649. The picture on the right is blocked with the phospho peptide.

Immunocytochemistry/ Immunofluorescence - Anti-STAT5a (phospho S780) antibody (ab30649)

ICC/IF image of ab30649 stained HeLa cells. The cells were 100% methanol fixed (5 min) and then incubated in 1%BSA / 10% normal goat serum / 0.3M glycine in 0.1% PBS-Tween for 1h to permeabilise the cells and block non-specific protein-protein interactions. The cells were then incubated with the antibody (ab30649, 1µg/ml) overnight at +4°C. The secondary antibody (green) was Alexa Fluor® 488 goat anti-rabbit IgG (H+L) used at a 1/1000 dilution for 1h. Alexa Fluor® 594 WGA was used to label plasma membranes (red) at a 1/200 dilution for 1h. DAPI was used to stain the cell nuclei (blue) at a concentration of 1.43µM.



All lanes : Anti-STAT5a (phospho S780) antibody (ab30649)

Lane 1 : HeLa cells extract

Lane 2 : HeLa cells extract with synthesized non-phosphopeptide

Lane 3 : HeLa cells extract with synthesized phosphopeptide

Predicted band size: 91 kDa

Observed band size: 91 kDa

Please note: All products are "FOR RESEARCH USE ONLY. NOT FOR USE IN DIAGNOSTIC PROCEDURES"

Our Abpromise to you: Quality guaranteed and expert technical support

- Replacement or refund for products not performing as stated on the datasheet
- Valid for 12 months from date of delivery
- Response to your inquiry within 24 hours
- We provide support in Chinese, English, French, German, Japanese and Spanish
- Extensive multi-media technical resources to help you
- We investigate all quality concerns to ensure our products perform to the highest standards

If the product does not perform as described on this datasheet, we will offer a refund or replacement. For full details of the Abpromise, please visit <https://www.abcam.com/abpromise> or contact our technical team.

Terms and conditions

- Guarantee only valid for products bought direct from Abcam or one of our authorized distributors