

## Product datasheet

# Anti-STAT6 antibody ab88540

[1 References](#) [3 Images](#)

### Overview

---

|                            |   |
|----------------------------|---|
| <b>Product name</b>        | Anti-STAT6 antibody   |
| <b>Description</b>         | Mouse polyclonal to STAT6   |
| <b>Host species</b>        | Mouse   |
| <b>Tested applications</b> | <b>Suitable for:</b> WB, ICC/IF   |
| <b>Species reactivity</b>  | <b>Reacts with:</b> Human   |
| <b>Immunogen</b>           | Full length Human STAT6 (NP_003144.3)   |
| <b>Positive control</b>    | Human pancreas tissue lysate, STAT6 transfected 293T cell lysate and HeLa cells.  |
| <b>General notes</b>       | <p>Reproducibility is key to advancing scientific discovery and accelerating scientists' next breakthrough.</p> <p>Abcam is leading the way with our range of recombinant antibodies, knockout-validated antibodies and knockout cell lines, all of which support improved reproducibility.</p> <p>We are also planning to innovate the way in which we present recommended applications and species on our product datasheets, so that only applications &amp; species that have been tested in our own labs, our suppliers or by selected trusted collaborators are covered by our Abpromise™ guarantee.</p> <p>In preparation for this, we have started to update the applications &amp; species that this product is Abpromise guaranteed for.</p> <p>We are also updating the applications &amp; species that this product has been “predicted to work with,” however this information is not covered by our Abpromise guarantee.</p> <p>Applications &amp; species from publications and Abreviews that have not been tested in our own labs or in those of our suppliers are not covered by the Abpromise guarantee.</p> <p>Please check that this product meets your needs before purchasing. If you have any questions, special requirements or concerns, please send us an inquiry and/or contact our Support team ahead of purchase. Recommended alternatives for this product can be found below, as well as customer reviews and Q&amp;As.</p> |

### Properties

---

|                             |   |
|-----------------------------|---|
| <b>Form</b>                 | Liquid  |
| <b>Storage instructions</b> | Shipped at 4°C. Upon delivery aliquot and store at -20°C or -80°C. Avoid repeated freeze / thaw cycles. |

|                       |                                   |
|-----------------------|-----------------------------------|
| <b>Storage buffer</b> | pH: 7.4<br>Constituent: 2.68% PBS |
| <b>Purity</b>         | Protein A purified                |
| <b>Clonality</b>      | Polyclonal                        |
| <b>Isotype</b>        | IgG                               |

## Applications

Our [Abpromise guarantee](#) covers the use of **ab88540** in the following tested applications.

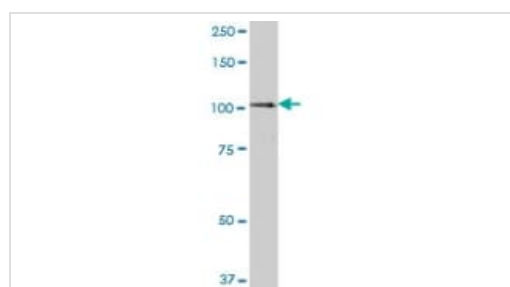
The application notes include recommended starting dilutions; optimal dilutions/concentrations should be determined by the end user.

| Application | Abreviews | Notes   |
|-------------|-----------|---|
| WB          |           | Use a concentration of 1 µg/ml. Predicted molecular weight: 94 kDa. |
| ICC/IF      |           | Use a concentration of 10 µg/ml.                                    |

## Target

|   |   |
|---|---|
| <b>Function</b>                         | Carries out a dual function: signal transduction and activation of transcription. Involved in interleukin-4 signalling. |
| <b>Sequence similarities</b>            | Belongs to the transcription factor STAT family.<br>Contains 1 SH2 domain.  |
| <b>Post-translational modifications</b> | Tyrosine phosphorylated following stimulation by IL-4 and IL-3.   |
| <b>Cellular localization</b>            | Cytoplasm. Nucleus. Translocated into the nucleus in response to phosphorylation.                                       |

## Images



Western blot - Anti-STAT6 antibody (ab88540)

Anti-STAT6 antibody (ab88540) at 1 µg/ml + Human pancreas tissue lysate at 50 µg

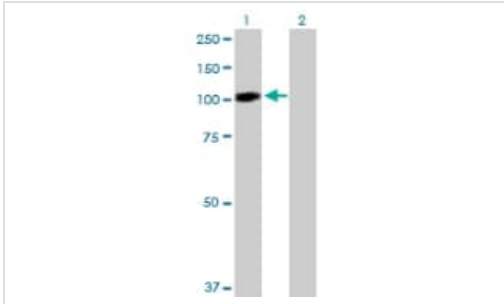
### Secondary

Goat Anti-Mouse IgG (H&L)-HRP Conjugate secondary antibody at 1/2500 dilution

**Predicted band size:** 94 kDa

**Observed band size:** 100 kDa

[why is the actual band size different from the predicted?](#)



Western blot - Anti-STAT6 antibody (ab88540)

**All lanes** : Anti-STAT6 antibody (ab88540) at 1 µg/ml

**Lane 1** : STAT6 transfected 293T cell lysate

**Lane 2** : Non-transfected 293T cell lysate

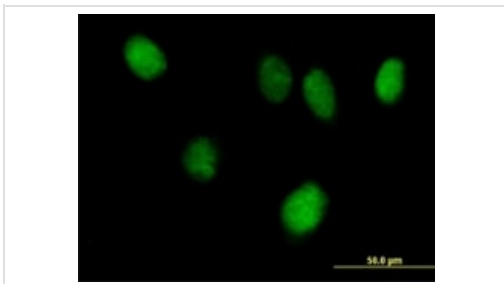
Lysates/proteins at 50 µg per lane.

**Secondary**

**All lanes** : Goat Anti-Mouse IgG (H&L)-HRP Conjugate at 1/2500 dilution

**Predicted band size:** 94 kDa

**Observed band size:** 100 kDa [why is the actual band size different from the predicted?](#)



Immunocytochemistry/ Immunofluorescence - Anti-STAT6 antibody (ab88540)

Immunofluorescence of ab88540 on HeLa cell with antibody concentration at 10 µg/ml

**Please note:** All products are "FOR RESEARCH USE ONLY. NOT FOR USE IN DIAGNOSTIC PROCEDURES"

**Our Abpromise to you: Quality guaranteed and expert technical support**

- Replacement or refund for products not performing as stated on the datasheet
- Valid for 12 months from date of delivery
- Response to your inquiry within 24 hours
- We provide support in Chinese, English, French, German, Japanese and Spanish
- Extensive multi-media technical resources to help you
- We investigate all quality concerns to ensure our products perform to the highest standards

If the product does not perform as described on this datasheet, we will offer a refund or replacement. For full details of the Abpromise, please visit <https://www.abcam.com/abpromise> or contact our technical team.

## Terms and conditions

---

- Guarantee only valid for products bought direct from Abcam or one of our authorized distributors