


Product datasheet

Anti-Staufen/STAU1 antibody - C-terminal ab228610

2 Images

Overview

Product name	Anti-Staufen/STAU1 antibody - C-terminal
Description	Rabbit polyclonal to Staufen/STAU1 - C-terminal
Host species	Rabbit
Tested applications	Suitable for: WB
Species reactivity	Reacts with: Mouse, Human Predicted to work with: Rat, Chicken, Rhesus monkey 
Immunogen	Recombinant fragment within Human Staufen/STAU1 (C terminal). The exact sequence is proprietary. Database link: O95793
Positive control	WB: Neuro-2a and HepG2 whole cell lysates.
General notes	This product was previously labelled as Staufen

Properties

Form	Liquid
Storage instructions	Shipped at 4°C. Store at +4°C short term (1-2 weeks). Upon delivery aliquot. Store at -20°C long term. Avoid freeze / thaw cycle.
Storage buffer	pH: 7.00 Preservative: 0.01% Thimerosal (merthiolate) Constituents: 1.21% Tris, 0.75% Glycine, 20% Glycerol
Purity	Immunogen affinity purified
Clonality	Polyclonal
Isotype	IgG

Applications

Our [Abpromise guarantee](#) covers the use of **ab228610** in the following tested applications.

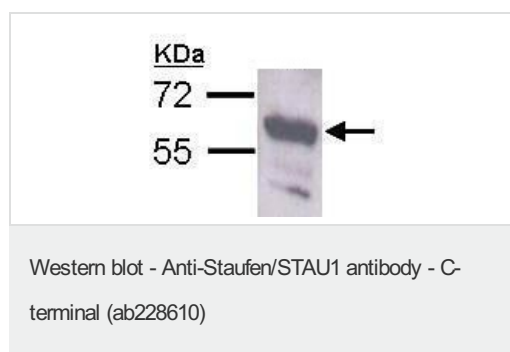
The application notes include recommended starting dilutions; optimal dilutions/concentrations should be determined by the end user.

Application	Abreviews	Notes
WB		1/500 - 1/3000. Predicted molecular weight: 63 kDa.

Target

Function	Binds double-stranded RNA (regardless of the sequence) and tubulin. May play a role in specific positioning of mRNAs at given sites in the cell by cross-linking cytoskeletal and RNA components, and in stimulating their translation at the site.
Tissue specificity	Widely expressed. Expressed in brain, pancreas, heart, skeletal muscles, liver, lung, kidney and placenta.
Sequence similarities	Contains 3 DRBM (double-stranded RNA-binding) domains.
Domain	One of the DRDB could be involved in RER binding. The C-terminal contains the tubulin binding domain (TBD).
Cellular localization	Cytoplasm. Rough endoplasmic reticulum. Localizes exclusively with the rough reticulum endoplasmic.

Images



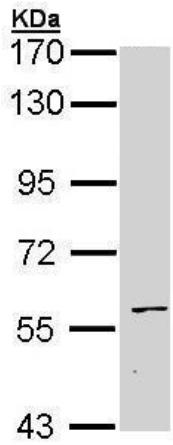
Anti-Staufen/STAU1 antibody - C-terminal (ab228610) at 1/1000 dilution + Neuro-2a (mouse neuroblastoma cell line) whole cell lysate at 30 µg

Secondary

HRP-conjugated anti-rabbit IgG

Developed using the ECL technique.

Predicted band size: 63 kDa



Western blot - Anti-Staufen/STAU1 antibody - C-terminal (ab228610)

Anti-Staufen/STAU1 antibody - C-terminal (ab228610) at 1/5000 dilution + HepG2 (human liver hepatocellular carcinoma cell line) whole cell lysate at 30 µg

Secondary

HRP-conjugated anti-rabbit IgG

Developed using the ECL technique.

Predicted band size: 63 kDa

7.5% SDS-PAGE

Please note: All products are "FOR RESEARCH USE ONLY. NOT FOR USE IN DIAGNOSTIC PROCEDURES"

Our Abpromise to you: Quality guaranteed and expert technical support

- Replacement or refund for products not performing as stated on the datasheet
- Valid for 12 months from date of delivery
- Response to your inquiry within 24 hours
- We provide support in Chinese, English, French, German, Japanese and Spanish
- Extensive multi-media technical resources to help you
- We investigate all quality concerns to ensure our products perform to the highest standards

If the product does not perform as described on this datasheet, we will offer a refund or replacement. For full details of the Abpromise, please visit <https://www.abcam.com/abpromise> or contact our technical team.

Terms and conditions

- Guarantee only valid for products bought direct from Abcam or one of our authorized distributors