

Product datasheet

STEAP1 overexpression 293T lysate (whole cell) ab94255

2 Images

Overview

<b>Product name</b>	STEAP1 overexpression 293T lysate (whole cell)
<b>General notes</b>	ab94255 is a 293T cell transfected lysate in which Human STEAP1 has been transiently over-expressed using a pCMV-STEAP1 plasmid. The lysate is provided in 1X Sample Buffer. <b>Note:</b> For more details about how the transfected lysate was prepared <a href="#">view preparation notes</a>
<b>Tested applications</b>	<b>Suitable for:</b> WB

Properties

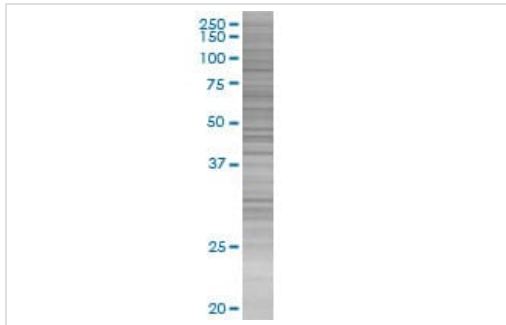
<b>Mycoplasma free</b>	Yes
<b>Form</b>	Liquid
<b>Storage instructions</b>	Shipped on dry ice. Upon delivery aliquot and store at -20°C. Avoid freeze / thaw cycles.
<b>Storage buffer</b>	Constituents: 0.01% Bromophenol blue, 2.3% Beta mercaptoethanol, 2% Sodium lauryl sulfate, 0.788% Tris HCl, 10% Glycerol (glycerin, glycerine)
<b>Background</b>	Function: Metalloreductase that has the ability to reduce both Fe(3+) to Fe(2+) and Cu(2+) to Cu(1+). Uses NAD(+) as acceptor. Tissue specificity: Ubiquitously expressed. Highly expressed in prostate tumors. Similarity: Belongs to the STEAP family. Contains 1 ferric oxidoreductase domain.

Applications

**The Abpromise guarantee** Our [Abpromise guarantee](#) covers the use of ab94255 in the following tested applications. The application notes include recommended starting dilutions; optimal dilutions/concentrations should be determined by the end user.

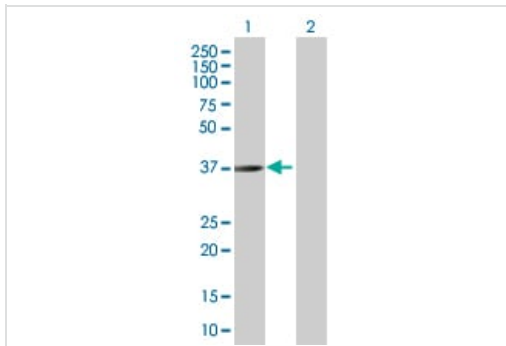
Application	Abreviews	Notes
WB		Use at an assay dependent dilution.

Images



SDS-PAGE - STEAP1 overexpression 293T lysate  
(whole cell) (ab94255)

ab94255 at 15µg/lane on an SDS-PAGE gel



Western blot - STEAP1 overexpression 293T lysate  
(whole cell) (ab94255)

**All lanes** : Anti-STEAP1 antibody (ab57147) at 1/500 dilution

**Lane 1** : STEAP1 overexpression 293T lysate (whole cell)  
(ab94255)

**Lane 2** : 293T non-transfected lysate

Lysates/proteins at 25 µg per lane.

#### Secondary

**All lanes** : Goat Anti-mouse IgG (H and L) HRP conjugated at  
1/2500 dilution

**Please note:** All products are "FOR RESEARCH USE ONLY. NOT FOR USE IN DIAGNOSTIC PROCEDURES"

### Our Abpromise to you: Quality guaranteed and expert technical support

- Replacement or refund for products not performing as stated on the datasheet
- Valid for 12 months from date of delivery
- Response to your inquiry within 24 hours
- We provide support in Chinese, English, French, German, Japanese and Spanish
- Extensive multi-media technical resources to help you
- We investigate all quality concerns to ensure our products perform to the highest standards

If the product does not perform as described on this datasheet, we will offer a refund or replacement. For full details of the Abpromise, please visit <https://www.abcam.com/abpromise> or contact our technical team.

### Terms and conditions

- Guarantee only valid for products bought direct from Abcam or one of our authorized distributors