

Product datasheet

Anti-STELLAR antibody ab136278

2 Images

Overview

Product name	Anti-STELLAR antibody
Description	Chicken polyclonal to STELLAR
Host species	Chicken
Tested applications	Suitable for: WB, ICC/IF
Species reactivity	Reacts with: Mouse
Immunogen	Synthetic peptide within Human STELLAR aa 50-150 conjugated to keyhole limpet haemocyanin. The exact sequence is proprietary.
Positive control	In western blot, ab136278 gave a positive signal in the following whole cell lysates: mouse embryonic germ cells; E14Tg2a. This antibody gave a positive result when used in the following methanol fixed cell lines: Mouse embryonic stem cells.
General notes	This product was previously labelled as Stella

Reproducibility is key to advancing scientific discovery and accelerating scientists' next breakthrough.

Abcam is leading the way with our range of recombinant antibodies, knockout-validated antibodies and knockout cell lines, all of which support improved reproducibility.

We are also planning to innovate the way in which we present recommended applications and species on our product datasheets, so that only applications & species that have been tested in our own labs, our suppliers or by selected trusted collaborators are covered by our Abpromise™ guarantee.

In preparation for this, we have started to update the applications & species that this product is Abpromise guaranteed for.

We are also updating the applications & species that this product has been “predicted to work with,” however this information is not covered by our Abpromise guarantee.

Applications & species from publications and Abreviews that have not been tested in our own labs or in those of our suppliers are not covered by the Abpromise guarantee.

Please check that this product meets your needs before purchasing. If you have any questions, special requirements or concerns, please send us an inquiry and/or contact our Support team ahead of purchase. Recommended alternatives for this product can be found below, as well as customer reviews and Q&As.

Properties

Form	Liquid
Storage instructions	Shipped at 4°C. Upon delivery aliquot. Store at -20°C or -80°C. Avoid freeze / thaw cycle.
Storage buffer	pH: 7.40 Preservative: 0.02% Sodium azide Constituents: PBS, 3% BSA
Purity	Immunogen affinity purified
Clonality	Polyclonal
Isotype	IgY

Applications

Our [Abpromise guarantee](#) covers the use of **ab136278** in the following tested applications.

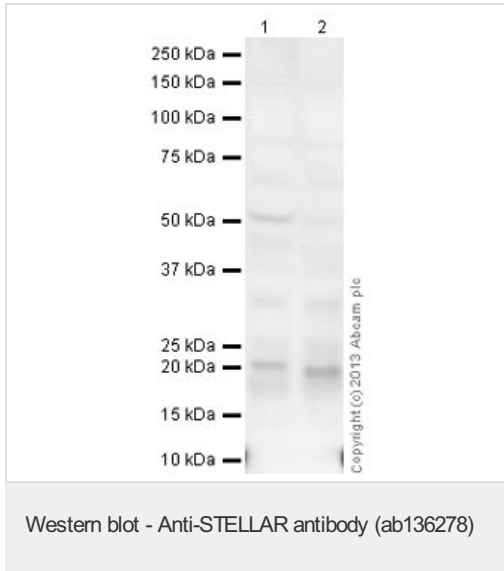
The application notes include recommended starting dilutions; optimal dilutions/concentrations should be determined by the end user.

Application	Abreviews	Notes
WB		Use a concentration of 1 µg/ml. Detects a band of approximately 18 kDa (predicted molecular weight: 18 kDa).
ICC/IF		Use a concentration of 5 µg/ml.

Target

Function	May play a role in maintaining cell pluripotentiality.
Tissue specificity	Low expression in testis, ovary and thymus. Expressed in embryonic stem and carcinoma cells. Highly expressed in testicular germ cell tumors.
Developmental stage	Expressed in fetal ovary.
Cellular localization	Nucleus. Cytoplasm.
Form	Stella is a gene specifically expressed in primordial germ cells, oocytes, preimplantation embryos and pluripotent cells. It encodes a protein with a SAP-like domain and a splicing factor motif-like structure, suggesting possible roles in chromosomal organization or RNA processing. Embryos without Stella are compromised in preimplantation development and rarely reach the blastocyst stage.

Images



All lanes : Anti-STELLAR antibody (ab136278) at 1 µg/ml

Lane 1 : Mouse EG (TMAS Embryonic Germ Cells) Whole Cell Lysate

Lane 2 : Mouse EG (TMAS Embryonic Germ Cells) Whole Cell Lysate (ab59325)

Lysates/proteins at 20 µg per lane.

Secondary

All lanes : Goat Anti-Chicken IgY H&L (HRP) (ab6877) at 1/3000 dilution

Developed using the ECL technique.

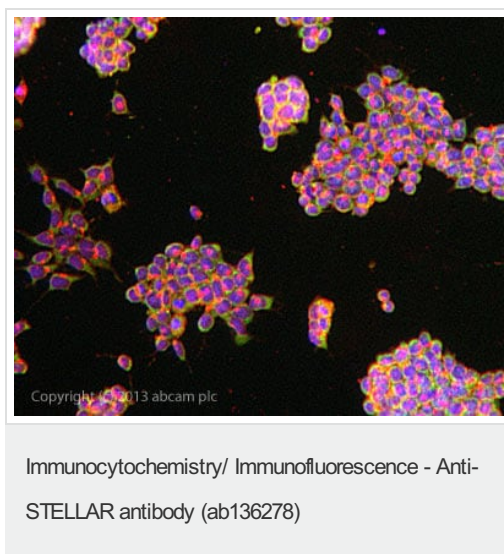
Performed under reducing conditions.

Predicted band size: 18 kDa

Observed band size: 20 kDa

[why is the actual band size different from the predicted?](#)

Exposure time: 1 minute



ab136278 stained Mouse Embryonic Stem cells. The cells were 100% methanol fixed (5 min) and then incubated in 1%BSA / 10% normal goat serum / 0.3M glycine in 0.1% PBS-Tween for 1h to permeabilise the cells and block non-specific protein-protein interactions. The cells were then incubated with the antibody ab136278 at 5µg/ml overnight at +4°C. The secondary antibody (green) was DyLight® 488 goat anti- chicken IgY (H+L) used at a 1/250 dilution for 1h. Alexa Fluor® 594 WGA was used to label plasma membranes (red) at a 1/200 dilution for 1h. DAPI was used to stain the cell nuclei (blue) at a concentration of 1.43µM.

Please note: All products are "FOR RESEARCH USE ONLY. NOT FOR USE IN DIAGNOSTIC PROCEDURES"

Our Abpromise to you: Quality guaranteed and expert technical support

- Replacement or refund for products not performing as stated on the datasheet
- Valid for 12 months from date of delivery
- Response to your inquiry within 24 hours

- We provide support in Chinese, English, French, German, Japanese and Spanish
- Extensive multi-media technical resources to help you
- We investigate all quality concerns to ensure our products perform to the highest standards

If the product does not perform as described on this datasheet, we will offer a refund or replacement. For full details of the Abpromise, please visit <https://www.abcam.com/abpromise> or contact our technical team.

Terms and conditions

- Guarantee only valid for products bought direct from Abcam or one of our authorized distributors